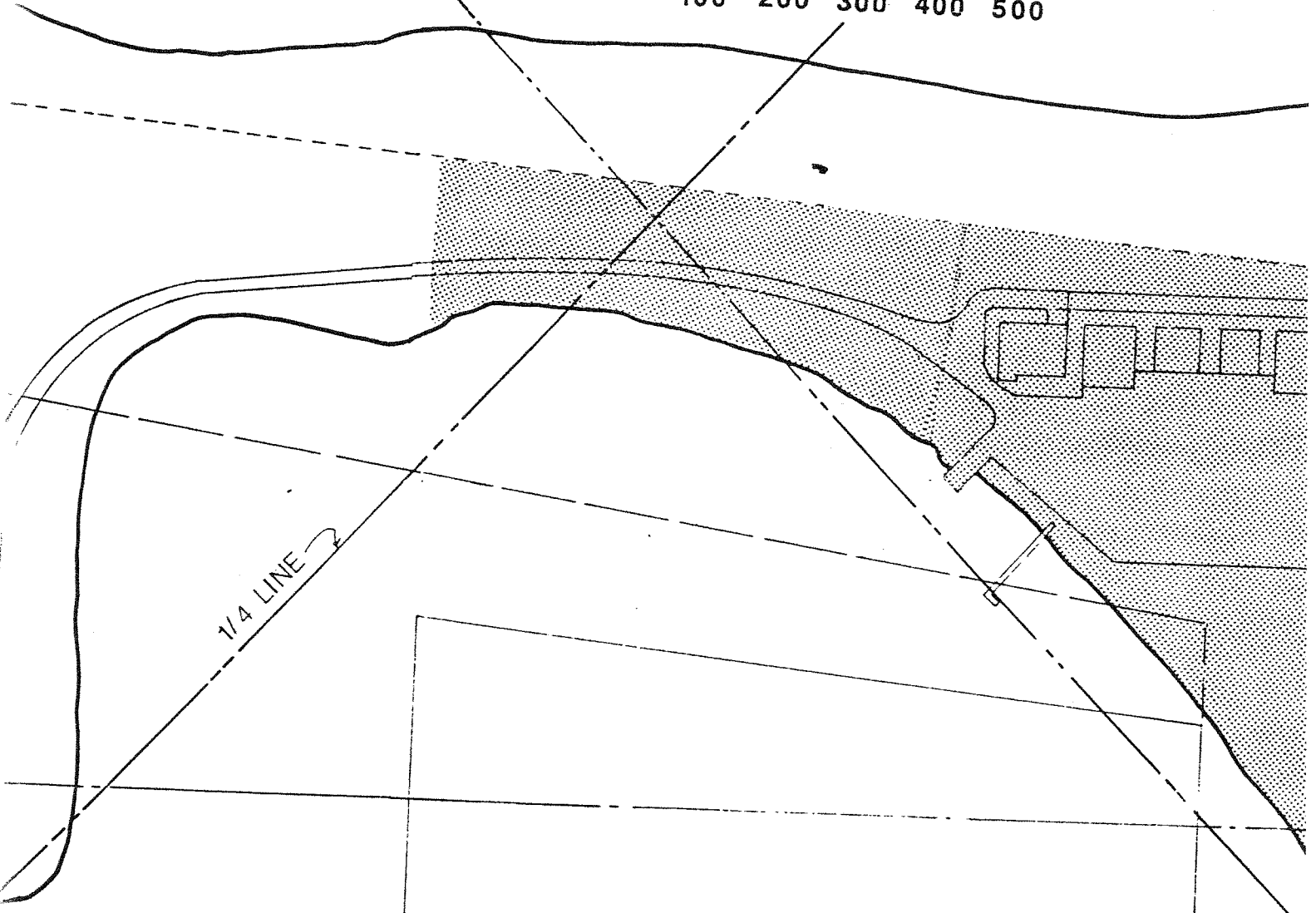
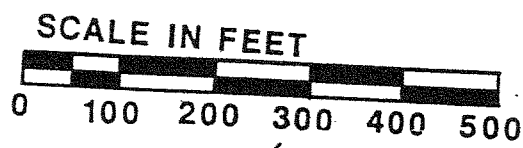
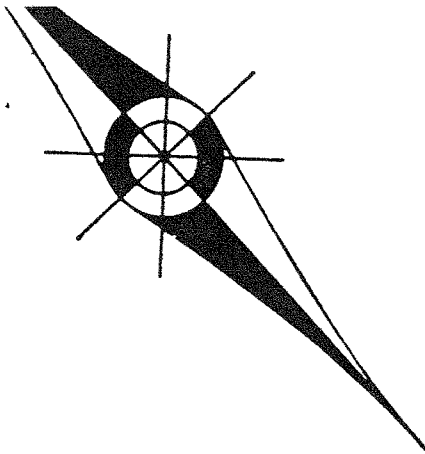


L



1/4 LINE

EXISTING: 250' x 1000' x 450' CLEAR ZONE
20:1 APPROACH SURFACE

ULTIMATE: 500' x 2000' x 1100' CLEAR ZONE
40:1 APPROACH SURFACE

A K E

S

US COAST SURVEY PRIMARY BASE LINE

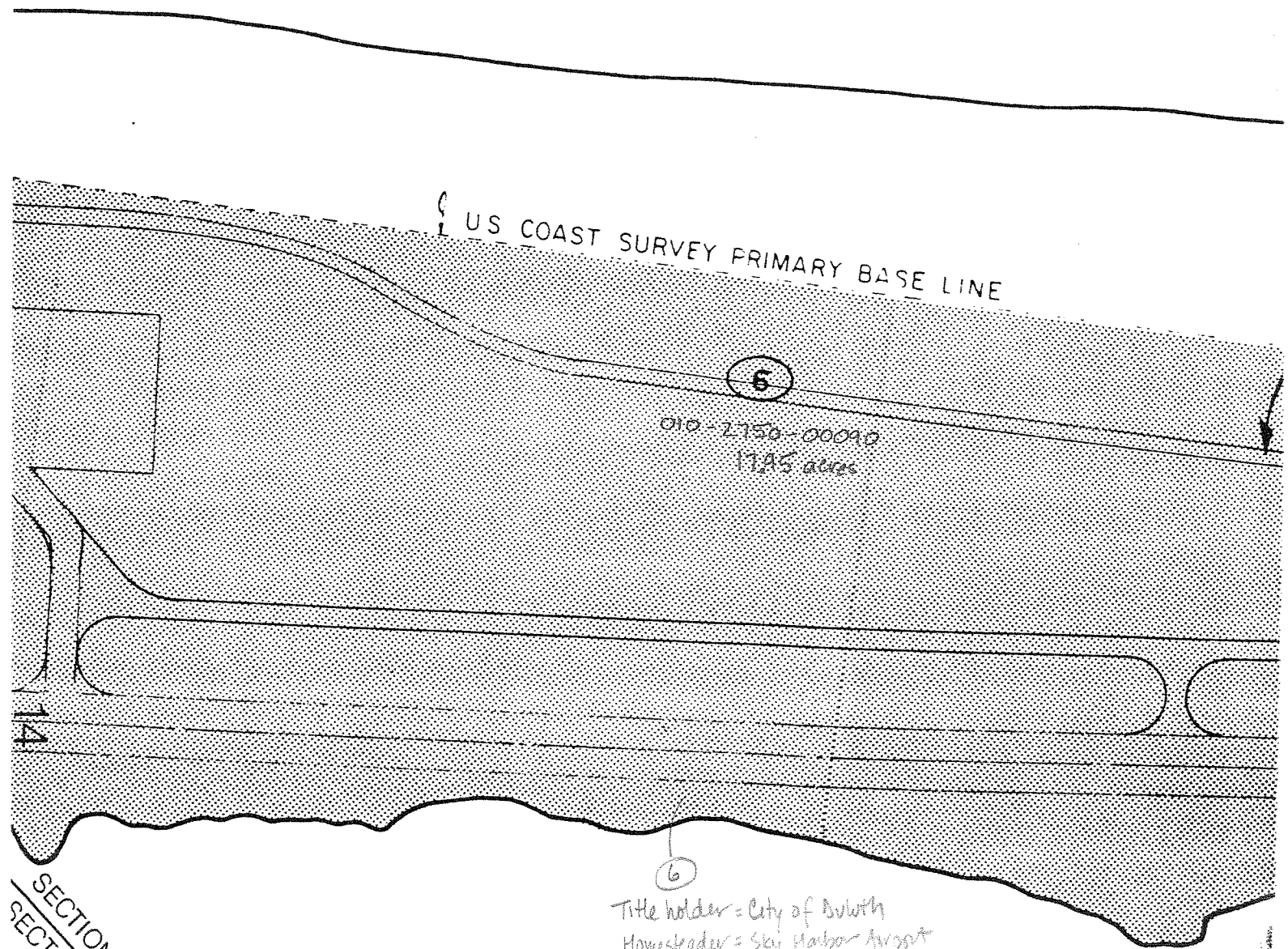
5

010-2750-00090
1725 acres

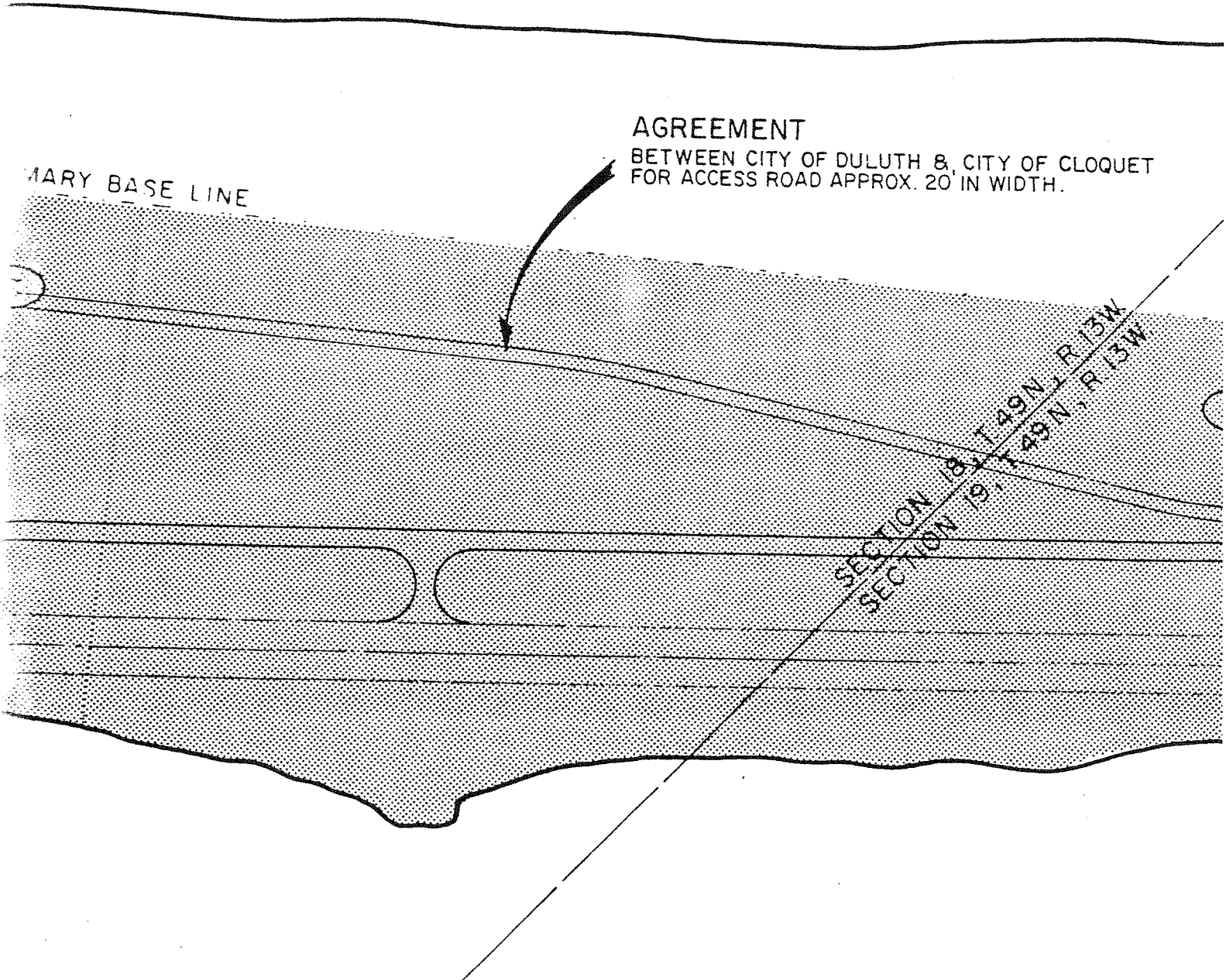
6

Title holder = City of Duluth
Homesteader = Sky Harbor Airport

SECTION 18, T49N, R13W
SECTION 13, T49N, R13W



S U P E R I

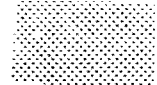


PRIMARY BASE LINE

AGREEMENT
BETWEEN CITY OF DULUTH & CITY OF CLOQUET
FOR ACCESS ROAD APPROX. 20' IN WIDTH.

SECTION 18, T. 49N., R. 13W.
SECTION 19, T. 49N., R. 13W.

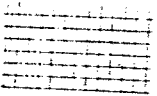
7 R



FEE AIRPORT PROPERTY



EASEMENT (AVIATION)
GRANTED TO CITY OF DULUTH FROM
SUPERIOR WATER, LIGHT & POWER CO.

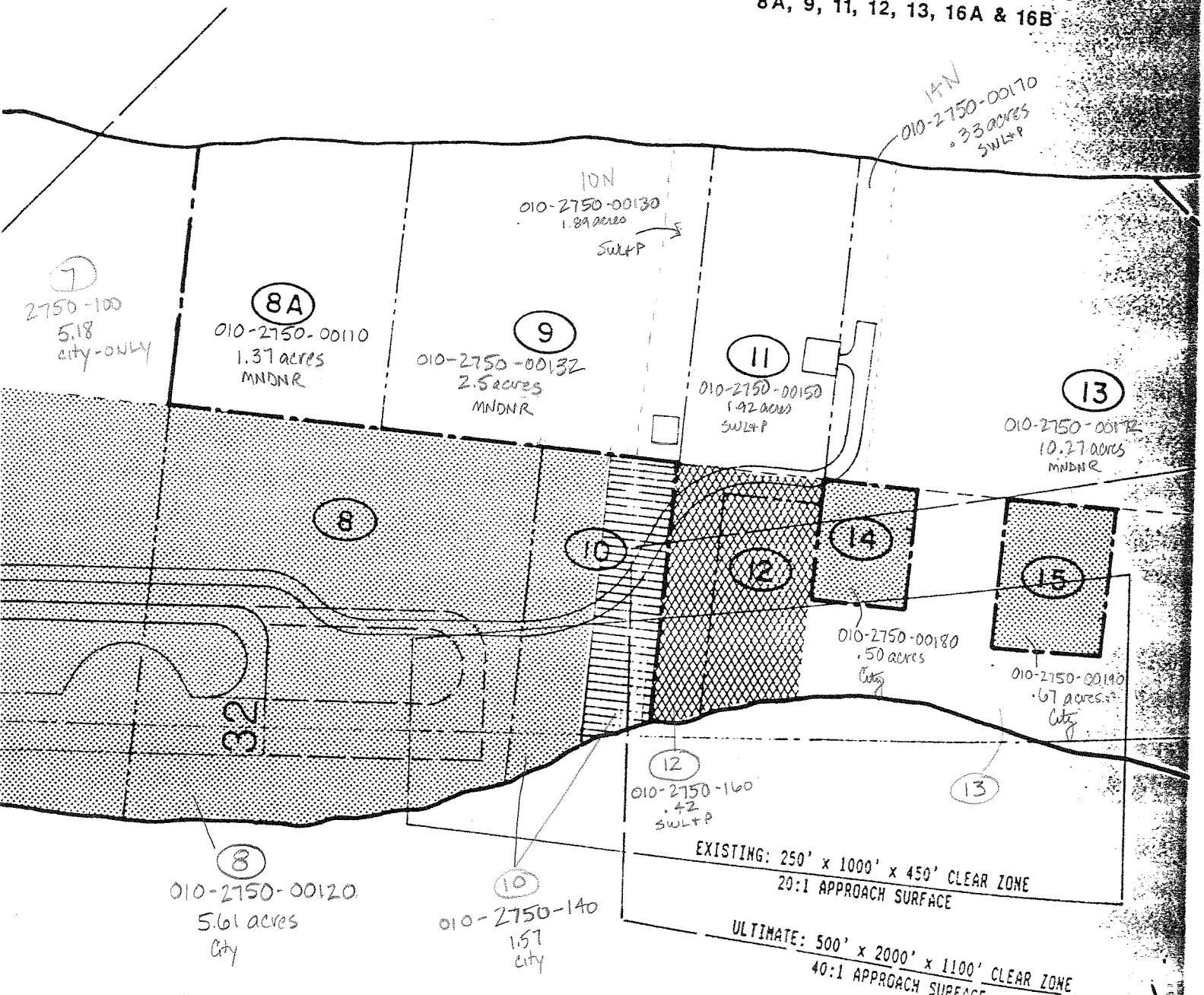


UTILITY EASEMENT
GRANTED TO CITY OF CLOQUET FROM CITY

PROPERTY OWNERSHIP

CITY OF DULUTH, PARCELS 5, 6, 7, 8, 10
15, 16, 17, 18, 19, 20, 21, 22, 23 & 24

CITY OF SUPERIOR, PARCELS
8A, 9, 11, 12, 13, 16A & 16B

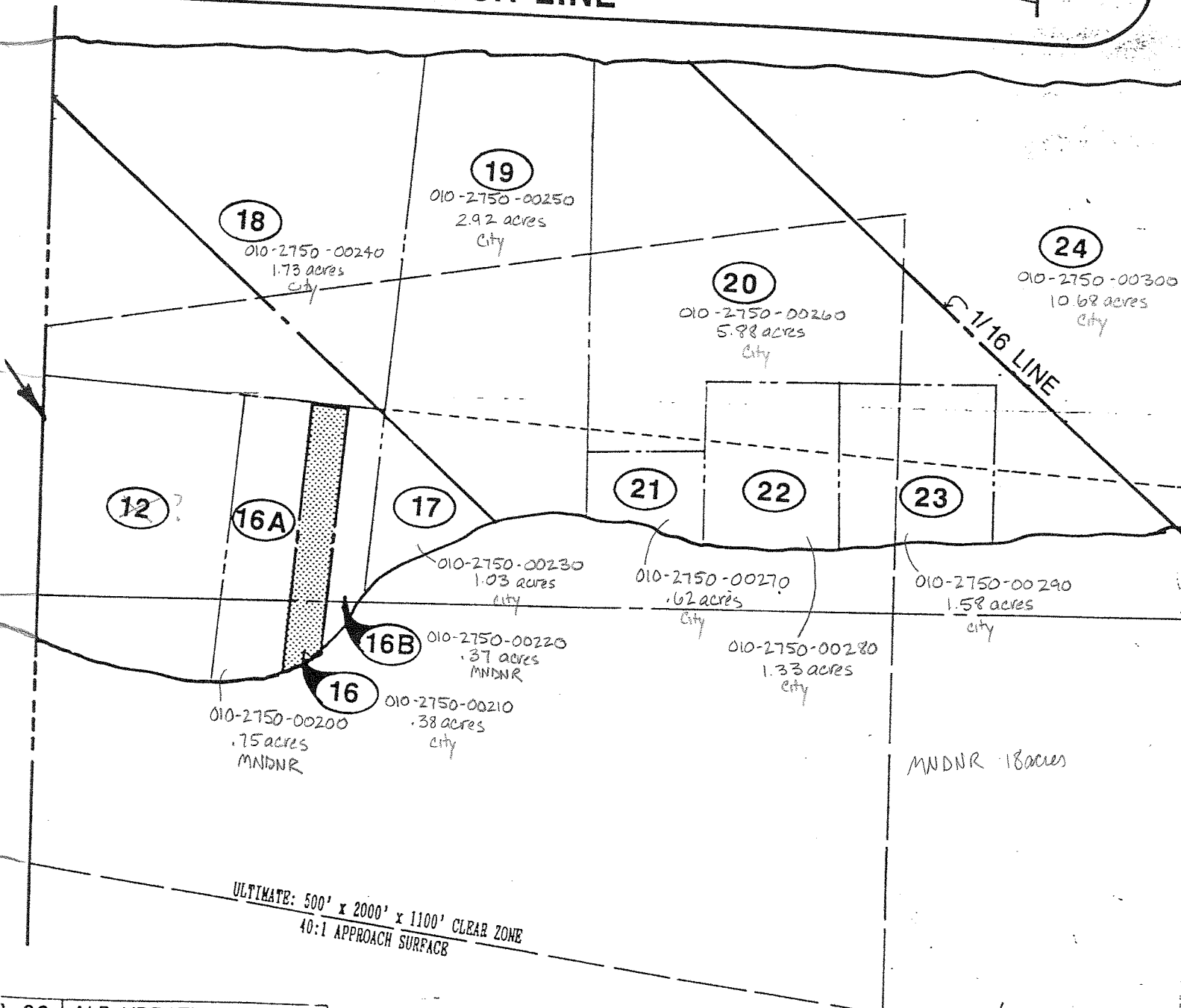


MATCH LINE

EXISTING: 250' x 1000' x 450' CLEAR ZONE
20:1 APPROACH SURFACE

ULTIMATE: 500' x 2000' x 1100' CLEAR ZONE
40:1 APPROACH SURFACE

MATCH LINE



3-89	ALP UPDATE/AS BUILT
7-84	APPROACH SLOPE
3-84	NOTES
-84	PARCELS 5,6 & 7
83	PARCEL 20
83	R/W EXT & TAXIWAY
E	CHANGE
REVISIONS	

SKY HARBOR

Municipal Airport Duluth, Minnesota

PROPERTY MAP & PROFILE

SCALE	DESIGNED:	DRAWN: P.C.D.	
	CHECKED:	DATE 9-24-76	SHEET 4 OF 5

JACK D. SALO, INC.
CONSULTING ENGINEERS