

U. S. OF AMERICA

2750 -

2750-330

SEC 20 46 13

26

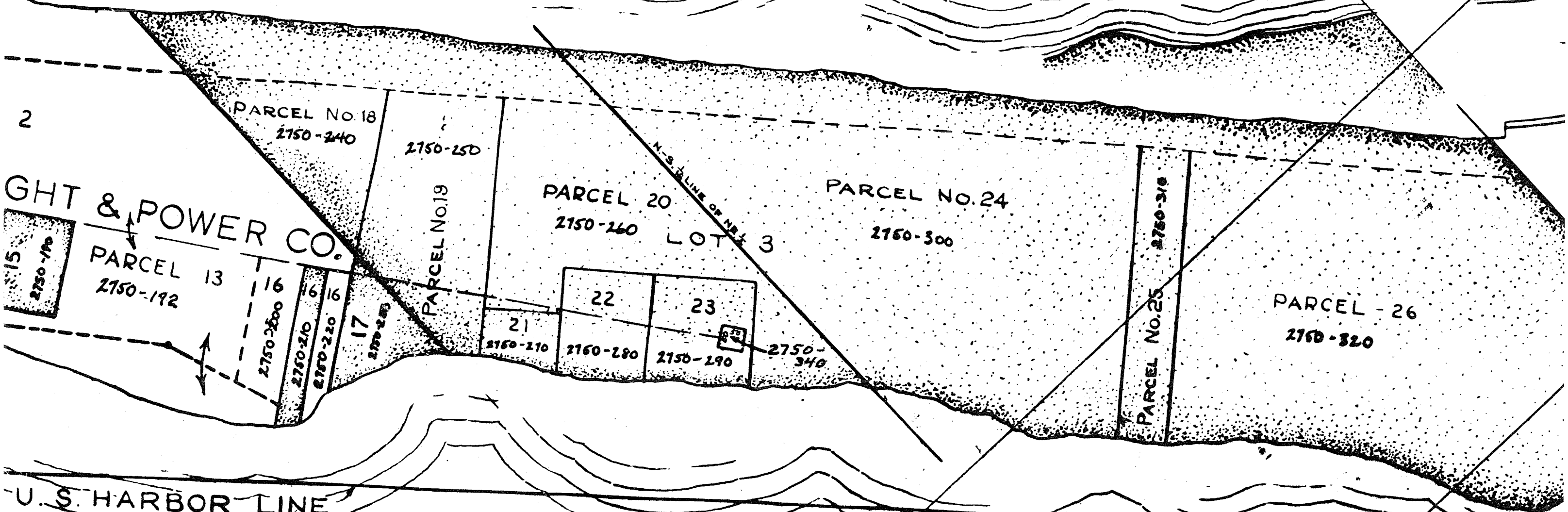
N. 62° 07' 00" W.

STATION

56

MINNESOTA

POINT



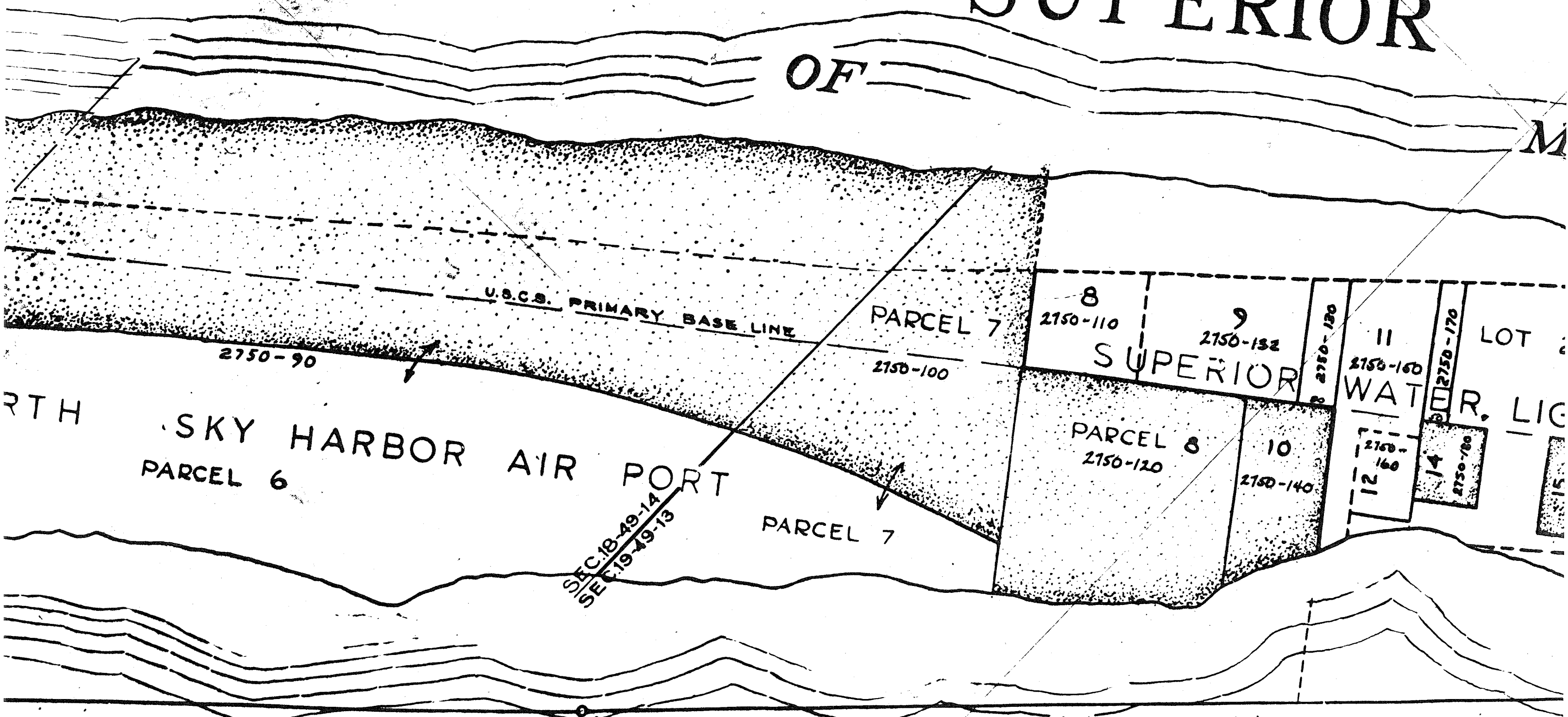
GHT & POWER CO.

U.S. HARBOR LINE

MINNESOTA.
WISCONSIN

SUPERIOR

OF



2750-90

U.S.C.S. PRIMARY BASE LINE

PARCEL 7

2150-100

8
2150-110

9
2150-132

SUPERIOR

2750-130

11
2150-160

WATER

2750-170

LOT

RTH

SKY HARBOR AIR PORT

PARCEL 6

PARCEL 7

PARCEL 8
2150-120

10
2150-140

12
2150-160

14
2150-780

LIG

SEC. 18-49-14
SEC. 19-49-13

Q.P.T. NO. 6

N. 45°-16'-16.5" W. - 5293.52'

BAY

LAIN

PLAT

OF

CITY OF DULUTH

PARCEL 6
2750-90

U.S.C.S. PRIMARY BASE LINE

2750-90

A E h

NORTH

SKY HARBOR AIR PORT
PARCEL 6

PARCEL

*Buildings as
to Wallner v
as persr*

SEC. 18-49-14
SEC. 19-49-13

Pt. No. 6

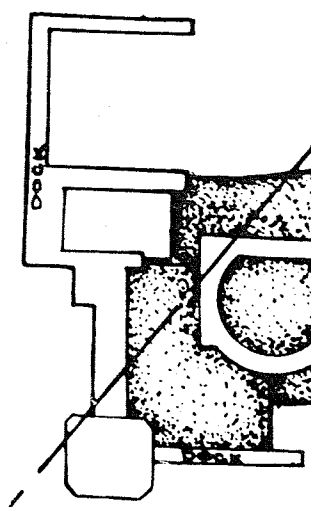
REFEREE'S

2150-60	2150-42	2150-13	2150-30
50	185	200	

MINN. POINT RANGE 1977
RANGE 1477
U.S.E. BASE LINE

GOV. LOT 1 - PARCEL 5
2750-80

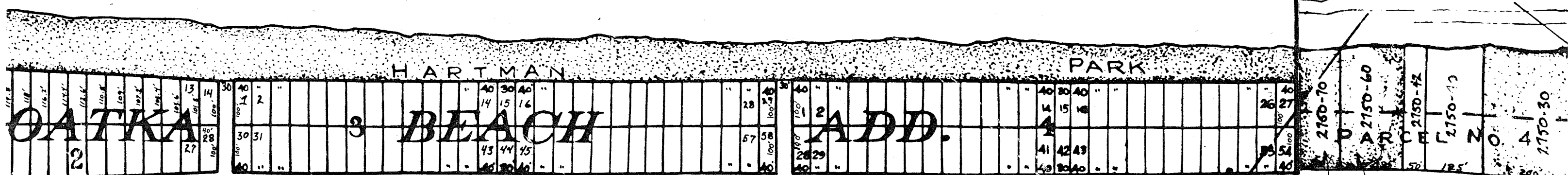
PARKING



U.S HARBOR LINE

N. 42° 36' 39" W. - 10027.83'

SUPERIOR



2750-70 2750-60 2750-50 2750-40 2750-30

2750-70 2750-60 2750-50 2750-40 2750-30

2750-70 2750-60 2750-50 2750-40 2750-30

2750-70 2750-60 2750-50 2750-40 2750-30

2750-70 2750-60 2750-50 2750-40 2750-30

2750-70 2750-60 2750-50 2750-40 2750-30

2750-70 2750-60 2750-50 2750-40 2750-30

2750-70 2750-60 2750-50 2750-40 2750-30

2750-70 2750-60 2750-50 2750-40 2750-30

2750-70 2750-60 2750-50 2750-40 2750-30

2750-70 2750-60 2750-50 2750-40 2750-30

2750-70 2750-60 2750-50 2750-40 2750-30

2750-70 2750-60 2750-50 2750-40 2750-30

2750-70 2750-60 2750-50 2750-40 2750-30

2750-70 2750-60 2750-50 2750-40 2750-30

2750-70 2750-60 2750-50 2750-40 2750-30

2750-70 2750-60 2750-50 2750-40 2750-30

2750-70 2750-60 2750-50 2750-40 2750-30

2750-70 2750-60 2750-50 2750-40 2750-30

2750-70 2750-60 2750-50 2750-40 2750-30

2750-70 2750-60 2750-50 2750-40 2750-30

2750-70 2750-60 2750-50 2750-40 2750-30

2750-70 2750-60 2750-50 2750-40 2750-30

2750-70 2750-60 2750-50 2750-40 2750-30

2750-70 2750-60 2750-50 2750-40 2750-30

2750-70 2750-60 2750-50 2750-40 2750-30

2750-70 2750-60 2750-50 2750-40 2750-30

2750-70 2750-60 2750-50 2750-40 2750-30

2750-70 2750-60 2750-50 2750-40 2750-30

2750-70 2750-60 2750-50 2750-40 2750-30

2750-70 2750-60 2750-50 2750-40 2750-30

2750-70 2750-60 2750-50 2750-40 2750-30

2750-70 2750-60 2750-50 2750-40 2750-30

2750-70 2750-60 2750-50 2750-40 2750-30

2750-70 2750-60 2750-50 2750-40 2750-30

2750-70 2750-60 2750-50 2750-40 2750-30

2750-70 2750-60 2750-50 2750-40 2750-30

2750-70 2750-60 2750-50 2750-40 2750-30

2750-70 2750-60 2750-50 2750-40 2750-30

2750-70 2750-60 2750-50 2750-40 2750-30

2750-70 2750-60 2750-50 2750-40 2750-30

2750-70 2750-60 2750-50 2750-40 2750-30

2750-70 2750-60 2750-50 2750-40 2750-30

2750-70 2750-60 2750-50 2750-40 2750-30

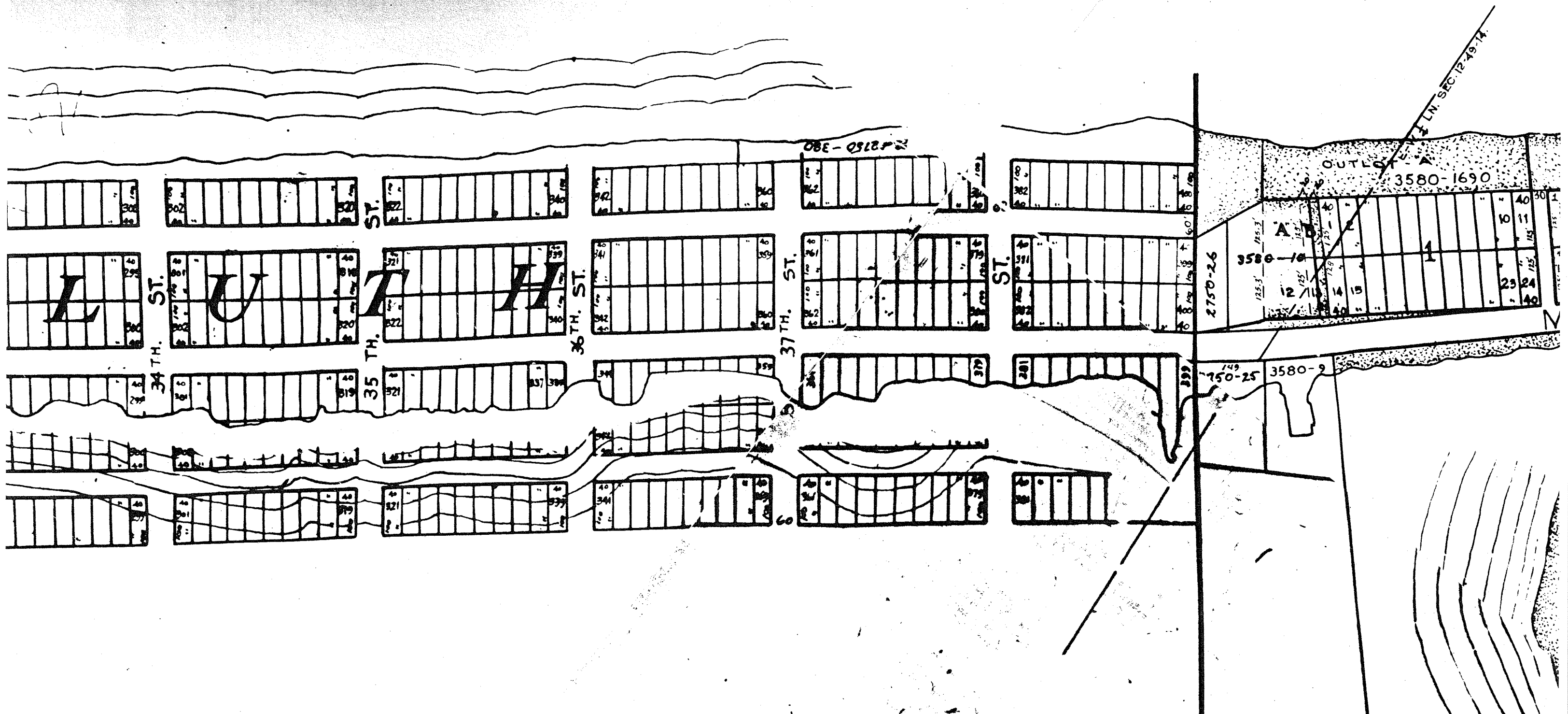
GOV. LOT 2, SEC. 12-49-14

OUTLOT 2

OUTLOT 1
3580 - 1700

SEC 12-49-14
SEC 13-49-14

2750-50



BAY