



The Breeze *of Park Point*

Park Point Working Group

Tuesday, May 5th

7 p.m.

Lafayette Community Center

Park Point Community Club Meeting

Thursday, May 14th,

7 p.m.

Social at 6:30

Lafayette Community Center

Lafayette Edible Garden

Monday, May 18th

6 to 8 p.m.

potluck dinner

Lafayette Community Center

Park Point Garden Club

Thursday, May 28th

Contact Harriet Meagher

722-6762

Update from the Park Point Working Group

The following resolution passed nearly unanimously at the Park Point Community Club meeting on Thursday, April 16 at Lafayette Community Center:

The PPCC supports the following:

- 1.) That the City Council amend Resolution 14-0262R to remove section (d) that endorses the Tier 2 beach access system, and repeal City Resolution 14-0476R which requires a collaborative study to determine which 16 street ends would have been chosen;
- 2.) That the public access be protected, with the current working group involved in the process of developing a public access plan that respects the environment, and the needs of both residents and visitors.
- 3.) Until a community based plan can be developed, the moratorium on street end vacations should continue.

Members of the Working Group worked hard to find a position on which the majority of the Community Club could agree and support; this PPCC resolution is the result of their dedication to our greater community.

Following the PPCC meeting, the Working Group began developing a strategy for moving the resolution forward: most immediately negotiating with the City Councilors and the City of Duluth Planning Department.

Members of this group presented the recently passed resolution at the City Council meeting on April 27th during the public comment period.

All City Councilors will be contacted by group members, with the intent of setting up personal meetings before the Planning Department Study Group commences.

Judy Dwyer, Bob Swanson and Dave Poulin, members of the Working Group, have submitted their request to represent the Park Point Community Club on Planning Department Study Group.

Councilor Sharla Gardner announced that the first meeting of the City Planning's Tier 2 Study Group will be in City Hall Room 303 at 4:30 pm, Wednesday, May 6.

The next meeting of the Park Point Working Group is scheduled for 7 pm on Tuesday, May 5 at Lafayette. All interested people are welcome.

Park Point Working Group: Lisa Berthel, Bob Boynton, Judy Dwyer, Gale Kerns, Lyn Clark Pegg, Dave Poulin, Bob Swanson, Chelly Townsend, and Lynn Wegner

The mission of the Breeze is to serve the community by:

1. Publishing the minutes and financial statements of the Park Point Community Club.
2. Informing the community of upcoming meetings, events, happenings and projects.
3. Providing a forum for Park Point residents to air their concerns.
4. Sharing the history, stories and anecdotes that make Park Point a unique place to live.

The Breeze

Editor: David Bacchus

Submissions for the June issue are due by Wednesday, 5/27/15.

Send to: ppbreezeeditor@gmail.com

Park Point Community Club

Officers:

President: Dawn Buck

parkpointcc@gmail.com

525-1764

Vice President: John Sargent

3740 Minnesota Ave.

763-276-8556

Secretary: Open Position

Treasurer: Al Robins

722 Minnesota Ave.

720-6518

Committees:

Art Fair: Carla Tamburro

coordinator@parkpointartfair.org

218-428-1916

Rummage Sale:

Dave Lavamaki

pointer12@q.com

729-8925

Environmental: Dick Gould

727-4067

Hospitality:

Diane Gould

727-4067

Ted Buck

525-1764

Lafayette Square Rentals:

Missy Steichen

ppccdih@gmail.com

218-208-9545

The Postcard: Dawn Buck

parkpointcc@gmail.com

Sunshine: Pam Griggs

pamgriggs101@gmail.com

218-260-6032

Park Point Community Club

P.O. Box 16326

Duluth, MN 55816-0326

www.parkpointcommunityclub.org

Letter from the PPCC Vice President

Dawn asked me to write the Letter this month. So another nail in the coffin of my “do nothing” vice presidency. Oh well. At any rate, to start off, the PPCC membership list should be updated on the web site by the time you read this. A few concerned members wondered why their checks had been cashed, while their names have not shown up on our official list. The answer is that they take some time to put together – it is not simply a matter of typing names in a document. We have a spreadsheet to capture all the membership information, but that needs to be massaged and reformatted. Only the Webmaster has access to modify the final online document. Bottom line: for any membership concerns, please email jtsargent7@msn.com.

Prime time activities on the Point are gearing up with the advent of beautiful spring weather. First off, coming in May is the Magic Smelt Run, Parade and party. Jim Ouray, the creative godfather of the event, showed up at the April PPCC meeting with details and flyers about the parade and its fun preparation workshops. May 17th is the date, which should be warm enough for everyone to enjoy. Run, Smelt, Run!

Plans for the rummage sale are firming up nicely for June 12 and 13th. There were some inquiries about using Lafayette fields for vendors and booths, but that apparently has been tried in the past without a positive experience. The time and expense of cleaning up the resulting mess clearly turned out not to be worth the meager income generated by rentals. I've been cleaning up my garage and shed, coming across some extra items that would look great on a rummage sale table - not enough to really fill a table, but maybe I'll piggyback with someone else's sale. The PP Edible Garden will have their usual sale, and will take any garden or kitchen items anyone wants to donate. I think some of my things will be showing up there.

Plans for the Art Fair are going swimmingly, as well. Carla and the Art Fair committee are doing their usual superb job of organizing and promoting the event. One bone of contention that keeps getting chewed on revolves around the additional use of grants to support the fair. Obtaining a grant in any given year involves a lot of work, but the real downside is that these grants nearly always prohibit profit-taking. The Art Fair has traditionally been the PPCC's largest fund raising activity; yet unknown is whether the additional advertising and improved infrastructure our grants have provided will result in greater financial success in the future. However that discussion resolves, this year's fair should be better than ever. Volunteers are needed and welcome.

The no TIER 2!!!” effort continues. Our dedicated and intrepid Park Pt. Working Group is forging ahead with a two-pronged approach: 1) The proposed City Council Study Group will start meeting in May. At the April 16th PPCC Meeting, members voted to have Working Group members represent us at Study Group meetings (4 scheduled) and report back. At present, the latter is charged with selection and review of the proposed 16 public-use access points previously authorized via two separate City Council resolutions. 2) At the April 16th meeting,

Letter from the PPCC Vice President continued

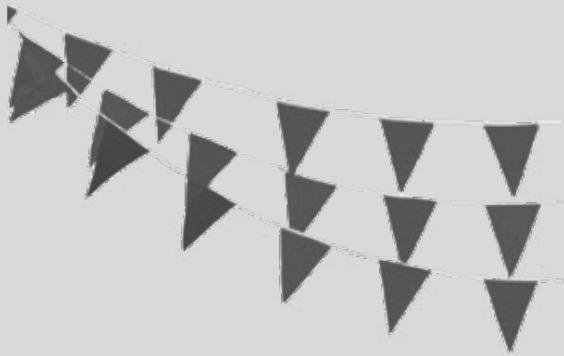
membership also resolved to amend/repeal those resolutions. [Confused? See cover story for details.] We all hope that final outcomes will optimize the interests of all Park Point residents. As a reminder: The Duluth City Council Mission Statement includes the goal of “develop(ing) effective public policy rooted in citizen involvement that results in excellent municipal services and creates a thriving community prepared for the challenges of the future.”

Lyn Clark Pegg forwarded me an interesting PowerPoint on Ecotourism that was created by the UMD Urban Planning class, which outlined their vision for meeting the challenges of the future. It presented several unique perspectives that might be adapted for Park Pt. The ecotourism approach would obviously be attractive for Park Pt., in that less structural development would be called for, including those for sewer, water, and underground cable improvements. Concomitantly, more ecological attractions such as biking, trail hiking, birding and kayaking would need to be promoted. The cruising and noise displays that characterize the Point in summer would then be discouraged. And couldn't our transportation needs be met with smaller, more efficient vehicles, without reducing ridership? Where is it chiseled in blue stone that our Route #15 riders require big, lumbering buses that put stress on our avenue's surface? Also, although I admit that our harbor is designed primarily for industrial use and that there are obvious roadblocks to developing ecotourism, I find that vision much more appealing than the infrastructure development required to support hotels and shopping. “The Point at Canal Park” – no, thank you!

At present, we have a small area plan with modest proposals to meet the challenges of the future, with many residents saying, “Too much; we want a plan for the future with none of this, no changes!” At least, that may be the way City Councilors views this. However, any future plan that calls for no change is simply not workable, even in the most stable of neighborhoods. Maybe we need to come up with our own ideas for how we, as residents, envision the changes we see on the horizon - if you will, a Pointer's version of a plan for this small, very special area.

Hope I didn't “press on” too much here...but now I see the bay is smooth as glass, with the scullers skimming across the water as if gliding on air, and I'm off to greet the perfect day.

Best regards,
John Sargent, Vice President



Think good weather!

Rummage Sale Guidelines

1. All rummage sales and food vendors must be set up on private property. Sales are not allowed on public property (streets, sidewalks, “S” curve, etc.)
2. All food vendors must be currently licensed for Duluth.
3. Please support the Park Point Art Fair, June 27 & 28, by not holding rummage sales that weekend.

Dave Lavamaki, Rummage Sale Chairman 729-8925

PPCC Meeting Minutes - 4/16/15

Meeting called to order at 7:02 p.m.

Rules suspended to allow report from DPD Officers Amber Peterson and Craig Lindberg: 70 calls last month, 62 of which were “self-initiated field-activities (SIFA), which means they were generated by officers already on the scene. Most speed-related; 1 attempt to locate a missing person; 2 Suspicious Activity alerts. Craig noted persisting problems with the “mud pit” within the Recreation Area; he’s investigating several ways to address this, including the placement of large rocks in the area and increasing penalties from the current misdemeanor designation to Criminal Damage to Property, a difficult charge to prove in court. Officer Lindberg is also involved in Special Operations Training (our local “SWAT” team.)

Reading of last month’s minutes: No corrections; motion to approve, accepted.

Treasurer’s Report - Al Robins reported little change over past 2 mos.; recent Breeze bills have been higher than usual, due to length. Primary account currently contains \$39,590; Art Fair account stands at \$17,718. The latter will approach \$50K next month, as both MN Arts Board Grant monies and artist fees start coming in. Money in the Art Fair account goes up and down dramatically as expenses are paid. Motion to accept report approved unanimously.

Communications Received - 1) From Dennis Hoelscher: Fire and Medical Emergency Services Report - Motion made and seconded to include his letter in the May issue of the Breeze (2 votes against.) 2) From Jan Karon: Letter of concern regarding several items printed in the April Breeze; questions raised as to clear identification of study groups & committees, plus other issues of article authorship & protocol. Complete copies of both letters distributed by President Buck.

Environmental Committee - Dave Johnson discussed brochure describing potential designation of Pontlana Woods as public wetland; more copies of the brochure are widely available for distribution . Dave noted that by working thru the City Council & Mayor’s office we can have more leverage w/ St. Louis County; also reported support for the project received from both UMD and the Sea Grant representatives. Dave & Gay Hooper are seeking the oldest photos of the area we can locate, preferably looking down on the parcel from the hillside prior to digging of the canal. Motion made and passed unanimously to accept the following resolution: “The Park Pt. Community Club formally endorses and will promote the plan set forth by the Environmental Committee to establish Pontlana Woods as a City of Duluth park. This plan shall be presented to the Duluth City Council and the Office of the Mayor. Expenses for promotional materials (flyers and photographs) shall be paid by the Club up to the amount of \$200.

Item 2: Dick Gould reported that the City still has yet to place trash cans at Tier 1 sites (12th St., La-Fayette, Recreation Area); clearly, according to Dick, the City has been unable to demonstrate ability to properly care for Tier 1 sites, much less an expanded listing of proposed “Tier 2” access points. Volunteer planters needed during the second week in May for the 400 trees on order.

Youth Committee - Liz Mackay corrected Summer Youth Program participant ratio: 30 of last season’s total of 47 participants came from Park Point; remaining 17 from throughout the city. Second vote sought to approve the \$10K budget; passed unanimously. Al Robins reported that last year’s expenses came to \$14,812, \$9,900 of which came from fees payed by parents.

Sunshine - Pam Griggs sent three sympathy cards last month.

Hospitality - Thanks again to Diane Gould & Ted Buck for this month’s brownies & coffee.

Watch Committee - Anything new? Nope!

Executive Board - “A pretty quiet month,” according to our ironic Vice President, John Sargent. John also reported the resignation of Breeze Editor David Bacchus.

PPCC Meeting Minutes - 4/16/15 continued

Breeze - Executive Board received a request from Natalija Walbridge to work under a contract, with stipend; they recommend approval. She will exercise expanded duties, taking on new title of Managing Editor. Discussion regarding what constitutes the "committee;" the Executive Board has been serving as the de facto Breeze Committee. Gale Kerns expressed concern regarding potentially significant cuts/revisions to articles without permission of the author(s); Natalija reminded all that substantive changes are always discussed with authors before publication. Ellen Dunlap proffered that people may find comfort in reading the new contract. [See both "Contract Between PPCC and Managing Editor" and "Contributing to the Breeze" elsewhere in this issue.] Betty Sola suggested one way to handle competing views might be inclusion of a Point/Counterpoint format, with a specific attempt to find balance as to both length and content of letters. Motion to approve the contract (\$300/mo. stipend) approved unanimously; next month will require a second vote.

Old Business - Jim Ouray looking for a second vote on "Run Smelt Run" - the Smelt parade: "A little nonsense now & then is just the thing for some smart men." Parade will include 10-piece brass band. Festival to include multiple workshops. Motion made & seconded to contribute \$300 (2nd vote); passed unanimously.

St. Louis River Alliance - The St. Louis River Alliance is preparing to launch a monofilament fishing line recycling program along the St. Louis River Estuary. The PPCC is sponsoring a collection bin at the PP boat launch/ramp at the \$100 per year level. Pam Griggs has offered to assist with disposal.

Street Ends - "The Park Point Working Group" distributed a one-page summary of their work over the past several months attempting to address the community's misgivings regarding the City of Duluth's present plans for limiting pedestrian water access. Members emphasized that their proposals tonight neither specifically support, nor reject, either open or reduced access via Street Ends. Rather, they wish to begin by seeking to have the City's Resolution #14-0262R amended, and Resolution #14-0476R repealed, in the hope of achieving a more mutually-satisfying plan. [See full discussion and PPCC resolution in this month's cover story.] Other aspects of the group's proposal included a) asking that their group be allowed to represent the Club in further discussions with the City on revising its Plan, as well as b) a moratorium on the granting of street end vacations until a new, more acceptable plan can be achieved. Working Group members reminded all that they believe removal of the current plan would be necessary before discussion can reasonably continue. Motion to approve the 3-part resolution approved; one vote against.

Lyn Clark Pegg suggested the completion of a comprehensive, independent survey of residents this summer, possibly via UMD's Urban Geography grad students. Dick Gould reiterated his belief that "the City has clearly demonstrated its incapability of properly maintaining the existing Tier 1 access points" (12th St., Lafayette, Recreation Area.) Dave Poulin reminded all of the compelling need to address the present insufficiency of emergency services: "If we could get past the distraction of this street-end business, we might be able to move forward on that more pressing issue." Several Working Group members concluded by stressing the need to work with, rather than against, both City Councilors and representatives of the Planning Department.

Meeting adjourned at 9:07 p.m.

Submitted by Ellen Dunlap

Our Lady of Mercy Catholic Church

2002 Minnesota Ave

722-3078

Fr. Peter Muhich and Fr Elias Gieski

Words of Prayer

Missionaries who visit the people living along the Bene River in Bolivia sometimes stay overnight wherever space is available. On one trip a devoted missionary named Catherine spent the night in a storage shed infested with rats. She was unable to sleep - but the rats couldn't sleep either because this pious missionary sat up all night saying again and again: "Meow!, Meow!"

Prayer works. There is no secret formula, magic words or mandatory phrase that commands God's attention. There is only one condition - we must pray from our heart and in Jesus' name. The door that opens in prayer may not be the one you knocked on, but it will be the right one for you.

Going forward, don't just recite words of prayer but rather talk to God as to a friend. Tell God what is on your mind and heart. We have God's promise to listen.

O God, too often I feel as if I am pounding on the wrong doors. I am afraid that you are too busy for me or that I'm not good enough. Remind me that you are always there and all I need to do is to call your name. In Jesus' name, Amen

**Mass 8:00 AM every Sunday with confessions at
7:40**

Lafayette Rentals

Lafayette is a great place to hold weddings, reunions, parties, meetings, workshops, etc...

Rental fees are as follows:
up to 50 people - \$100.00
50-100 people - \$200.00
100-125 people - \$300.00

There is a damage deposit of \$100.00, which is refundable, after cleaning & inspection.

Hours available are 8:00 am - 10:00 pm

Contact: Missy LePage at
218-208-9545 or by e-mail at
ppccd1h@gmail.com

Is a **Reverse Mortgage** *something you should consider?*



A checklist to see if a **Reverse Mortgage** might make sense for you.

- ☒ Could you use extra cash or monthly income?
- ☒ Do you have quite a bit of equity in your home?
- ☒ Do you want to remain living in your home for as long as possible?
- ☒ Are there repairs or improvements you would like to make to your home?
- ☒ Are there extra things you would like to do for yourself and your loved ones?

If you are 62 or older, find out how much tax-free cash you qualify for. Call WesternBank - your locally owned hometown bank since 1904.

 **WesternBank**

723.1000
www.wbduluth.com

WEST DULUTH OFFICE • 201 North Central Avenue
DOWNTOWN OFFICE • 202 West Superior Street
MILLER HILL SUPER ONE OFFICE • 5401 Burning Tree Road



Edina Realty.

SHINING THE WAY TO
YOUR NEW HOME!



Lynn Bentfield
Realtor, GRI

Cell: 218.464.3790
Fax: 218.728.7710
1515 London Road | Duluth, MN 55812
lynnbentfield@edinarealty.com
www.edinarealty.com



Duluth Native &
Park Point
Resident
23 years
of experience

Duluth-Superior Sailing Association

www.SailingForAll.org

(218) 391-5521

Join our
Sunday afternoons
at the races



Proudly hosting
D21 Laser Regatta
August 7-8

Youth, Adult, Group, and Private Lessons
Weekly Races, Advanced Sail/Race Coaching
Community Sailing

We're on Park Point, next to the public boat launch.

As promised in the April edition, I have further definitive information on the certainty of an historic cemetery beneath the S-curve blacktopping...the data generously provided by friend Christine Carlson. She writes/researches for a publication of the Fond du Lac Band. She learned that there were two graveyards on the Point and a third one described as an eighty-acre plot "on the brow of a bluff 500 feet above the lake with a fine view."

It was said that Chief Buffalo (who once owned much of the present day downtown area) wanted the Treaty of 1854 to ensure protection of this "sacred burial grounds of his people."

Information in the Anna Thomas account Christine found in the Superior Public Library was further verification of the cemetery at the S-curve. It was then described as being where "a life-saving station stood." The Thomas paper author said "...with the constant shifting of the sand from the heavy winds, many of the caskets were uncovered. In passing back and forth to school, we had to pass directly through the graveyard. The grave that attracted us most was that of an Indian chief."

Apparently, there was limited respect for the dead. School kids and shameful neglect became a problem. She continued, "We would lift the small (covered, above ground) house off and gaze in admiration at the beautifully breast piece, his war paint and his feathers and pipe and tobacco were placed on the casket with him, most of them (caskets) of rough board boxes were worn and rotted away, many of them were crushed in by cows walking over them. Several of the bodies were exposed and easily recognizable."

The city officials finally came to the obvious conclusion that decency should prevail and removal of the bodies must be handled officially. The caskets and human remains were placed on the beach for pick up by a scow. After some delay caused by a storm, the collection was deposited in what was assumed to be the final resting place for the deceased in the earth at Thirteenth Avenue East and Fourth Street.

However, after a few years, they were taken on their truly final journey to the Forest Hill Cemetery. It remains unclear to this day whether all of the human remains under the S-curve have been removed. I believe it would be a fine gesture by the city administration to erect a plaque at this site to memorialize its role in the history of the Point.

**Copy by Glenn Maxham
with technical assistance from Anita Neinstadt**

The S-curve Ojibwa burial grounds probably looked like this.



EXTENDED BY POPULAR DEMAND!

Eating fit!

**A healthy serving of
healthy servings**



Thai Chicken with
Sesame Dressing

Due to the overwhelming responses to Eating Fit, it is now going to stay on the main menu! Enjoy the flavors of Green Mill and be true to your commitment to eat healthy. Counting fats, calories or even dietary fiber? The Green Mill Eating Fit menu features healthier alternatives – many that meet the requirements of today's most popular diets.



340 Lake Ave ★ Duluth ★ 218-727-7000

www.sfhs.org



**Franciscan
Health Center**

On Beautiful Park Point

*24/7 Full Service Skilled
Nursing Care & Rehabilitation*

Caring is what we do - naturally!



3910 Minnesota Ave., Duluth ♦ 218-727-8933

Legal issues are too important to handle yourself!

Consult



**Larry L. Leege
Attorney At Law**



Primary areas of practice include:

Real Estate, Estate Planning, & Business Planning

Seller/Buyers
Deeds/Contracts/Purchase Agreements
Landlord/Tenant
Wills/Trusts
Power of Attorney
Health Care Directive
Transfer on Death Deeds
Pre-Nuptial Agreements
Corporations
Partnerships
LLC's

*Real Property Law Specialist. MSBA certified
Available at your home or mine

Larry L. Leege, P.A.
218-831-0438
Park Point Resident
Leegepa@brainerd.net

**AVIS IS IN YOUR
NEIGHBORHOOD**

AVIS



- Economy, Mid Size,
Full Size, and Premium Cars
- 5 Passenger 4x4 SUVs
- 7 Passenger Vans
- 7 Passenger 4x4 SUVs
- Unlimited Mileage Rates

Competitive Daily, Weekend, Weekly & Monthly Rates
All Major Credit Cards Accepted including Debit Cards

Convenient Locations

**AVIS Airport/Downtown
218-727-7233**

**For Nationwide
Reservations** 1-800-331-1212
avis.com

Park Point Garden Club Suggests Vermiculture



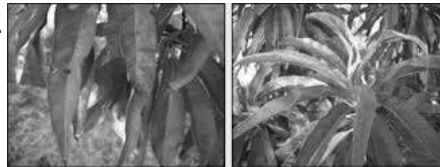
Pictured are invertebrates that can produce a great amendment for your soil. It is the worms' by products that are the most valuable for your garden. Worms' soil-like castings (worm poop) have many microorganisms that continue to build fertility in the soil. Another product created by the worms breaking down the unwanted food matter is "worm juice." It will collect at the bottom of the worm house, so it is necessary to have a way to drain the house. The juice should be watered down to a 10 to 1 ratio of water to juice. You can use it for indoor plants, as well.

An alternative to putting more worms into your soil is to build a home for the worms. You will learn the science (called "vermiculture") of letting worms convert unwanted food matter to nutrient-rich materials. Choose any type of worm, but at the top of the list are red wiggle worms. A simple vermicomposting system can be set up. There will be no smell if you compost properly and the temperature is correct for indoor or outdoor placements. Worm houses and the worms can be found online through such sites as Amazon.com. You can also build your own house (see <http://lifehacker.com/5882478/diy-worm-compost-bin>). The worm population will double every 2-3 months. They are voracious eaters and can eat their weight every week.



Once you have the properly built house, determine the materials to nurture the worms such as compost and soil. The Worm House should remain heated to a steady 200 degrees to kill any pathogens or undesired critters you don't want interacting with your worms. Keep this living headquarters just slightly damp to the touch, perhaps using a spray bottle.

You can also compost using your worms. Avoid anything that you think can or may spoil easily, or take a while for the worms to eat. Also, avoid processed foods, dairy, meat, and citrus. Worms seem to enjoy salad left overs (no dressing), tomatoes, apples, plums, berries, pears, and most soft fruits/vegetables. Start feeding them slowly and increase feedings in intervals when your worms are ready. If you overfeed and notice some food starting to rot remove it immediately as rotting food can attract all kinds of unwanted creatures. You may find your worms have a favorite such as sliced tomatoes. They can also eat the contents of a bag of salad mix in 3-4 days. Apples take them longer, and they don't seem to like bananas. Below is a plant before worm juice and after. Visitors are welcome to Garden Club meetings. Please contact President Harriet Meagher 722-6762 for details.

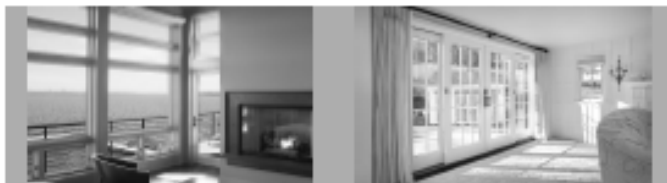


BEFORE

AFTER

Submitted by Kristelle Miller

IMPROVING LAKE VIEWS SINCE 1992



www.heritagewindow.com
715-394-7390

Heritage
Window & Door 

BROTHERS WINDOW CLEANING + carpet, floors & upholstery

PO Box 16846
Duluth, MN 55816
office 218-724-4641 | cell 218-393-4924
browin4918@hotmail.com
BrothersCleaningDuluth.com

We do great work
at a great price!



Gary Hendrickson
Owner

Fire and Medical Emergency Services are a Citywide Concern

Fire and Medical Emergency Services are a Citywide Concern

Issues include:

- Lack of staffing - 30% of Duluth Fire Department companies are inadequately staffed.
- Lack of appropriate level of medical training for the Duluth Fire Department.
- An entire area of the City is without essential emergency services every time the lift bridge is up (Park Point).

On December 3rd 2014 the above concerns and detailed remedies were presented to City officials. The presentation was a report titled **Resident's Concerns About Insufficient Fire and Medical Emergency Services in Duluth, Minnesota.** Fire Department officials have been very open and cooperative in these discussing these concerns. Elected officials have not engaged in the process.

The Duluth Fire Department is a professional and well managed organization.
It is problematic elected officials (Mayor and Council) are placing Fire & EMS at a low priority level.

In 2014 the city spent tens of millions of taxpayers dollars on “amenities”, things that are “nice” to have. The City of Duluth in 2014 had an annual budget over \$85 million. Officials were successful finding additional funds, of over \$20 million, for amenities, e.g. a ski resort, two 27 hole championship golf courses, indoor ice arenas, a baseball stadium, an aquarium, zoo, theater, bike trail, recreational airport, and the list goes on. These amenities are recreational in nature and many accommodate very narrow segments of the community.

On March 23, 2015, Mayor Don Ness announced on Minnesota Public Radio an additional \$14 million will be spent on more “amenities” (his word). These include “new mountain biking, hiking, skiing, and equestrian trails, a paddling center, and improvements to city parks, the zoo, and Spirit Mountain.”

When nearly one third of Fire Department companies fail meeting minimum OSHA requirements for staffing, (that one third is based on the Cities own consultant's report, the Comprehensive Study of the Duluth Fire Department) it means when that first fire truck arrives at your house or business, fire fighters are not allowed to enter the structure and commence fire fighting actions.

Tax payers monies should be utilized for addressing this concern before “amenities”.

In Duluth paramedics arrive on the scene of a call nearly three minutes after the Fire Department (documented in the Cities own consultant's report).

Life is dependent on timely intervention/treatment for medical emergencies. **The National Institute of Health (NIH):** *“Time is very important when an unconscious person is not breathing. Permanent brain damage begins after only 4 minutes without oxygen, and death can occur as soon as 4-6 minutes later.”*

Life threatening medical emergencies due to cardiac arrest, stroke, and other conditions **require** advanced life support intervention (**The American Heart Association (AHA).**

Paramedics have the knowledge, skills, and are authorized, in performing those advanced life support interventions, Emergency Medical Technicians (EMT's) do not . Duluth Fire Fighters are trained as EMT's.

Emergency services staffing, training, and equipment should be a cities top priority.

When an entire area of the city is without essential emergency services over 4,500 times in a ten month period, every year, (the number is from City records on bridge lifts) this must be immediately rectified.

Elected officials need revisiting of priorities. Resources must be provided for bringing emergency medical services at least in compliance with OSHA regulations and national standards.

What functions performed by a municipality are of a greater priority then essential fire and emergency medical services? The lives and property of resident's and the safety of Fire personnel should be of highest priority. Each day the current conditions exist places individuals and properties at risk. These are critical issues and need immediate remedy.

- ◆ The DFD needs to be fully staffed.
- ◆ The DFD needs the capability of performing advanced life support.
- ◆ An entire segment of the City needs Fire and Medical emergencies services when the lift bridge is up.

Lafayette Community Edible Garden News

At our May 18 potluck we will welcome local celebrity gardener François Medion, whose presentation is rescheduled since we could not get into the Lafayette Community Center for his original date in March. Born and raised on a small family farm in southwest France, Francois has been working in the United States for the past 30 years, transitioning from the restaurant industry to outdoor occupations as landscaper and gardener, bringing him back to his roots. Today he is the farm manager at the Duluth Grill, setting up an innovative aquaponic system that will provide the restaurant with year-round fresh vegetables and fish. Francois' talk will focus on growing a resilient garden that is nurtured as organically as possible.

If you have any questions about our monthly potluck dinners or community garden, call Coral McDonnell at 727-6455.

Garage Sale Donations:

Our community garden will participate in the Park Point Garage Sale in June. We do this to raise money to support our garden. If you have items you would like to donate for our garage sale, stay tuned. We will send out drop-off information once it's been determined.

Potatoes: Our Duluth Vegetable of the Year

When planning your summer garden, remember that our Duluth Community Garden Program has determined potatoes to be our Vegetable of the Year. To help you plant a successful potato crop, here is some planting advice from the Old Farmer's Almanac:

- Plant seed potatoes (pieces of whole potato or a small whole potato, with at least 2 eyes per piece) 0–2 weeks after last spring frost.
- If you are cutting up potato pieces for planting, do so 1–2 days ahead of time. This will give them the chance to form a protective layer, both for moisture retention and rot resistance.
- You may start planting earlier, as soon as soil can be worked, but be aware that some crops will be ruined by a frost.
- Spread and mix in rotted manure or organic compost in the bottom of the trench before planting.
- Plant seed potatoes one foot apart in a four-inch deep trench, eye side up. Create a mound on top of planting site. Exposure to sun early can turn potatoes toxic and inedible.

Upcoming Events:

Monday, June 22, 6 to 8 p.m., monthly potluck dinner celebrating the summer solstice.

Submitted by Susan Peters

Park Point Breeze Classified Ads

4 lines \$10 per month
each additional line \$1.00

Contact: ppbreezeeditor@gmail.com

Looking for house cleaner on Park Point

One day per week, 4-6 hours

For details call Mary Wade

218-591-0016



Have a spring or summer graduate
you'd like to honor in the
June issue of the Breeze?

Send his/her name and the school or program from which s/he's graduating to ppbreezeeditor@gmail.com no later than 5-27-15. Congratulations will be offered by the Park Point community at large; individual messages "signed" by friends and family can also be posted in a paid classified advertisement, if you choose.

Park Point Breeze Business Ad Rates

2" x 3" \$10 per month / \$100 per year

4" x 5.5" \$30 per month / \$300 per year

8.5" x 5.5" \$60 per month / \$600 per year

Contact: ppbreezeeditor@gmail.com

Park Point Happenings...



Stay in touch with the Park Point Art Fair

- ParkPointArtFair.org ... get the latest info via blog posts, video, artist images, stories and PPCC involvement. This year's event features 115 juried artists, food court, live music stage, an all day iron pour, print making and fiber arts, family make and take activities and more.
- Facebook.com/parkpointartfair.com ... follow our community event and learn about partnerships, volunteers, area arts activities, and share the event with friends.

Volunteer at 45th annual Park Point Art Fair this June

Here's a fun way to connect with neighbors, artists and the larger community. Spend a couple hours contributing to the PPCC's signature annual event.

- To help distribute posters and bookmarks in May and June, contact Carla Tamburro at coordinator@parkpointartfair.org
- To join the publicity team and share social media and email updates, or to join the Art Fair Committee, contact Jake Kapsner at jakekapsner@yahoo.com
- To sign up for the weekend event crew—2-hour weekend shifts as a greeter, booth sitter, make and take tent teacher, as well as Friday setup or Sunday cleanup—please contact Diane Gould at (218) 727-4067.

The 2015 event is made possible in part by the voters of Minnesota through a grant from the Minnesota State Arts Board, thanks to a legislative appropriation from the arts and cultural heritage fund.

Submitted by Jake Kaspner

The Lafayette Summer Youth Program runs June 8 - August 6, Monday -Thursday, from 8:00 - 4:00. Fees for the program are as follows:

- \$400.00 for 1st child in family (9 weeks)
- \$300.00 for each additional child per family (9 weeks), or
- \$60.00 per week per child (4 day week)
- \$20.00 per day per child

Bus fare for field trips is included in the fee; however, additional costs for field trips are the responsibility of the participant.

First priority will be given to Park Point residents and their relatives, with remaining openings based on the date postmarked on the registration form. Form available on the Park Point Community Club website.

Mail to: Park Point Summer Youth Program, PO Box 16326, Duluth, MN 55816-0326. Please do not send payment with the form. Registration open thru May 15, 2015. Notification of acceptance will be sent via e-mail.

Submitted by Liz Mackay

Planting Trees on Park Point

This year we have 400 seedlings to be planted at five locations, including 12th street, Lafayette, Southworth Marsh, Hearding Island, and the recreation area.

Volunteers are needed, May 14-16. Bring pails and shovels.

For more information, call Dick Gould at 727-4067, 348-3768 or e-mail at rpgould@charter.net.



New (old) Editor for the Breeze

As you read the Meeting Notes, you'll note that David Bacchus has resigned his position as Breeze Editor. The Executive Board and membership at large thank him for his work as writer, editor and researcher during his short time at the helm. Natalija Walbridge has agreed to return to her prior post.

At the April 16th PPCC Meeting, membership accepted the Executive Board's recommendation to authorize a stipend in acknowledgment of the ever-growing complexity and time it takes to plan, edit, produce, and manage the production and distribution of a professional product.

[While the resolution to accept this contract was approved on April 16th, a second vote will be required to complete the agreement.]

Annual Contract for Managing Editor of the Park Point Breeze:

Editor duties:

- (1) Review proposed advertisements/suggested articles & letters: Select, shorten, and/or otherwise adjust or reject according to:
 - a. limitations of space
 - b. appropriateness of the advertisement or other entry relative to community standards (e.g., appropriate use of residents' or public officials' names, foul or abusive language, or other issues regarding compatibility with the PPCC Mission Statement, etc.)
 - c. timeliness of the entry
 - d. possible redundancies
 - e. spelling/typographical or grammatical errors, where appropriate.

Any major adjustments to articles or other submissions will be discussed with potential contributors prior to publication. The Editor shall be entrusted to utilize his/her best professional judgment according to the guidelines listed above; conflicts after-the-fact to be settled in consultation with the PPCC President and/or Executive Board.

- (2) Plan the due dates for Breeze submissions which are included in each issue along with the editor contact information.
- (3) Coordinate with proofreader prior to printing
- (4) Communicate with the Executive Board for input on submissions that may require PPCC approval
- (5) Use fair guidelines and professional judgment to provide information to the community that is relevant and informative
- (6) Coordinate with authors to clarify content and publish contact information for all Breeze articles for clear understanding of the source(s)
- (7) Manage advertiser billing

Producing the Breeze has become a team project in recent years. Each of these very talented, dedicated, volunteer contributors are essential to the process:

- Ellen Dunlap - proofreader
- David Haavik - subscription coordinator & email distribution
- Diane Gould - bundle and deliver to neighborhood distribution volunteers, send snail mail subscriptions
- And of course the neighborhood distribution volunteers who help make the Breeze accessible for all.

Submitted by Natalija Walbridge

Contributing to the Breeze - Some Tips & Principles

As we embark on yet another “new era” for the Breeze and members review the new contract proposed for the Managing Editor (note new job title), we likewise wanted to clarify our vision of editorial expectations and responsibilities as we define them. Feedback on the topic is encouraged.

Our Goal: *The production of an informative, respectful, engaging, professional- quality publication.*

Changes and Limits

Punctuation/spelling fixes and typos - In the interest of producing a professional product of which we all can be proud, corrections of typos, spelling, punctuation, etc., will be made without notice to the person making the submission, as will minor adjustments for clarity. If it's clear from context that you meant to say, “Gosh, I love potatoes; they're the unsung king of vegetables,” but the way you wrote your sentence sounds as if you hate potatoes and can't imagine why anyone would eat them, then we'll try to fix that, although neither of us has time to call you about it when we do. If you have trouble remembering whether it's *there*, *they're* or *their*, we'll do our best to help you out there, too. On the other hand, it's the intention of neither the editor nor her nitpicking proofreader to remove the “color” or personal style from any writer's submission. We neither pretend nor wish to be your Creative Writing Instructor or your 8th Grade English teacher! Park Point would be nothing without our resident eccentrics, and we're certainly not aiming to make all writers sound alike.

In situations where substantial revisions for clarity, respectfulness, brevity or redundancy (see below) are deemed necessary, the editor will discuss this with the author in the hope of finding common ground on requested revisions. While the editor may sometimes suggest changes, the responsibility for altering the work as needed will fall upon the writer.

Brevity is not a small issue. Your letter or article may indeed be timely and well written, worthy of half a page or more, yet space limitations might not allow that luxury. The Breeze costs money to produce. Lotsa money, when it goes beyond eight pages or so. All editors have an obligation to sort through the submissions received, then choose from among them which pieces to publish. That's what editors do. While there may be times when going into “extra pages” can be justified, protecting the Breeze budget is one responsibility of a *managing editor*. Likewise regarding redundancy. When several articles or letters on the same topic are received, decisions must be made to shorten or eliminate one or more of them. In some instances, the compromise may be to postpone your submission for a later issue. [Hint: Please do not submit long, complex articles or letters at the 11th hour; get your piece in early and it's much easier to work with you. Revisions requested after the submission due date may require a 24-hour turnaround in order to accomplish printing in a timely manner. Multiple revisions may lead to holding an article for the next month's issue.]

Copyright /Accuracy/Integrity

While neither of us pretends to be an expert in copyright law, both of us have worked in fields where words and graphic arts matter. Plain and simple: you don't get to steal. When it comes to borrowing from other publications, people sometimes operate under the myth that “once something has already appeared in print, it's OK to quote it.” Well...yes and no. In general, courts have held that extracting a few words is reasonable, *so long as both author and publisher are acknowledged*. Quoting entire passages, however, is not. It might be OK to say, “As Davy Jones declared, in *The New England Pirate*, ‘That's one smart parrot!’ ” Extracting an entire paragraph including the parrot's full speech is not - unless you've received a written OK from the magazine and, in some cases, the parrot. Perhaps you think Pointers would be enlightened by a long excerpt from an article you've read discussing “Public vs. Private Pedestrian Rights to Great Lakes Waters.” Wonderful! Show the editor proof that you have permission to reprint and you're on, depending upon space availability. But please don't expect her to contact the publisher for you. That's your job.

Contributing to the Breeze - Some Tips & Principles continued

Accuracy - If you include the spoken remarks of others or submit statistics, you are expected to back them up with a source you can name. Please don't cite "what the majority says" without evidence. Articles will be held to a higher standard than letters to the editor, as readers understand the latter to be a matter of opinion. You should not assume editorial bias just because a smaller number of letters on your side of an issue has been published than on the "other" side. While an effort at balance will always be made, objectivity can be a multi-dimensional creature. If five letters are received representing one perspective, yet only one comes in expressing an opposing view, the Breeze will most certainly reflect that leaning. There are many aspects to fairness, however, and objectivity is not simply a matter of mathematics. If you don't see a letter representing your viewpoint, perhaps it's because you didn't write one!

Naming Names - two issues: Neither articles nor letters will be published anonymously. Period. When there are multiple authors, each writer should be named. At times, it may be acceptable to identify the entry according to a group or committee name, provided membership of the group is generally well known to most readers. In such cases, however, the principal author(s) of the piece should still be identified. Both first and last names should be used the first time a person is mentioned.

When it comes to naming politicians or other public officials in your piece, things can sometimes get a little sticky. Acceptable practice varies among publications. Again, respect will be the editor's primary guide. Say, "I find the actions of the County Board on this issue to be outrageous!" and you'll likely be published, at least in the opinions section. Call a Legislator a "two-timing, pickle-faced, toad eater who couldn't find his way around the block!" and you'll likely end up disappointed. Fair or not, writers in the Breeze are often perceived as representing the entire community of Park Point, not just themselves. The bar when it comes to our volunteer PPCC Officers is set a little higher, and when referring to Park Point neighbors in general, higher still. We admit to a bias in favor of praise. Write, "I've noticed that every single item Coral McDonnell submits about the Edible Garden is respectful, informative and impeccably written," and you'll likely see your remarks in print. Don't say, "that crazy lady with the red hat who's always sweeping the street in front of her house" and expect your description to be published, when you know most people will recognize her. In other words, articles and editorials should address the topic of concern, rather than attacking citizens by name or implication. Comment about the untrimmed shrubbery hanging over neighborhood sidewalks, but don't complain about your next-door neighbor, even in veiled terms. Bottom line: The Breeze will err on the side of courteous communications among residents. We are a neighborhood newsletter. Thoughtful consideration of diverse viewpoints will always be encouraged, but we're neither Mother Jones nor Modern Soldier. For that, you'll need to go elsewhere.

Final Thoughts: You have the editor's commitment to try and produce the most fair, informative, professional-quality publication she can, and her proofreader's commitment to ask questions when she thinks we've "missed." The editor gets the last word. Mistakes will be made, and we expect to be challenged when that happens. [But please be gentle with us when you do! Although the editor may now be receiving a stipend for the first time ever, most would agree that the pay grade for a job that typically requires more than 30 hours a month falls short of even a part-time job. Not that she's ungrateful...but do try to respect that neither the editor nor her proofreader can afford to spend hours on the telephone or in long email exchanges with you.]

We promise to make every effort to produce a newsletter we all can be proud of. Here's hoping the Breeze will continue its long history as but one example of our famously vibrant, "engaged" community of Park Point!

Respectfully, Natalija Walbridge and Ellen Dunlap

The Breeze

Park Point Community Club
P.O. Box 16326

Duluth, MN 55816-0326



Park Point Resident

Numbers you can use

Got (non-emergency) issues you'd like to discuss, but don't know whom to call?

Here are some helpful contacts:

Lift Bridge Supervisor 728-3387

Community Police Officer: Craig Lindberg 730-5727 clindberg@duluthmn.gov

Parks Maintenance Division: 730-4491 (after hours 730-4150)

Dog issues: clane@duluthmn.gov

City Councilor Sharla Gardner: 724-4701 sharla.gardner@gmail.com



WWW.DULUTHWVP.COM