



The Breeze *of Park Point*

Lafayette Edible Garden

We will not have our usual potluck dinner in August because we are helping to host the Park Point National Neighbors Night Out event on August 5th.

Park Point

Community Club Meeting

The August Meeting of the PPCC will be held at 6:30 at the Coast Guard Base on 12th Street. Parking for the group will be on the base. We will tour the search and rescue facility and view the ships and boats at the facility. We will hold a short business meeting.

Park Point Garden Club

August 28, 2014

7:00 PM

Contact Diane Gould 727-4067

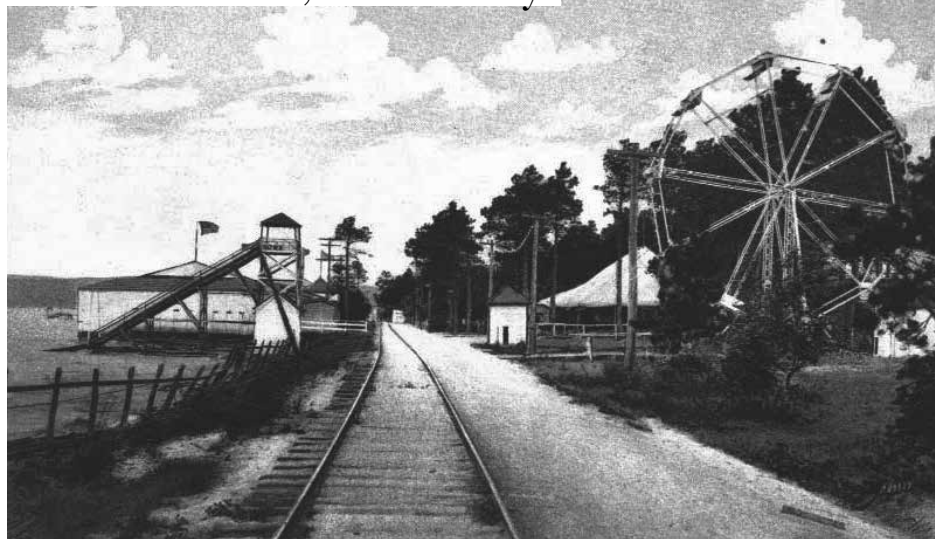
Neighborhood Night Out

Tuesday, August 5th

6:00-8:00 PM

Lafayette Community Center
and several other
neighborhood venues

Minnesota Point, White City



White City is the common name of dozens of amusement parks in the United States, the United Kingdom, and Australia. Inspired by the White City and Midway Plaisance sections of the World's Columbian Exhibition of 1893, the parks started gaining in popularity in the last few years of the 19th century. After the 1901 Pan-American Exposition inspired the first Luna Park in Coney Island, a frenzy in building amusement parks (including those to be named White City, Luna Park, and Electric Park ensued in the first two decades of the 20th century.

Like their Luna Park and Electric Park cousins, a typical White City park featured a shoot-the-chutes and lagoon, a roller coaster (usually a figure eight or a mountain railway), a midway, a Ferris wheel, games, and a pavilion. Some White City parks featured miniature railroads.

[http://en.wikipedia.org/wiki/White_City_\(amusement_park\)](http://en.wikipedia.org/wiki/White_City_(amusement_park))

(Historic photos and research provided by Natalija Walbridge)

PPCC Special Meetings Regarding Street Ends

PPCC resolved on July 17, 2014 "to hold a special community club meeting to discuss and gather information on legal issues on street ends. The group will meet in the next month."

Due to summer vacations and school starting, the Special Meeting(s) will be held during regular PPCC monthly meetings on:

September 18, 2014 & October 16, 2014

The purposes of the special meetings will be to inform ourselves about the legalities regarding street ends and public access, and to listen to each other's perspectives.

Thanks,

John Sargent, Judy Dwyer, Lyn Clark Pegg, and Bill Long

The mission of the Breeze is to serve the community by:

1. Publishing the minutes and financial statements of the Park Point Community Club.
2. Informing the community of upcoming meetings, events, happenings and projects.
3. Providing a forum for Park Point residents to air their concerns.
4. Sharing the history, stories and anecdotes that make Park Point a unique place to live.

The Breeze

Editor: Natalija Walbridge
Submissions for the August
issue are due by 8/29/2014.

Send to:

ppbreezeeditor@gmail.com
OR 2311 Minnesota Ave.

**Park Point Community Club
Officers:**

President: Dawn Buck
parkpointcc@gmail.com
525-1764

Vice President: John Sargent
3740 Minnesota Ave
763-276-8556

Secretary: Deb Strange
3632 Minnesota Ave
343-5370

Treasurer: Al Robins
722 Minnesota Ave.
720-6518

Committees:

Art Fair:

Carla Tamburro
218-428-1916

coordinator@parkpointartfair.org

Rummage Sale:
Please volunteer!

Environmental:
Dick Gould 727-4067

Hospitality:
Diane Gould 727-4067
Ted Buck 525-1764

Lafayette Square Rentals:
Missy Steichen
218-208-9545
ppccdhlh@gmail.com

The Postcard: Dawn Buck
parkpoincc@gmail.com

Sunshine: Pam Griggs
218-260-6032
pamgriggs101@gmail.com

Park Point Community Club
P.O. Box 16326

Duluth, MN 55816-0326
www.parkpointcommunityclub.org

From the PPCC President

Hi Neighbors,

Here is our Community Club's mission statement; it is in the signature block in the emails that I send out, "The purpose of the Club is to work for the betterment of the Community and the welfare of its residents."

Once again, we may have the opportunity to speak up and provide ideas on the topic of bay and lake access. At last Tuesday's discussion on the City's proposed Tier 2 accesses on Park Point, Keith Hamre of City Planning and Sharla Gardner, District 3 City Councilor, conceded that a one-year moratorium on designating future policy for "paper streets" would be recommended to the City Council until additional research could be accomplished. Hamre and Gardner suggested that the PPCC and the PP Neighborhood Street End Coalition conduct the research and come up with recommendations for locations of amenities at access points.

The Community Club is currently working on this topic via resolution. Several members are putting together the special meeting on street ends that was approved by the membership at the July meeting. Thank you to the volunteers working on the programs. Please watch for more information on our website, parkpointcommunityclub.org.

At the discussion last week, five residents who live on or own rentals on three of the sixteen proposed Tier 2 accesses spoke up about concerns with parking problems that would arise with increased use of their street ends. Most residents voiced their frustration that the existing "Tier 1" accesses need significant upgrading before additional access points are designated. Several residents expressed the need for Tier 1 type amenities (bathroom & garbage/recycle bins) at the Bridge entry, the "gateway" to the beach on property owned by the Corps of Engineers. Councilor Gardner agreed to bring those suggestions forward to the City Council. Kathy Bergen from Parks and Recreation is aware of the many improvements needed and is working on a means to accomplish the upgrades to the park system.

The underlying outrage from those in attendance seemed to come from two camps- Park Pointers who don't want public access on street ends near them and those Park Pointers who value access on all street ends. I have heard from Park Pointers who don't trust Tier 2 intentions from the City, as they absolutely do not want any street ends vacated. They are frustrated that City Planners are still referring to Park Point water access points as useless and are considering removing public access options for current residents as well as future generations. The City Planners seem not to acknowledge the authors of the Comprehensive Plan, who concluded that public dockage on the harbor side, " .. is interpreted to mean that the public has access to the harbor-side street ends for launching boats." These concerns are naturally divisive as some people would gain private land, while others will need to accommodate public access adjacent to their properties, if the Tier 2 plan is implemented under the current proposal.

From the PPCC President, continued

Common ground may be possible as Patricia Kuszler, spokesperson for the Park Point Neighborhood Coalition, did say she tended to agree with another Park Pointer's viewpoint of simple pedestrian pathways at all rights of way vs. selection of several rights of way for upgrades and additional promotion. Perhaps this is the beginning of some common ground between differing viewpoints.

Trust issues with the City were also mentioned in the discussion. Last week, I received confirmation that in 2008, despite assurances from City Administration and Planning, a bay lot just past 4500 Minnesota Ave. was sold off, along with a large beach side parcel. You may recall this highly contentious land sale of several lots down in the Oatka plat that Park Pointers believe to be recreational land. In fact, the City recently rezoned that land as "Park," so I am not sure how that will affect the status of the private property sold in 2008. How do these types of transactions and communication breakdowns affect our trust levels?

Bigger picture: Here are just a few more questions that come to mind:

- Why does it seem that the Park Point Small Area Plan contains such divisive components?
How did this happen?
- How can "trust issues" with the City be improved?
- What effect does jeering and heckling city staff and community volunteers have on our greater community?
- How can our neighbors feel comfortable and safe speaking up and joining the conversation when they have felt bullied and threatened by other community members?

I feel strongly that the betterment of our community begins with kindness and respect. I am hoping that as the conversations continue, you might consider how you define your contribution to our community through your words and actions.

Loving Park Point every day,

Dawn & Klaus (canine companion)

PS: Please remember that extra trash bag on your walks. Thank you!

Lafayette Rentals

Lafayette is a great place to hold weddings, reunions, parties, workshops, etc...

Rental fees are as follows:

up to 50 people - \$100.00

50-100 people - \$200.00

100-125 people - \$300.00

There is a damage deposit of \$100.00, refundable after cleaning & inspection.

Hours available are 8:00 am - 10:00 pm

Contact: Missy LePage at 218-208-9545 or by e-mail at ppccdlh@gmail.com



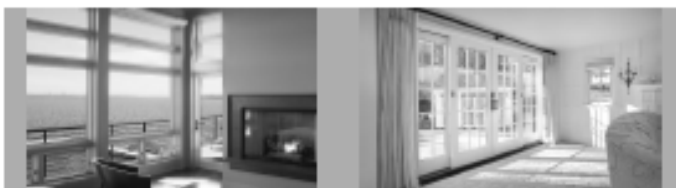
**LAKE SUPERIOR
STORAGE**

Safe, HEATED STORAGE UNITS
CARS | BOAT | RV
MOTORCYCLES | CAMPER

CONVENIENTLY LOCATED 5 miles from
LAKESIDE along MN-61 Expressway

Call Dale Sola: 218-348-1503 or visit
LAKE SUPERIOR STORAGE.COM
for details and sizes available.

IMPROVING LAKE VIEWS SINCE 1992



www.heritagewindow.com
715-394-7390

Heritage 
Window & Door

Duluth-Superior Sailing Association

www.SailingForAll.org

(218) 391-5521

Join our
Sunday afternoons
at the races



Proudly hosting
D21 Laser Regatta
August 7-8

Youth, Adult, Group, and Private Lessons
Weekly Races, Advanced Sail/Race Coaching
Community Sailing

We're on Park Point, next to the public boat launch.

EXTENDED BY POPULAR DEMAND!

Eating fit!

**A healthy serving of
healthy servings**



Thai Chicken with
Sesame Dressing

Due to the overwhelming responses to Eating Fit, it is now going to stay on the main menu! Enjoy the flavors of Green Mill and be true to your commitment to eat healthy. Counting fats, calories or even dietary fiber? The Green Mill Eating Fit menu features healthier alternatives – many that meet the requirements of today's most popular diets.



340 Lake Ave ★ Duluth ★ 218-727-7000

Remembering Park Point's
Storm Chaser and Film Producer

Alex Sahlberg

August 22, 1986 - April 13, 2005



I want to tell you something
so there will be no doubt,
you're wonderful to think of,
but so hard to live without,

Legal issues are too important to handle yourself!

Consult



**Larry L. Leege
Attorney At Law**



Primary areas of practice include:

Real Estate, Estate Planning, & Business Planning

Seller/Buyers
Deeds/Contracts/Purchase Agreements
Landlord/Tenant
Wills/Trusts
Power of Attorney
Health Care Directive
Transfer on Death Deeds
Pre-Nuptial Agreements
Corporations
Partnerships
LLC's

*Real Property Law Specialist. MSBA certified
Available at your home or mine

Larry L. Leege, P.A.
218-831-0438
Park Point Resident
Leegepa@brainerd.net

Attention Pointers:

SECURE STORAGE ON THE POINT!

AT THE "S" CURVE ON 13TH
ON THE BAY NEXT TO THE COAST GUARD STATION

8'x8'x40' 2560 Cubic Feet of Storage
Weather proof secure shipping container storage
Conveniently located on Park Point

Located on 13th and Bay at the S curve



Rent as low as \$100/month
Quarterly, Annual and Semi-annual available

Your Lock. Your Key.
Bayside Boatworks
(218) 723-1280

Park Point Community Club Meeting: July, 2014

The Park Point Community Club monthly meeting was called to order at 7:01pm on July 17, 2014 by Club President Dawn Buck. The civility checklist was discussed. It was moved and seconded to suspend the meeting for a presentation from the St Louis River Alliance. Bill Majewski showed efforts to protect and restore the St Louis river, including shoreline conservation and wetland protection. The Plight of the Piping Plover talk also showed efforts to encourage the return of the Plover to Park Point beaches. Special guest, author Marie Zhuikov spoke about her new book "Plover Landing" set in our area. Break in the meeting at 7:40pm

Meeting reconvened at 7:48pm – Communications read from the fire chief John Strongitharm – communicate days we will need fire staffing on PP. Discussion about excessive speeding by Fire and Police – let the City know your concerns by letter or email.

June 2014 Minutes – A motion was made by Judy Dwyer to approve the minutes as they appear in the Breeze. Pam Griggs seconded the motion.

Treasurers Report – Al Robins

Beginning balance

July 2014 – PPCC – 48,454

Art Fair – 32,014

Total – 80,468

Summer youth money is in, grant money will go out to pay bills over the next few months.

Standing Committee Reports:

Art Fair – Carla Tamburro

It was a good Art Fair but weather hurt attendance Sunday. Artist surveys are still coming in, but audience surveys are all in now. There will be a meeting 7/21/14 where survey results will be shared and 2015 planning and promotion will start. There should be a positive balance from this year which should carry over to 2015. Thanks to the 60 volunteers who made this year a success.

Sunshine Committee – Pam Griggs

Four cards sent out this month – thank you cards to Sheryl Robins, Charlene Shimmin & Dave Lavamaki, and one sympathy card.

Youth Committee – Judy Dwyer & Liz Makay

PP youth were featured in Lake Superior Magazine & the brochure. The big Pizza Party is 8/7/14 at 11:30am and all are welcome to attend.

Hospitality Committee – Diane Gould & Ted Buck

Thanks for the ice cream sundaes on a hot night!

Rummage Sale - ?

Still in need of one or two people to chair this committee – there have been no volunteers.

Environmental Committee – Dick Gould

Trees are all doing well thanks to the weather this year.

Watch committee – That's us

Discussion on many issues with the consensus being keep you eyes open in the neighborhood for suspicious activity. Officer Lindberg reports two properties are being closely watched. The Neighborhood Watch needs volunteers, walkers, bikers, etc. Conversation regarding bridge lifts not on the ½ hour schedule. Dick Gould will call the bridge to look into this.

Old Business:

Neighborhood Night out – no volunteers to chair, so Edible Garden will help. Everyone welcome and please bring a dish to share. Second vote on \$500 for Neighborhood Night Out at Lafayette. Dave Poulin made the motion and it was seconded by JC Curtis. Membership approved with all Ayes.

New Business:

Executive committee discussed moving our monthly meeting to another night. The 3rd Thursday is the City Council planning meeting, so our councilor cannot attend the PPCC monthly meetings.

Motion made by Dave Poulin- "Review the bylaws and consider moving the meeting to the 3rd Tuesday of the month". Seconded by Ted Buck. Group discussion. Motion amended to "Establish a bylaw review committee to review the bylaws and this review shall be finished 3 months from today's date". Membership vote Ayes, one No.

Motion by Brian Nelson- "PPCC would immediately and in written form poll all members who would volunteer their street ends as access points for Tier 2, with a yes or no answer". Group discussion. Motion made to table discussion by Charlene Shimmin. Seconded by Ted Buck. Vote by the membership – majority vote to table the motion until next month's regular meeting.

Motion made by Lynn Pegg – "For a special Community Club meeting to discuss and gather information on legal issues on Street ends. This group will meet in the next month (ASAP)". Group discussion. Seconded by Ted Buck. Vote by the membership – all ayes. Motion to adjourn by Ted Buck – 9:15pm

Respectfully submitted
Deb Strange



Randy "RJ" Julian

842 Minnesota Ave. 218-341-2720

julianboatworks@gmail.com

www.julianboatworks.com

PARK POINT BOOK LOVERS:

There is a credit in the name of PARK POINT at the Amazing Alonzo Paperback Book Exchange at 1831 E. Superior Street. Just mention that you are from Park Point to receive a 30% discount.

Our Lady of Mercy Catholic Church

2002 Minnesota Ave 722-3078

Fr. Peter Muhich and Fr Elias Gieski

Announcement

Recently the formal beginning of the clustering of St. Mary, Star of the Sea/Our Lady of Mercy and the Cathedral commenced. Clustering means that parishes remain distinct (don't merge) but share priests and look for ways to work together to proclaim the gospel. Fr. Eli and Fr. Peter are looking forward to getting to know the parishioners downtown and on Park Point.

They will be listening and learning in the coming months and they do not foresee any big changes in the first year of our clustering.

Fr. Eli and Fr. Peter will be alternating on a weekly basis between the parishes. Fr. Noel Stretton will be living in the rectory at OLM and providing part-time ministry to our parish cluster. Fr. Noel will be giving pastoral care to the nursing homes, Franciscan and Bayshore, and will celebrate the 12:10 mass on Fridays at St. Mary, Star of the Sea. He will also be celebrating one Sunday Mass in the cluster each week. Fr. Noel has a long-standing commitment to provide a Mass at the Federal Prison in Duluth which he will continue. Fr. Dan Dahlberg will celebrate the 12:10 mass at St. Mary, Star of the Sea on Mondays.

Mass 8:00 AM every Sunday with confessions at 7:40

www.sfhs.org



*Franciscan
Health Center*
On Beautiful Park Point

*24/7 Full Service Skilled
Nursing Care & Rehabilitation*

Caring is what we do - naturally!



3910 Minnesota Ave., Duluth • 218-727-8933

Is a **Reverse
Mortgage**
something *you*
should consider?



A checklist to see if a **Reverse Mortgage** might make sense for you.

- ☒ Could you use extra cash or monthly income?
- ☒ Do you have quite a bit of equity in your home?
- ☒ Do you want to remain living in your home for as long as possible?
- ☒ Are there repairs or improvements you would like to make to your home?
- ☒ Are there extra things you would like to do for yourself and your loved ones?

If you are 62 or older, find out how much tax-free cash you qualify for. Call WesternBank - your locally owned hometown bank since 1904.



WesternBank

723.1000
www.Wbduluth.com

WEST DULUTH OFFICE • 201 North Central Avenue
DOWNTOWN OFFICE • 202 West Superior Street
MILLER HILL SUPER ONE OFFICE • 5401 Burning Tree Road



Lafayette Community Edible Garden



Pinch hitting for bee-keeper Jamie Harvie, who was to have been our speaker at the July 21st Monthly Potluck Dinner, was Jonathan Otis, co-owner of Lake Superior Honey Company. Jonathan has been a bee-keeper for seven years. Lake Superior Honey Company specializes in free-foraged, single-location honey that allows you to taste the honey that was produced in the neighborhood. The most famous location of their bees is Glensheen Mansion and the closest is their backyard in Woodland.

Jon has helped write an ordinance to allow honey bee keeping in the city of Duluth and has spoken to many groups about the importance of pollinators to the health of our communities. Knowing that bee populations are necessary pollinators of plants that humans depend on for food, Jon is concerned about pesticide use that could damage our bee populations. He promotes a “Bee Friendly Duluth” petition that calls for banning the sale and use of Neonicotinoid pesticides and items containing these pesticides. <http://petitions.moveon.org/sign/bee-friendly-duluth>.

Lake Superior Honey Company regularly collaborates with local small business to further their reach and recently completed a honey tasting guide which should be available by the end of the summer. www.lakesuperiorhoneycompany.com.

We will not have our usual potluck dinner in August because we are helping to host the Park Point National Neighborhood Night Out event on August 5th.

Upcoming Events:

Monday, September 22, 6 to 8 p.m. Monthly potluck dinner. Angela Krick is scheduled to teach us about fermenting, an activity she and her family have been doing for several years. She teaches fermenting classes at Whole Foods Co-op.

Friday, October 24 (?), Our Annual Harvest Dinner with the Duluth Community Garden Program. Time and place to be confirmed. We will celebrate BEANS, this year’s One Vegetable One Community initiative.

Sunday, November 16, 5 to 7 p.m. Monthly potluck dinner. Chad Johnson will make a presentation on what permaculture is and reintroduce us to Sepp Holzer and his practices. Chad will share his projects at his Spirit Mountain Farm and premiere Sepp’s new DVD, Desert or Paradise.

**Come to Lafayette, Tuesday, Aug 5, at 6 p.m.
to celebrate our beautiful
Park Point neighborhood!**

A few of our awesome cooks are fixing pulled pork so be prepared for a delectable feast. Please bring a potluck dish and your words to add to the statement on a poster “The best thing about living on Park Point is”

It would be good if you also brought a folding chair so you can be comfortable eating and listening to music by Jamie Ness. There will be games for kids too!

Coral McDonnell

Recently, I commented to a fellow Pointer that I had not seen an eagle since last fall. However, at 1:30 in the afternoon on July 17 I had a heart-warming surprise in triplicate. It began with a routine check of the sky and water of the bay. Suddenly, to my left, a mature eagle came into view, and then caught an updraft to rise quickly. When reaching about a thousand feet, it began soaring over the bay. Within a minute or less another of its kind, also an adult, came out of the east. A moment later, a third eagle -white head and tail feathers gleaming in the sun- joined the three bird "air show." Though lasting but a few minutes, it was the high point of my day.

I like to think they would have gladly swooped down in a power dive to pluck a big fish from the surface of the bay... but that would have been asking a bit too much. No matter how often I see this magnificent creature, it's always a thrill.

For the benefit of recent Breeze readers who missed the original story more than a year ago (and for those who forgot my favorite account of an eagle on the Bay) I would like to repeat it. Using the word "astounded" is an understatement in describing my reaction when seeing a half-submerged mature eagle standing in the water about ten feet off the sandy shore. If I could apply the term to a bird, I would say it seemed to have a troubled look on its face...a sort of "what do I do now?" expression.



With years of observation and study of wildlife behind me (but never claiming to be an expert), I was quickly able to figure why it was standing, wings spread wide, in about a foot of water here at the end of 19th street. It had pounced on a huge fish, sunk its talons deep into its flesh, and then found it couldn't get it airborne, especially with the weight of soaked feathers. I was spellbound with its solution.

It spread those massive five foot wings, formed them into a circle and pulled the water toward its body...repeating that crude form of swimming until it reached shore with its catch. Wasting no time to rest or dry off, it gorged itself on what appeared to be fillet of walleye, as a pair of thieving crows crowded in from either side and snatched a few scraps. It seemed to be only about ten minutes before the carcass was reduced to a pile of bones.

After ponderously lifting off the sandy beach with a belly full of fish, the eagle barely made it to a birch tree on the north side of Hearding Island and perched contentedly for the rest of the morning. Sound like the story is a figment of my imagination? Not if you look at the video I shot from my window!

Finally, I want to thank the many Point residents for the beauty they provide us with fabulous flower and shrubbery displays they plant close to the roadway...It's such a great pleasure to admire them in driving as far the Recreation Area. I haven't seen any other neighborhood in the city that can match it...And I always pull up to take in the beauty of the Park Point Garden Club multicolored display.

Park Point Garden Club

Fertilizing a Sandy Base

We live on a unique land base: sandy and water with fish. When asked how to fertilize with these conditions, Ellen Dunlap said "Fish emulsion." My father, the fisherman, used to throw guts and all into the healthy lilac bushes, so this made sense. However, Ellen said she first had to have dirt hauled in for the surface of her garden. Despite all the fish in the water, not all of us fish.

Instead, you could purchase organic fish emulsion concentrate from any garden center. Fish emulsion can also be used as a lawn fertilizer in early spring and to feed leafy green vegetables, due to its higher nitrogen content. The NPK ratio for fish emulsion is generally 5-3-3. NPK : 'N' stands for Nitrogen, which is responsible for strong stem and foliage growth; 'P' stands for phosphorus, which aids in healthy root growth and flower and seed production. 'K' stands for potassium, which is responsible for improving overall health and disease resistance. Fish emulsion can have a strong fishy odor, but deodorized fish emulsion is commonly available as well. Next meeting is August 28. Please call President Diane Gould, 727-4067, for details. Visitors always welcomed!



Minnesota Point Historic Views

1887



1939



1948



1972



Duluth Rowing Club's International Regatta

The Duluth Rowing Club's annual International Regatta was held on the Club's site on the bay side of Park Point's Superior Front Channel July 12th. Approximately 300 rowers -- juniors, open, and masters - from ten Midwest American and Canadian clubs-, attended this year's event, with thanks for just about perfect rowing conditions, (including calm water.) The Minneapolis Rowing Club finished first with 300 team points, Duluth second with 261, the Minnesota Boat Club (St. Paul) third with 185.

There were 29 separate events, men and women, from single shells to eights, juniors (through age 19), open, and masters (ages 23 - ?). Duluth Rowing took first place in master men's quad, junior men's eight, mixed-master quad, master men's double, and master women's straight four. Numerous Duluth crews placed 2nd and 3rd in many events.

The DRC would like to thank the residents of Park Point for their patience with rowing crew, spectator, and race official traffic on that busy Saturday. The final DRC hometown rowing event of the season is the annual "Death Row" 27 kilometer row from the Boathouse, up the St. Louis River, ending in Fond du Lac on September 14th. The complete rowing season continues with DRC junior members competing July 26 at the "Tops and Bottoms" regatta in Kenora; many Club members returning to this year's Northwest Rowing Championships August 8 & 9 in Kenora, Ontario; DRC master rowers competing at the Master National Championships in Grand Rapids, MI August 14 - 17; 5 kilometer river racing at Head of the Mississippi in Mpls. in early October; and then to Boston's Head of the Charles October 18 & 19. Residents living on the Bay side of the Point will see crews out practicing at 6:00 a.m., 8:00 a.m., and late afternoon-early evening throughout the rest of summer and into the fall.

And finally, many thanks for those contributing shiny paper to the Club's dumpster. This is a good source of funding for the many programs run by the Club. Progress on building a new boathouse is still proceeding, with application of permits, engineering, and architectural drawings still in preliminary stages. Keep tuned for more to come!

Tom Rauschenfels

Here are some photos of just a few of the many Duluth Rowing Club crews:



Park Point Summer Youth Program

Wow!, Where has the time gone? It seems like only yesterday we were unpacking for the summer and now we are slowly starting to pack things up.....

It's been a fun filled action packed month since the last up date, stopping only long enough to get sun-screened and eat lunch!

We have perfected our pizza making skills with pizzas we made with the Kids Garden, being very creative with the topping choices! The swim teams have shivered in Lake Superior and the Mermaids have given up their tales for the nice warm sand! The inner tubes have been put to good use as the kids have become water caterpillars.

Our PVC Pipe has made many waterways for our Sand Cities and have become the center piece for fountains. The cooks have been perfecting their cuisine for their restaurant on the Playground, tantalizing our taste buds with the most unique dishes.....a bit grainy but very creative.

The craft supplies have dwindled as our artists have been busy. Paper plates, glue and anything else have been the most popular. We have filled our plastic Easter Eggs with beautifully colored homemade Silly Putty, made with Borax, water and glue. It has been a hot item and we are fortunate it does not permanently stick to clothing.

We have modeled Sand Castles at the Sand Modeling Contest and Busted Gutters at Incline Station. We became News Anchors at KBJR and tried our best to master the Weather Map. We have toured the Lake while cruising on the Vista, pretending we were cruising on the Titanic. We celebrated the 4th of July with a pot luck picnic, being treated to 'Tacos in a Bag', Root Beer Floats, homemade Caramel Corn and many sweet treats.

We have picnicked in Canal Park while watching the boats, donating our crumbs and bread crusts to the Sea Gulls. We picked out our favorite dogs at the Dog Show and have seen all the work it takes to get the dogs ready. The girls organized a 'Beauty Day', having cucumber facials, nail painting, hair creations and much more! The engineers have built a Ferris Wheel Race Track out of K-nex and have perfecting the many twists and turns while our train is chugging through Lego City. We have seen our Purple Martin friends, gawking at how big the babies have grown.

We have Paddled Boarded at the end of the Point with our friends from North Shore SUP and have decided we need a few for Lafayette! We have done so much and still have much more to do.....tomorrow we are learning about Piping Plovers and Tubing in the Lake and Thursday we will be Busting Gutters at Incline Station.....stop down and join in the fun: if the door is open, we are there!

Joy Fouts

<http://mnopedia.org/structure/duluth-incline-railway>

Incline Railroad Chronology

1891

The Duluth Incline railway opens on December 2.

1892

The Beacon Hill pavilion at the top of the incline opens on July 4.

1901

The Beacon Hill pavilion burns on May 28, and the Incline railway temporarily closes.

1902

The Incline reopens on January 1 with a single car and counterweight.

1911

The Incline reopens with two cars and relocated stations on June 11.

1939

The Incline railway stops operating on September 4.



Community...such a simple concept, yet not so easy to define. As Pointers, we all live in what may appear to off-islanders as a monolithic community. "Those cantakerous Park-Pointers!" they say. To some who live "uphill", we appear to be insular, wealthy (HA!)..."NIMBY's," according to the phrase of the day. We genuinely (and honestly, I would argue) believe that we possess none of those qualities. We do, however, tend toward an assumption of homogeneity, the erroneous belief that we are One.

As of this writing, there abound along our little island some contradictory viewpoints. You know them: 180 degree differences regarding access v. protection of rights to privacy (abeit a striking cohesiveness when it comes to meeting the Arbiters of Change), a campaign to remove an elected official v. loyalty to a long-serving politician...genuine differences of opinion among the group. The Family is having a bit of an awkward moment, to say the least. A family that - on the whole - generally gets along very well. As well-fed, well-dressed (a condition of comfort, not fashion!), middle class midwesterners, we enjoy the comforts that come with finding ourselves generally amidst our own kind. Our polling statistics may lean to the Left (with notable exceptions), the Neighborhood Night Out organizing group may have puzzlingly selected pork as the signature menu item for its picnic (think about it, folks...what's wrong with this picture?), yet - despite our presumed homogeneity - we are finding that some of our differences, however subtle, seem to be confronting us face-to-face.

This brings me to thoughts of Community...what constitutes community, who defines it, what qualities combine to make a community? Perhaps your definition is very local: You drive your ailing neighbor to a doctor's appointment, take in her mail when she's on vacation. You attend PPCC meetings as often as you can stomach, send in your annual \$5 to cover costs. You make a point of meeting and welcoming your newest neighbor. You sweep up glass in front of your home, saving the tires of local bicyclists. You deliver the Breeze to your 3-block section. Or perhaps you view Community more globally: You donate money to an international group that funds surgery performed in developing countries; you spend your vacation dollars not snorkeling in the Caribbean, but rather digging a well in a village whose residents previously walked several miles in order to procure potable water. Large or small, all of these actions could certainly fall under the category of "community."

I proffer this: What defines you as a part of your community? Do you take care to remove leaves and other detritus from your street gutters? [Water specialists routinely mark this as the No. 1 contributor to the introduction of phosphorous into the Lake...far worse than fertilizer (inorganic or organic) or washing your car in the driveway.] Do you trim your shrubbery back to meet the legal limit (2 ft. behind the sidewalk), or do passers-by tear their coats on the thorns, or (worse) get forced into the pathway when walking by your home? If you're a "snowbird," do you take care to hire someone to shovel your sidewalks in your absence, so that your summertime neighbors are not forced into the street in the pathway of passing autos while you're away? [And yes..we do talk about you when you're gone!] However petty these small items may seem, I offer them as small examples of obligations to one's community. I'm sure you have your own definitions of what constitutes a Responsible Member of the Community. And so, I challenge us all to either broaden - or narrow - our private definitions of "community." And to be perhaps a little kinder to one another once we've determined our own parameters. Yours truly included.

Ellen Dunlap

Poison Ivy

If you have a poison ivy problem there is a product I found called, TECHNU; it works like magic, washing away the poison with one application. (Available at local pharmacies.)

There is also a recipe for a cleanser that works as well. Combine a tablespoon of Dial dish soap with 2 table spoons of olive oil and an equal amount of water. Mix well and apply, rub it on and wash it off. Magic!

Dick Gould

Save Lake Superior Association

PARK POINTERS are invited to the annual meeting of the
SAVE LAKE SUPERIOR ASSOCIATION Sat., Sept. 20, 2014 9:00 AM TO NOON.
Place: Lafayette Square Park (3100 Minn. Ave.) on Park Point, Duluth, Minnesota

9:00 AM: Le Lind, President, SLSA. Introduction of Speakers, and Presentation of first Members' Award for Outstanding Efforts.

9:30 AM: Liz Minor, Professor, Department of Chemistry and Biochemistry and Large Lakes Observatory, University of Minnesota Duluth

Lake Superior Studies at the Large Lakes Observatory: The Large Lakes Observatory (LLO) studies large lakes throughout the world. This talk gives a brief overview of LLO's on-going projects in Lake Superior as well as highlights from an investigation of the impacts of the 2012 Solstice Flood on the lake. In Minnesota, including the Lake Superior watershed, precipitation patterns are shifting toward fewer and more extreme storm events, such as the June 2012 flood. Analyses in the western arm of Lake Superior showed that the 2012 flood brought large amounts of sediment and colored dissolved organic matter from the watershed into the lake. There was initially a ~50-fold spike in the total phosphorus concentrations (and a 5 fold spike in soluble reactive phosphorus) in flood-impacted waters. This disappeared rapidly, in large part due to sediment settling and did not lead to an increase in chlorophyll concentrations at monitored sampling sites. Instead, lake phytoplankton appeared light limited by a surface lens of warm, brownish water enriched in colored dissolved organic matter. This light-limitation persisted for 2 months after the flood event itself. Researchers at LLO are studying how this and other phenological and episodic changes in the Lake Superior region will affect in-lake processes.

10:00 AM: Professor John Pastor, Dept. of Biology, University of Minnesota Duluth

The Effects of Climate Change on Minnesota's Forests: Minnesota is at the intersection of three major biomes, the Prairie, the Eastern Hardwoods, and the North Woods. The boundaries separating these biomes have always been and will continue to be determined by climate. As the climate continues to warm, these boundaries will shift, probably within the lifetimes of my son and grandson. Predictions made twenty-five years ago regarding the dismantling of the North Woods with a warming of about 2 degrees Centigrade are coming true. These changes will affect not only the tree species which comprise the North Woods but also the loons, moose, beaver, trout, and other species that live in this biome. A strong message needs to be sent to elected officials and those who wish to be addressed.

Submitted to the Breeze Editor by the Program Chairperson for SLSA, Gary Glass, 218-391-4242. 3215 LAS Duluth, Mn 55802

BROTHERS WINDOW CLEANING

+ carpet, floors & upholstery

PO Box 16846
Duluth, MN 55816
office 218-724-4641 | cell 218-393-4924
browin4918@hotmail.com
BrothersCleaningDuluth.com



Edina Realty.

SHINING THE WAY TO
YOUR NEW HOME!

Lynn Bentfield
Realtor, GRI

Cell: 218.464.3790
Fax: 218.728.7710
1515 London Road | Duluth, MN 55812
lynnbentfield@edinarealty.com
www.edinarealty.com



Duluth Native &
Park Point
Resident
23 years
of experience

The Breeze

Park Point Community Club

P.O. Box 16326

Duluth, MN 55816-0326



Park Point Resident

Numbers you can use

Got (non-emergency) issues you'd like to discuss, but don't know whom to call?

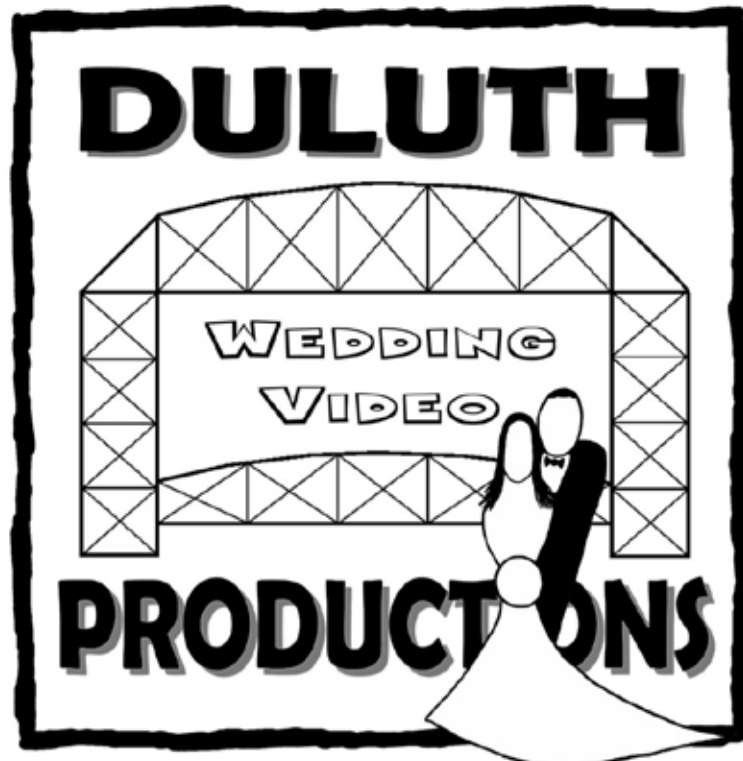
Here are some helpful contacts:

Lift Bridge Supervisor 728-3387

Community Police Officer Craig Lindberg 730-5727 Lindberg@duluthmn.gov

Parks Maintenance Division: 730-4491 (after hours 730-4150)

City Councilor Sharla Gardner: 724-4701 sharla.gardner@gmail.com



WWW.DULUTHWVP.COM