

The Breeze

OF PARK POINT

Vol. 40 issue 5

www.parkpointcommunityclub.org

May 2011

Calendar

**Park Point Community
Club Meeting**
May 19th, 7PM
At Lafayette

**Lafayette Edible Garden
Potluck Dinner**
(May 15, 5 – 7 p.m.)

Park Point Rummage Sale
June 10th & 11th

**Summer Solstice
Gathering in the Garden**
June 21st

Park Point Art Fair
June 25th & 26th

The mission of the Breeze is to
serve the community by:

- 1) Publishing the minutes and financial statements of the Park Point Community Club
- 2) Informing the community of upcoming meetings, events, happenings and projects
- 3) Providing a forum for Park Point residents to air their concerns
- 4) Sharing the history, stories and anecdotes that make Park Point a unique place to live

Smelting Tradition Continues



It's a far cry from the "glory years", when thousands of smelters descended on North Shore streams and Park Point beaches to scoop up the little silvery delicacies. The smelt numbers are greatly reduced – and the accompanying parties reduced even more. You've got to work for your smelt now. On the cold, breezy evening shown in these photos most of the seines were coming up empty – or staying rolled up on the shore. But for those who are persistent, coming back night after night, pulling those seines, there are still smelt to be found. I heard reports of 5-gallon buckets being filled.

Once, many of the smelt caught would wind up as bait for bigger fish. But new rules aimed at preventing the spread of the VHS virus prohibit their use as bait. So now their fate is mostly to be dipped in beer batter and deep fried crisp and tasty!



The Breeze

Editor: Alan Dartanyan
726-0110

Submissions

The deadline is June 2nd for the June 2011 issue. Please send submissions to Alan Dartanyan at breezeditor@msn.com by e-mail or deliver to 1540 Minnesota Ave.

Park Point Community Club Officers:

President: Dick Gould
3003 Minnesota Ave.
727-4067

Vice President: Liz Mackay
2233 Minnesota Ave.
722-1834

Secretary: Sheryl Robins
722 Minnesota Ave.
720-6518

Treasurer: Al Robins
722 Minnesota Ave.
720-6518

Committees

ART FAIR

Carla Tamburro
727-2661

Rummage Sale

Charlene Shimmin 722-6828
Dave Lavamaki 729-8925

ENVIRONMENTAL

Kinnan Stauber, 722-6255

HOSPITALITY

Diane Gould, 727-4067

LAFAYETTE SQUARE RENTALS

Missy Steichen 218-208-9545
ppccdhlh@gmail.com

S-CURVE SIGN

Dave Johnson, 722-9764

SUNSHINE

Pam Griggs
727-2158
pegriggs@clearwire.net

Park Point Community Club
P.O. Box 16326
Duluth, MN 55816-0326
www.
parkpointcommunityclub.org

Tree Planting!

Saturday the 21st, 10 AM. Let's meet near the end in the last parking lot before the airport. Bring a shovel, pail and a helper. We will be planting at different locations from 12th to past the airport. We will have 500 trees total. Our past plantings are really helping with the low water levels and big winds. HELP!

Thanks, Dick

From The President

A quote from the DNT 4/28/2011, "Days Gone BY, 4/28/91 Next month Eugene Shabatura of Park Point will give away about 2000 Seedlings to Park Point residents as a part of a 30-year neighborhood tradition. Shabatura took over the task from George Cruikshank seven years ago.

500 trees will be here about the first week in May. (probably already planted) Remember, "A single tree can hold up to a ton of carbon dioxide while exuding pure oxygen" Plant a few trees!

I am struggling with the IRS about the 501 C-3, lots of paperwork! But it seems to be coming along. The IRS said, "it would take about 90 days." That was Feb. 12th!

Shovelers needed on beach access walkways at 12th, Lafayette and 48th. The low water and wind is causing much more than average drifting sand.

Oops, got to go, just heard May Day!

Dick

This Just In!

The Club needs a pro bono or volunteer atty. to file a 501 C-3 application to the IRS for us. Call Dick at 727-4067.

Thanks for the Donation

The Park Point Community Club received a contribution from a pilot at Sky Harbor Airport towards the tree planting program on the Dunes leading to the airport. He appreciated our efforts and the good results.

Lafayette Rentals

Lafayette is a great place to hold weddings, reunions, parties, meetings, etc...

The Rental fees are as follows:

up to 50 people - \$100.00
50-100 people - \$200.00
100-125 people - \$300.00

There is a Damage Deposit of \$100.00, which is refundable, after cleaning & inspection.

The hours available are from 8:00 am until 10:00 pm

Missy Steichen is our rental agent. You can reach her by phone at 218-208-9545 or by e-mail at ppccdhlh@gmail.com

Making house calls to provide computer problem troubleshooting, computer setup, or personal tutor services. Providing \$99 design, setup, and hosting services for your personal or small business website. Check out www.Vitzki.com for more information.

Computer
calls:
ONLY \$20 / hour
+ mileage



\$99
websites !

FASTER at responding to your call than other more expensive companies, **MORE EFFECTIVE** than a sledgehammer, and usually **ABLE TO FIX YOUR COMPUTER** in a single, short visit...

"your computer superhero"

Ryan Novitzki • (218) 341-4948 • ryannovitzki@yahoo.com

St. Andrew's by the Lake Episcopal Church
www.standrewsbythelake.org 727-1262

Stop by St. Andrew's and get a Brat, Burger or Hotdog during the Park Point Rummage Sale. Doing so helps the Teens with their Mission projects - Animal Allies, Heifer, Kiva Loans, and Light House for Teens. It also helps fund some of their activities for the summer and fall. Thank you for your past and continued support

ROGATION SUNDAY June 5th, 9:45 am

Rogation Sunday is a time set aside to appreciate and recognize our dependence upon the land for our food and most importantly upon God for the miracles of sprouting seeds, growing plants, and maturing harvest.

The 'Beating of the Bounds' began in medieval England. Written maps were rare and each year a procession marked the parish boundaries, which were beaten with willow rods. The word 'rogation' means 'to ask'. We ask for God's blessings. The Rogation Procession moves from a recognition of the sacred earth - to hope for fruits from the earth and fruits of the Spirit in our lives (love, joy, peace, patience, kindness, generosity, faithfulness, goodness and self-control - Galatians 5:22)

The service begins inside with music, scripture and a 'visual homily', followed by the Procession outside, then inside again for Eucharist. A picnic will follow worship. There will be a bike ride to the end of the Point, and a bag lunch picnic - for any children and adults who wish to participate. All are invited!

Our Lady of Mercy
Catholic Church
2002 Minnesota Ave
722-3078

Fr. John Petrich,

HEALING MY AILMENTS

A man went to the hospital for a checkup. He was very depressed, and said to the doctor, "I look in the mirror and I'm a mess. My jowls are sagging, I have blotches all over my face. My hair is falling out. I feel ugly. What is it?" The doctor said, "I don't know but your eyesight is perfect." Many of us may be a lot like that man - plenty of ailments to complain about, but unsure what to do about it. Imagine if Jesus asked, "Do you want to be well?" meaning well physically, spiritually, and emotionally. How would you respond?

You *can* get well. Not by ignoring professional help when called for, but you can begin the healing process by taking the following approach to life: "I can't; God can; let God."

Father, I am aware of so many things wrong with me. Despite my efforts, little seems to change. Help me surrender to your divine love. I pray in Jesus, the Divine Healer. Amen.

Note: An Hour of Bible Study on the Point - Tuesdays at 6:30. Join us as we study the events encompassing the Resurrection of our Lord in Our Lady of Mercy Rectory. Sunday Eucharistic Celebrations Every Sunday at 8:00 A. M.

Is a **Reverse Mortgage**
something *you*
should consider?



A checklist to see if a **Reverse Mortgage** might make sense for you.

- ☒ Could you use extra cash or monthly income?
- ☒ Do you have quite a bit of equity in your home?
- ☒ Do you want to remain living in your home for as long as possible?
- ☒ Are there repairs or improvements you would like to make to your home?
- ☒ Are there extra things you would like to do for yourself and your loved ones?

If you are 62 or older, find out how much tax-free cash you qualify for. Call WesternBank - your locally owned hometown bank since 1904.

WesternBank

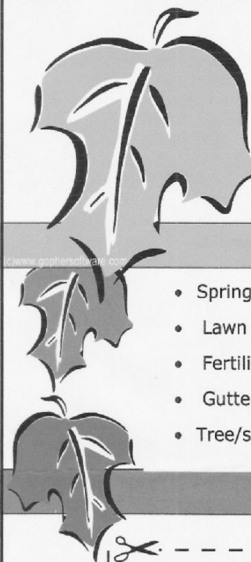
723.1000
www.WBduluth.com

WEST DULUTH OFFICE • 201 North Central Avenue
DOWNTOWN OFFICE • 202 West Superior Street
MILLER HILL SUPER ONE OFFICE • 5401 Burning Tree Road



ELITE LAWN SERVICE

We have been in business 3 years and have recently moved to Park Point. Our goal is to provide quality work to our new neighbors here on the point. Please call us, stop in at 3324 Minnesota Ave, or visit our website at elitelawnsduluth.com



Services

- Spring clean ups
- Lawn Maintenance
- Fertilizing
- Gutter cleaning
- Tree/scrub trimming

Offers

20%OFF! 20%OFF!

Spring clean up with Lawn service contract.
Elite Lawn Service
(218) 349-5013

Gutter cleaning with Lawn service contract.
Elite Lawn Service
(218) 349-5013

Reliable and affordable detailed work.

Call Us: **Elite Lawn Service**
(218) 349-5013

Insured - Free Estimates - Commercial Residential

EXTENDED BY POPULAR DEMAND!

Eating fit!
A healthy serving of healthy servings



Thai Chicken with Sesame Dressing

Due to the overwhelming responses to Eating Fit!, it is now going to stay on the main menu! Enjoy the flavors of Green Mill and be true to your commitment to eat healthy. Counting fats, calories or even dietary fiber? The Green Mill Eating Fit menu features healthier alternatives - many that meet the requirements of today's most popular diets.



340 Lake Ave ★ Duluth ★ 218-727-7000

Don't take legal issues into your own hands!



Consult



Leege Law!

Park Point's own legal counsel
Focus on

Land Issues & Estate Planning

Sellers/buyers

Deeds/contracts/purchase agreements

Landlord/tenant

Wills/trusts

Powers of Attorney

Health Care Directives

***Real Property Law Specialist.**
MSBA Certified

Also available evenings and weekends, your home or mine

Larry L. Leege, P.A.
3219 Minnesota Avenue
Duluth, MN 55802
218-831-0438
Larkan8@clearwire.net

Park Point Community Club Minutes

April 21, 2011

President Gould called the meeting to order at 7:05. Two correction were made to the March minutes, the spelling of Liz Mackays name and the Street concerns for Bayshore Health Center should have been ST. Louis Ave. not Lake. With the correction the minutes were approved.

Treasurer's report- Al Robins provided the following: Begining balance of \$59,000. March income was \$21,800 from Art Fair Fees, club rentals and memberships. March expenses were about \$3,400. Motion was made and seconded to accept the treasures report.

Committe Reports

Membership- Liz Mackay reported 236 memberships to date.

Breeze- Alan Dartanyan reported that this months issue was 12 pages due to the informative submission from our City Councilor, Sharla Gardner, regarding the recent zoning changes on Park Point.

Communtications Report- Dick Gould reported that the PPCC recieved a contribution from Don Macor toward the tree planting program on the Dunes leading to the Sky Harbor Airport. He appreciated the Clubs efforts and good results.

IRS has sent a response to the 501C3 request and is asking for more information. The attorney has agreed to review the information we will provide before it is forwarded.

President Gould and Joy Fouts met with Kathy Bergen from the City of Duluth's Parks and Recreation Dept. regarding the Summer Youth Program.

Old Business- Trees have been ordered and should be available early May. Volunteers will be need to plant the 500 trees. Watch the sign for days and times.

Pres. Gould is still working with the City of Duluth regard the lock changes at Lafayette to secure the building.

New Business- Summer Youth Program

Joy Fouts provided an overview and projected budget for the 2011 Summer Youth Program. The program will run from June 13 thru August 11th, Monday thru Thursday, 10 am to 4 pm. It is open to all children ages 5 thru 12 who reside on Park Point, relatives of Park Pointers and those "Grandfathered" into the program. Program is limited to 40 children.

Fees for the 9 week program are \$100 for the first child in a family and \$50.00 for each child thereafter.

Proposed funding needed for expenses is \$8,000. including but not limited to Youth Director and Co-worker, Special Events, Misc. Art and cleaning supplies and Sports Equipment.

A motion was made and seconded to accept the proposed \$8,000 budget. A vote was taken and approved. A 2nd vote will take place at the May meeting.

City of Duluth Parks & Recreation Commission Match Grant

Grants are available for up to \$2,000. A discussion to apply for the grant to carpet the downstairs of Lafayette was held. A motions was made and seconded to completed the paper work to persue the grant.

Volunteers are being asked to help shovel sand from the dune bridges. Dennis Hoelscher will be contacting the college who requires students do some community voluteer projects Those interested should contact Dick Gould at 727-4067.

Missy Stiechen, our rental agent has been busy. She had a list of available dates and asked that those interested in renting Lafayette should contact her asap. since dates are filling up quickly. She also wanted feed back on a samll non-denominational church who wants to rent Lafayette for services on Wednesday evenings and Sunday mornings from 10-1. These are days and times with limited rentals. Also the church agreed to hold services else where if there were conflicts with other rentals.

A motion was made by Dave Poulin to adjourn the meeting at 8:10.

30th ANNUAL PARK POINT GARAGE SALE

FRIDAY JUNE 10th AND SAT. JUNE 11th

8 AM ---- 6 PM Daily

It is hard to believe only 1 month until the big event.

We ask everyone living on Park Point to help make this event a success.

- 1. Have a sale. Even if it is just a few items.**
- 2. Invite your friends and family to come. We are sure many friends and family will have stuff they want to sell or just come down and shop.**
- 3. All food stands must be licensed by Health Department.**
- 4. All sales must be held on private property. No sales on the street, the curve or at Lafayette. If you see sales on public property please tell them to move. If you are having a problem please call Dave or Charlene**
- 5. YES the sale goes on in any kind of weather., we found out last year.**
- 6. Any questions: Call Charlene Shimmin or Dave Lavamaki or email parkpoint@clearwire.net**

This event is sponsored by the Park Point Community Club.

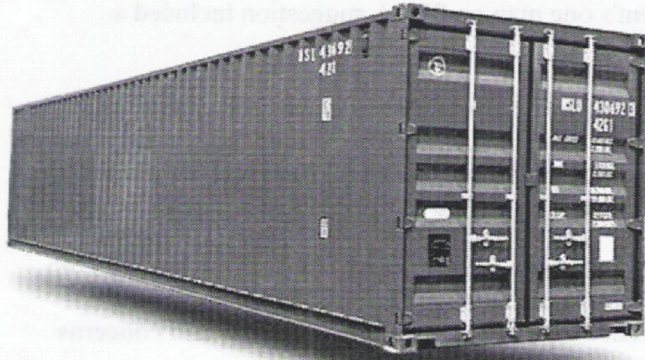
PLEASE NO SALES ART FAIR WEEKEND.....

KDAL RADIO 610 AM is COMING, Friday Morning June 10, 5 AM - 8 AM for the Park Point Garage Sale. Pat Cadigan and Johnny Lee Walker are doing a live broadcast from Charlene Shimmin's Home 2801 Minnesota Ave. Stop by have a cup of coffee and say HI. If its too early for you, turn your radio on and hear about all the fun you are missing.

SECURE STORAGE ON THE POINT!

8'x8'x40'

2560 CUBIC FEET OF STORAGE



Located on 13th and
the Bay at the S curve.

As low as \$100/month
Your lock. Your key.

Boaters...Pointers...

Weather proof secure shipping
container storage conveniently
located here on Park Point.

Quarterly, annual and semi-annual
leases available.

Bayside Boatworks @ 723-1280

Volunteers needed for Park Point Art Fair

It's a fun, easy way to get involved and get to know your neighbors, while supporting a great tradition on the Point that benefits the entire community. Volunteers are needed before, during and after the 41st annual Park Point Art Fair, held Saturday and Sunday, June 25th and 26th. You determine the time commitment and area of interest.

Here are some options:

Before

Help distribute posters and bookmarks to local businesses (late May/ early June)

Help with artist registration, set up tents and staging areas, place signs and more (Friday, June 24)

During

Help greet visitors, booth sit for artists, assist with the family art making activity and more (time slots available between 10am - 5 pm, June 25 and 26)

After

Help clean up and break down the site (4 – 6 pm, Sunday, June 26)

Why your help matters

This annual Park Point Community Club event raises the bulk of the money that the Club uses to support its causes throughout the year— from environmental projects like the preservation of the Minnesota Pine Forest, dune restoration and tree plantings, to the Summer Youth Program at Lafayette and more. Sign up to share as little or as much time as you can spare. In addition to the good karma, volunteers gain an invite to an exclusive, yet highly inclusive, artist/volunteer dinner. Here is your chance to help make it another successful year at the Park Point Art Fair. Please contact Diane Gould, Hospitality Committee Chair at 727-4067 or Carla Tamburro, Art Fair Coordinator at 218-428-1916 or visit our website at parkpointcommunityclub.org where you can print, fill out and mail in a volunteer application.

Good News! This is something we've been pushing for years!

To: All users of the Duluth Aerial Lift Bridge/Duluth Ship canal
From: The City of Duluth, Duluth Aerial Lift Bridge
Re: Bridge Hours

The United States Coast Guard has implemented a permanent CFR change for how and when the Duluth Aerial Bridge operates. Most of the changes only affect the summer months and the heart of the change is outlined below, however a copy of the full CFR change is attached.

§ 117.661 Duluth Ship Canal (Duluth-Superior Harbor).

The draw of the Duluth Ship Canal Aerial Bridge, mile 0.25 at Duluth, shall open on signal; except that, from the Friday before Memorial Day through the Tuesday after Labor Day each year, between the hours of 7 a.m. and 9 p.m., seven days a week, the drawbridge shall open on the hour and half-hour for vessels under 300 gross tons, if needed; and the bridge will open on signal for all vessels from 9 p.m. to 7 a.m., seven days a week, and at all times for Federal, State, and local government vessels, vessels in distress, commercial vessels engaged in rescue or emergency salvage operations, commercial-assist towing vessels engaged in towing or port operations, vessels engaged in pilot duties, vessels seeking shelter from severe weather, and all vessels 300 gross tons or greater. From January 1 through March 15, the draw shall open on signal if at least 12 hours notice is given. The opening signal is one prolonged blast, one short blast, one prolonged blast, one short blast. If the drawbridge is disabled, the bridge authorities shall give incoming and outgoing vessels timely and dependable notice, by tug service if necessary, so that the vessels do not attempt to enter the canal.

Our goal at the Aerial Bridge is to set up a system of operation, during the “Bridge Hours” season, that will provide both boaters and commuters/pedestrians with a set style of operation that is rigid yet allows for some flexibility based on the circumstances of individual lifts.

- 1) The Bridge will not open before the top and bottom of the hour.
- 2) The Bridge will not open past eight minutes after the top or bottom of the hour.
- 3) The Bridge will only open once for the scheduled half-hour lift, if a lift is needed at all.
- 4) To ensure you make the scheduled lift, the most important thing to remember is to call the Aerial Bridge on the marine radio channel 16 and inform the operator of your intention to catch the next lift.
- 5) When the operator believes all vessels requesting a lift are present the scheduled lift will be made.
- 6) If you call the Aerial Bridge and request to make the next lift, if your arrival will put the lift after eight minutes past, you will be required to wait for the next half-hour opening.
For example: The Aerial Bridge log, for a lift, reflects the time from when the bridge operator stops vehicular traffic until vehicular traffic flow is restored. This amount of time is, at a minimum, about three minutes on average. If your arrival and clearance of the Duluth Aerial Bridge will delay vehicular traffic past the eight minute after mark, you will be required to wait for the next lift.
- 7) In order to ensure there are no issues with the actual time being used, the clock in the pilot house of the Aerial Bridge is set to the U.S. Naval Observatory clock, which is the official time for the United States and should coincide with the time on on-board GPS units.

For any questions please email the Aerial Bridge Supervisor, Ryan Beamer, at rbeamer@duluthmn.gov.

News from the Lafayette Community Edible Garden

No experience is needed to join the fun in the garden. Besides actually getting our hands dirty planting and weeding, our activities include building and maintaining the garden beds and compost bins, sourcing supplies, researching gardening methods, fundraising, distributing excess food to local charities, and presenting programs to the Park Point Summer Youth Program. We also do a lot of cooking for our monthly potluck dinners. Our garden is a community effort and we utilize the skills and promote the interests of everyone involved. Plus, we have a good time. If you are looking to connect with more of your neighbors, come meet us in the garden at Lafayette Square!

Gardener Dori Decker reports that at her recent Master Gardener meeting, they packed up at least 20 packages of root crop seeds. She intends to donate her share to our community garden. Watch for these carrots, beets and parsnips growing in our garden and help Dori report on the outcome of these crops, which are being grown for research purposes.

Leaves Wanted: The compost bins at the Community Garden are ready for donations of your chemical-free garden debris and leaves. Feel free to reuse any black plastic bags hanging on the garden fence for this purpose.

Wish List: The following items would help us facilitate the Park Point Summer Youth Program garden projects: old wooden chairs to paint and decorate, any leftover exterior paint - especially bright colors, jar lids for the kids to make wind chimes and funky old clothes for them to make scarecrows. Plus, we are looking for donations of a wheelbarrow, as well as produce seedlings and seeds (heirlooms would be wonderful) to plant in the community garden.

What Are Farms Hiding? Maybe it's the way factory farms mistreat workers, animals, and the environment. Why else would Big Ag be pushing legislators in Minnesota, Florida, and Iowa to criminalize taking photos or videos of their facilities? If you believe that a well-managed farm should have nothing to hide, and that consumers have a right to see how their food is produced, sign the petition being circulated by Slow Food USA at http://org2.democracyinaction.org/o/5986/p/dia/action/public/?action_KEY=6675

Vertical Gardening Solutions: Fellow gardeners recommend EarthBox products for folks who would like to garden but who have a hard time bending over or crawling around on the ground. The EarthBox Mini Gardens can be wall mounted, and elevated garden stands can be ordered for the EarthBox Container Systems. See www.EarthBox.com or call 888-917-3908.

Upcoming Events:

Sunday, May 15, 5-7p.m., monthly meeting and potluck supper. We will have a guest speaker from the Duluth Community Garden Program, who will tell us about the launch of the One Vegetable, One Community program. This program encourages everyone to join together in growing and preparing a common vegetable. The hope is that every lawn, front porch and deck will be adorned with the beautiful foliage of Duluth's first Vegetable of the Year, which is kale for the 2011 growing season. Anyone can join us at our monthly meeting. For more information, give Coral a call at 727-6455.

Tuesday, June 21 will be the summer solstice gathering in the garden, weather permitting.

Park Point Community Club Summer Program 2011

As winter exits and spring unfolds with the sight of green grass and sweet sounds of birds, the elves have been busy preparing for the Summer Youth Program which be ready for the pitter patter of little feet who belong to children ages **5 years old thru 12 years old**. We will be ready to Rock n Roll on **June 13th** and will continue **thru August 11th, closed July 4th**. The cost for the entire **9 weeks** of Fun in the Sun is **\$100.00 for the first child per family and \$50.00 for each additional child**. Our doors will be open from **10:00 a.m. until 4:00 p.m., Monday thru Thursday**. We will be busy playing tennis, soccer, kickball, fishnet frisbee, waterworld on the playground, basket ball, tennis racket t-ball, sand modeling, volleyball, 4-square, hop-scotch, hulla hooping, jump roping, Uno tournaments, bingo, Legoville, ping pong, fooseball, bike riding (helmets required for all riders), swimming, unlimited arts and crafts, picnics and field trips throughout Duluth, various guests and much more. With our Edible Garden friends we will scare the crows with our homemade scarecrows (save your old clothes), taste test vegetables, paint rocks, learn about planting and plant in the kids garden, paint a picnic table or two and many more activities. No need to bring electronics as we have soo much to do. The program is **limited to 40 children, giving first priority to residents and relatives of Park Pointers**. When you come, **bring with you a lunch, snack, beverage, water bottle, swimsuit, sunscreen, towel and a smile**. Wear weather appropriate clothes that can get dirty, sandy, wet, painted, stained, etc. as we are having too much fun to worry about staying clean. If you have any questions please call **Joy @ 728-2424**, and we look forward to seeing you on the 13th of June.

*As you are preparing for the rummage sale and don't feel like pricing these items we will gladly accept and put them to good use: plastic containers for sand toys, arts and crafts supplies (anything), fabric, old cloths for the scarecrows and to use for crafts, corks, jar lids (plastic or metal), planters, pvc pipe, duct tape, old house paint for the picnic tables and rocks, gardening equipment, glass jars, any sports equipment (we could really use tennis rackets and tennis balls), yarn, embroidery thread, needles, an old working sewing machine, beads, chalk, chairs, book cases, dressers.... furniture the kids can paint, legos, games, puzzles, cloths pins, ball pump, books for our lending library, kid approved: G rated VHS movies, plastic bags, lawn furniture cushionsOur motto:" if you don't want it - we will take it". We have some very imaginative and creative artists so the sky is the limit.

Thank You, Joy



Natural Home
Fine building+design
exceptional designs
finely crafted
modern to traditional
218.590.6177 or 218.590.9008

naturalhome@mac.com <http://web.mac.com/naturalhomeandenergy>
2525 lake avenue south. duluth. minnesota. 55802

Edina Realty
www.edinarealty.com

Lynn Bentfield
Realtor, GRI
Duluth Native
Park Point Resident
20 yrs. experience

Cell: 218-464-3790
Direct: 218-728-7702
Fax: 218-728-7710
Toll free: 800-777-8403
lynnbentfield@edinarealt.com



Duluth Office
1515 London Road
Duluth, MN 55812



Editor's Corner

Wow, this is another big, packed-full issue. As we close in on summer, there is, as always, so much going on. This issue has stuff on the rummage sale, the art fair, the summer youth program, tree planting, scheduled bridge lifts, the Lafayette edible garden, and more. If I'd wanted to make this issue even bigger, I could have. There's still more out there. Park Point is hoppin'. (But at least it's not with rabbits anymore!)

The one item I especially want to draw attention to is the appeal for volunteers for the art fair (page 7). This is the big dog on Park Point, the one that pays for most of the other stuff. Tree planting? The Summer Youth Program? Without the art fair, and the volunteers that make it happen, they don't happen!

One thing that is, sadly, not hopping anymore, is the former Bayside Market at 19th Street. It's been closed for a couple years now, sitting empty and for sale, without a buyer in sight. And I still miss it. There have been numerous suggestions and discussions at Community Club meetings on finding a way to re-open it, perhaps as a co-op. But in order for that to happen, someone, or a group of someone's, needs to come forward, take the initiative, and make it happen. And despite numerous appeals, no one has shown a willingness to do that. So, my question is, is it time to give up? Accept the (apparent) reality that neighborhood grocery stores are a thing of the past, and resign myself to running to the plaza every time I need something? Do you have an opinion on this, or has the number of people who even care about this issue dwindled away? If you do care, one way or the other, send me an e-mail at breezeditor@msn.com, and let me know.

Dear Park Point Community Club,

My name is Dave Haavik. I've been a Park Point resident living near the Fire Station for the last four years.

The fire station badly needs some exterior maintenance but the city can't seem to accomplish anything in this area because it is riven by several factions, one of which wants to rebuild the place from the ground up, and another which wants to eliminate Fire Station No 5 entirely.

I thought that we could, as a community, repaint the place with 6-10 volunteers and perhaps \$500 of materials. Everyone I've talked with has been enthusiastic and I think we'd have no trouble finding volunteers. Would the Community Club be willing to sponsor this project?

Earlier this spring I contacted my friend Fireman Rick with the idea. He met a lot of resistance along the way, but eventually got a firm answer from the City Architect, who said we were welcome to repaint the fire station if

- 1) we submit a Project Request Proposal to his office; and
- 2) said Project Request Proposal contains "safe lead-based paint removal practices."

I don't know how much extra effort and expense this will entail, but I still think this is an idea which could be of interest to the Community Club. All the neighbors on 22nd Street are on board, and we can help with logistics and management.

Respectfully yours,
David Haavik

Duluth-Superior Sailing Association

www.SailingForAll.org

(218) 391-5521

Join our
Sunday afternoons
at the races



Proudly hosting
D21 Laser Regatta
August 7-8

Youth, Adult, Group, and Private Lessons
Weekly Races, Advanced Sail/Race Coaching
Community Sailing

We're on Park Point, next to the public boat launch.

The Breeze

Park Point Community Club
P.O. Box 16326
Duluth, MN 55816-0326



Park Point Resident

Numbers you can use

Got (non-emergency) issues you'd like to discuss, but don't know whom to call? Here's some numbers you can use: Parks Maintenance Division: 730-4491 (after hours 730-4150)

Fire station #5 (Park Point): 723-3215

City Councilor Sharla Gardner: 724-4701 sharla.gardner@gmail.com



A Place You Can Call Home.

With beautiful views, caring staff and a daily schedule of activities, Bayshore combines the comforts of home with the comfort of having 24-hour healthcare services. Bayshore is a licensed nursing home that is Medicare and Medicaid certified.

- ~ Rehab services with private suites ~ Wound and IV therapy
- ~ 24-hour skilled nursing care ~ Dementia care specialty
- ~ Young adult care specialty ~ Spiritual care



Bayshore is a member of the Ecumen family of senior housing and services.



Call for a tour: (218) 727-8651

1601 St. Louis Avenue ~ Duluth, MN 55802
www.bayshoreduluth.org

