

The Breeze

OF PARK POINT

Vol. 40 issue 4

www.parkpointcommunityclub.org

April 2011

Calendar

**Park Point Community
Club Meeting
April 21st, 7PM
At Lafayette**

**Lafayette Edible Garden
Pot-luck Dinner
April 18, 5:30-7:30 at
Lafayette**

**Park Point Rummage Sale
June 10th & 11th**

**Park Point Art Fair
June 25th & 26th**

**Spring!
It's Here!
(sort of)**

Coming Through the Ice



This isn't the picture I planned to put here. Tom Mackay sent me a great picture of the James Barker, the first ore boat to go out this season, and I was going to run it here, with a brief article on the completion of this winter's bridge work, and the opening of the shipping season. Then the winds and waves of "The Blizzard That Didn't Happen" sent up a spray that covered Canal Park in a sparkling coat of ice. I went down there to take some pictures of the ice caked trees, benches and other objects, and another ore boat just happened to be going out. I couldn't resist the picture of the boat and the bridge from across the ice covered ground. Spring doesn't come in easily here.

Beyond that, it sounds like we'll be seeing plenty of ore boats this year. It's looking to be a busy shipping season.

The mission of the Breeze is to serve the community by:

- 1) Publishing the minutes and financial statements of the Park Point Community Club
- 2) Informing the community of upcoming meetings, events, happenings and projects
- 3) Providing a forum for Park Point residents to air their concerns
- 4) Sharing the history, stories and anecdotes that make Park Point a unique place to live

The Breeze

Editor: Alan Dartanyan
726-0110

Submissions

The deadline is May 6th for the May 2011 issue. Please send submissions to Alan Dartanyan at breezeditor@msn.com by e-mail or deliver to 1540 Minnesota Ave.

Park Point Community Club Officers:

President: Dick Gould
3003 Minnesota Ave.
727-4067

Vice President: Liz Mackay
2233 Minnesota Ave.
722-1834

Secretary: Sheryl Robins
722 Minnesota Ave.
720-6518

Treasurer: Al Robins
722 Minnesota Ave.
720-6518

Committees

ART FAIR

Carla Tamburro
727-2661

Rummage Sale

Charlene Shimmin 722-6828
Dave Lavamaki 729-8925

ENVIRONMENTAL

Kinnan Stauber, 722-6255

HOSPITALITY

Diane Gould, 727-4067

LAFAYETTE SQUARE RENTALS

Missy Steichen 218-208-9545
ppccdhl@gmail.com

S-CURVE SIGN

Dave Johnson, 722-9764

SUNSHINE

Pam Griggs
727-2158
pegriggs@clearwire.net

Park Point Community Club
P.O. Box 16326
Duluth, MN 55816-0326
www.
parkpointcommunityclub.org

From The President

Spring is here! The birds have arrived, the ice is breaking up and the City has put up new doggie bag dispensers, with no garbage cans! Oh well not everything can be perfect. We need garbage cans and dumpsters on the point all thru the year.

Lafayette rentals continue to grow under the guidance of Melissa, our new rental agent.

The question of replacing our street lights with LED lights has again come to the table and should happen. This would drastically reduce the cost of lighting thru less electricity, maintenance with far more light per fixture.

The agent for the sale of the store told me that any offer for purchase or rental/lease would be considered. Maybe it is time to get serious about putting a committee together to pursue the possible opening of the store as a co-op. If you have an interest please come to the April meeting.

Trees are ordered and should be here about the 1st of May.

After being on hold for what seemed like days, I have just been assured by an executive person at the IRS office in Cincinnati that the club should hear from the IRS as to the status of our 501 C-3 application within 30 days.

Thanks to Dave Lavamaki and my wife Diane the down stairs kitchen is all newly painted and ready for the summer youth program.

A big thank you to Heidi Harrison who is going to keep the doggie doo bag dispenser behind Lafayette filled and Dave Eggert who came up with the key.

A thank you to Maurices and Val Oulette, who got us the comfy rolling chairs for Lafayette

Dick

GYPSY MOTH UPDATE

The Park Point Garden Club has asked Judy Gibbs to talk with our community about the upcoming treatment of gypsy moth and its effect on our area. Judy will be at Lafayette on Thursday, April 28, 7pm, for a short talk with a question/answer period. The community is invited to attend and enjoy cookies and coffee. If questions contact Pam Griggs, 727-2158, pegriggs@clearwire.net.

Making house calls to provide computer problem troubleshooting, computer setup, or personal tutor services. Providing \$99 design, setup, and hosting services for your personal or small business website. Check out www.Vitzki.com for more information.

Computer calls:
ONLY \$20 / hour
+ mileage



\$99
websites !

FASTER at responding to your call than other more expensive companies, **MORE EFFECTIVE** than a sledgehammer, and usually **ABLE TO FIX YOUR COMPUTER** in a single, short visit...
"your computer superhero"

Ryan Novitzki • (218) 341-4948 • ryannovitzki@yahoo.com

St. Andrew's by the Lake Episcopal Church

www.standrewsbythelake.org
727-1262

We're on FACEBOOK now!
Visit us for the latest updates.

HOLY WEEK at SAINT ANDREW'S

April 17 - Palm/Passion Sunday 9:45 worship with
Pancake Breakfast to follow (sponsored by Teens)

April 21 - Maundy Thursday Holy Eucharist and
Footwashing - 5:30 p.m.

April 22 - Children's Event - 9:00 a.m. (ages 5 to 10)

April 22 - Good Friday Liturgy - 12 p.m.

April 23 - The Great Vigil of Easter (7:00 p.m.)
with the first Party of Easter to follow.
Act ivities for children after the Vigil.

Childcare available

April 24 - Easter Sunday (9:45 a.m.)

followed by the Easter Brunch

Worship and special events for children, too.

You are welcome to participate in all our
worship and activities.

*Let yourself be silently drawn by the stronger pull
of what you really love.*

Rumi

God strolls amidst the pots and pans.

St. Teresa of Avila

Our Lady of Mercy

Catholic Church

2002 Minnesota Ave

722-3078

Fr. John Petrich,

Small Acts of Kindness

This, rather, is the fasting that I wish . . .

Setting free the oppressed, breaking every yoke;

Sharing your bread with the hungry,

Sheltering the oppressed and the homeless;

Clothing the naked when you see them . . . Isaiah 58:6-7

A teenager was lounging on the floor watching television when the phone rang. "Hello, son," the caller said, "where is your mother?" "She's out working in the garden." "What!" barked the voice? "Your mother isn't as young and strong as she used to be. Why aren't you helping her?" "I can't" was the reply, "Grandma is using the other hoe!"

Lent is often associated with personal acts of discipline- giving up dessert, coffee or a favorite delicacy. Such acts have a place, but we should not stop there. Our disciplines should open us to the needs of others.

If we are willing to get up and look for those opportunities we will find them. They don't have to be heroic acts. Small acts of kindness will do. This Lent, I urge you to seek out someone who needs a helping hand – *your* helping hand.

Note: New Mass Time

Sunday Eucharistic Celebrations

Every Sunday at **8:00 A. M.**

Is a Reverse Mortgage

something *you* should consider?



A checklist to see if a **Reverse Mortgage** might make sense for you.

- ☒ Could you use extra cash or monthly income?
- ☒ Do you have quite a bit of equity in your home?
- ☒ Do you want to remain living in your home for as long as possible?
- ☒ Are there repairs or improvements you would like to make to your home?
- ☒ Are there extra things you would like to do for yourself and your loved ones?

If you are 62 or older, find out how much tax-free cash you qualify for. Call WesternBank - your locally owned hometown bank since 1904.

WesternBank

723.1000
www.WBduluth.com

WEST DULUTH OFFICE • 201 North Central Avenue
DOWNTOWN OFFICE • 202 West Superior Street
MILLER HILL SUPER ONE OFFICE • 5401 Burning Tree Road



Bathrooms, Kitchens, Basements, Attics
Windows, Doors, Flooring, Sheetrock
Siding, Sheds, Fences, Decks, Saunas

NEW TO PARK POINT!

JIM OURAY 218-370-8980

EXTENDED BY POPULAR DEMAND!

Eating fit!

A healthy serving of healthy servings



Thai Chicken with Sesame Dressing

Due to the overwhelming responses to Eating Fit!, it is now going to stay on the main menu! Enjoy the flavors of Green Mill and be true to your commitment to eat healthy. Counting fats, calories or even dietary fiber? The Green Mill Eating Fit menu features healthier alternatives — many that meet the requirements of today's most popular diets.



340 Lake Ave ★ Duluth ★ 218-727-7000

Don't take legal issues into your own hands!



Consult



Leege Law!

Park Point's own legal counsel
Focus on

Land Issues & Estate Planning

Sellers/buyers

Deeds/contracts/purchase agreements

Landlord/tenant

Wills/trusts

Powers of Attorney

Health Care Directives

***Real Property Law Specialist.
MSBA Certified**

Also available evenings and weekends, your home or mine

Larry L. Leege, P.A.
3219 Minnesota Avenue
Duluth, MN 55802
218-831-0438
Larkan8@clearwire.net

Park Point Community Club Minutes

March 17, 2011

President Dick Gould called the meeting to order @ 7:00 pm.

Motion was made and seconded to accept meeting minutes from February, 2011 meeting.

Treasurer's report - Al Robins reported a current balance of \$39,480. Last month's deposits totaled \$1598 with expenses of \$1317.

Motion was made and seconded to accept the Treasurer's report.

Communications report - Dick Gould reported again on the possibility of a fishing contest. A winter fishing contest was preferable. He asked for a chairperson. Doug Artez said he could help on a volunteer basis. A group of 50 volunteers would be needed.

501C3 status is still in the waiting for approval stage. The person who was expected to do the approving was on vacation until 3/21/2011.

Breeze report - Nothing new to report

Rummage Sale report - David Lavamaki requested that \$50 be available for reimbursement in advance for the cost of the rummage sale.

Fireman report - Chad Rindahl reported last month there were 6 runs. 5 medical calls and 1 miscellaneous. No more to report.

Membership Committee - Liz MacKay reported 205 membership forms have been received for this year's drive. This figure is down from last year. It was recommended that another form be put in the Breeze.

Street Lights on Park Point - LED lights could be replaced for about \$50 each. The club discussed the possibility of the Park Point Community Club replacing all the lights on the point.

Tree Planting - Motion was made and seconded to purchase 500 trees to be planted on Park Point. Dick Gould said they would need volunteers to plant.

Road conditions on Park Point - Tom Mackay said he was disappointed with the City of Duluth's handling on repairs to the streets on Park Point. Also brought up was the difficulty for the disabled residents at Bayshore Health Center to get to the bus stop on Lake Ave. The potholes and standing water make it difficult for those people that use public transportation at Lake Ave. to get to that point in a safe manner.

Diane Gould made a motion to adjourn the meeting. Donald Freimuth seconded the motion.

News from the Lafayette Community Edible Garden

Welcome New Garden Members: Dave Poulin, B.J. Weisen, Ann Feyen.

Better Gardening Through Education: One of the joys of being part of our community garden is that we learn to be better gardeners. At our March potluck supper, Sustainable Farming Association member John Fisher-Merrit talked about various types of fertilizer and how using certain cover crops will enhance the soil. For example, plant a row of tomato plants down the center of a bed (not too close together) with clover planted along the sides. In the next growing season, the clover can be tilled into the soil for nutrition. John also suggested that to avoid disease, we mulch underneath our tomato plants so that none of the plants' leaves touch the soil. Furthermore, we shouldn't disturb our soil too much by digging too deeply as we prepare to plant. Like Dave Hanlon, who was our speaker at February's potluck, John shared his deep affection and admiration for the amazing soil that gives us so much abundance. He made it so clear that the soil is a complex biodiversity of microbes, insects, bacteria and plant life.

Garden Beds Available: If anyone is interested in obtaining an individual bed within the Lafayette Community Edible Garden for the 2011 planting season, contact Coral at 727-6455. We have a limited number of plots available to Park Pointers for a nominal fee. All you supply is your plants, seeds and labor.

Leaves Wanted: As you do your spring clean-ups in your gardens, don't forget that the compost bins at the Community Garden are ready for donations of your chemical-free garden debris and leaves.

Delicious Listening: Podcasts of Edible Stories about chefs, farmers and lovers of the land that have been broadcast on Edible Radio are available for your listening pleasure at www.EdibleCommunities.com.

April Potluck Dinner Meeting:

NEW DAY AND TIME: MONDAY, April 18 from 5:30-7:30. Our guest presenter will be Bob Olen, Extension Education, University of Minnesota Extension, St. Louis County. He will talk about growing tomatoes in Northern Minnesota. He will discuss when to plant, how to plant, mulching, staking, and various growing techniques and problems. He will also give us a list of the top ten varieties for the Northland. Anyone interested in participating in our potluck dinners is welcome. This is a great way to get to know your creative, fun-loving, community-minded neighbors.

Other upcoming area events of interest to gardeners:

Tuesday, April 12, 6:30 – 10:30p.m.: Come join MPIRG at UMD's Kirby Lounge for an informative, interactive night on sustainable farming in Minnesota. The evening's activities include viewing the film 'Farming Forward,' hearing from UMD farms, and planting seed-starters. No charge.

New Food Regionalism Public Speaker Series,

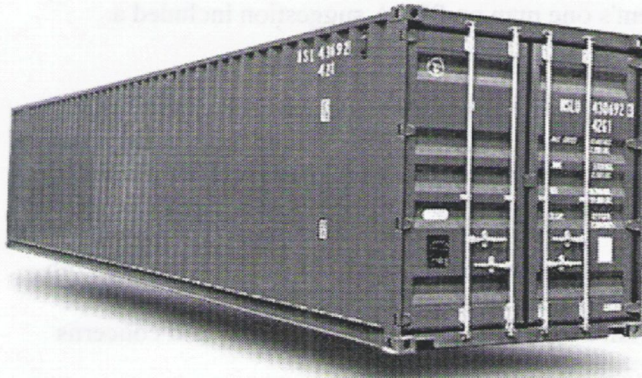
Friday, April 22, 7:00p.m.: *Growing Power and Growing Food*, UMD Kirby Ballroom.

Thursday, April 28, 3:45p.m.: *Food Systems in Healthcare*, UMD Library Rotunda.

SECURE STORAGE ON THE POINT!

8'x8'x40'

2560 CUBIC FEET OF STORAGE



As low as \$100/month
Your lock. Your key.

Located on 13th and
the Bay at the S curve.

Boaters...Pointers...

Weather proof secure shipping
container storage conveniently
located here on Park Point.

Quarterly, annual and semi-annual
leases available.

Bayside Boatworks @ 723-1280



Superior Turf was created by Mike Brostrom. Mike has worked for a professional lawn company in the past and has performed landscaping and lawn mowing for commercial and private organizations for the past 6 years. He has taken several classes including college level courses with the University of Minnesota and University of Nebraska-Lincoln Turfgrass Science programs. Mike is a licensed technician applicator with the Minnesota Department of Agriculture for turf and ornamental fertilizer and herbicide/pesticides.

Superior Turf believes in a responsible approach to fertilizing and herbicide treatments. Mike's college level training and experience means he is well qualified to discuss what your lawn needs and how to obtain the optimum results. By utilizing the highest quality, slow release nitrogen formulas and a responsible herbicide program, a beautiful and sustainable lawn is easily within your grasp. Please feel free to call or email us with your questions or to setup a treatment program. We are confident you will find Superior Turf to be the best investment your turf has ever seen.

Services Offered: Fertilization, Weed & Insect Control, Aeration, Power Seeding & Soil Testing.

www.SuperiorTurf.us ; 728-1140



**Painting
By
Dave**



**I take Pride and Care in my
Workmanship**

Call for Spring Specials!

Home care Services

Interior & Exterior painting

Staining

Cement work – tuck pointing – crown repair

General house repair

Antique restoring

Driveway seal coating & Deck Staining

Powerwashing & House cleaning

Window cleaning – inside or out

Gutter cleaning

Lawn care

Garden tilling

House & pet sitting

References available

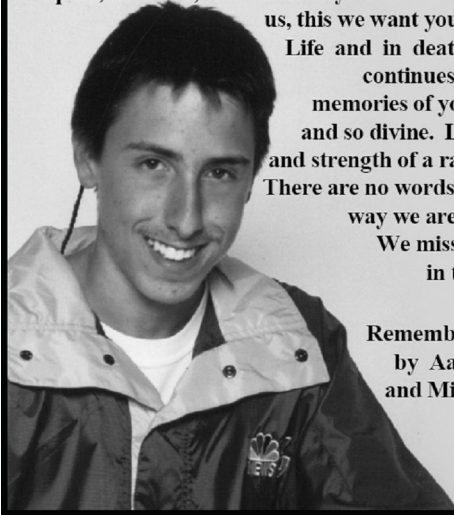
Call Now

Dave. 218-340-3426

*In Loving Memory of
Alex Sahlberg*

August 22, 1986 - April 13, 2005

Six years have passed since your life here on earth came to a sudden end. And yet, here we are still searching for a way for our hearts to mend. Our souls are so heavy with the grief we are under. Far greater than the force of lightning and thunder. You were such an important person to us, like a member of our family tree. We wish we could unlock the feeling of pain, however; there is no key. You were so loved by us, this we want you to know. In



Life and in death, that feeling continues to grow. Our memories of you are so great and so divine. Like the power and strength of a ray of sunshine. There are no words to express the way we are feeling today. We miss you so much, in the worst way.

Remembered with love
by Aaron, Kathleen
and Michael DeBaiso



Natural Home
Fine building+design
exceptional designs
finely crafted
modern to traditional
218.590.6177 or 218.590.9008

naturalhome@mac.com <http://web.mac.com/naturalhomesandenergy>
2525 lake avenue south. duluth. minnesota. 55802



Lynn Bentfield
Realtor, GRI
Duluth Native
Park Point Resident
20 yrs. experience

Cell: 218-464-3790
Direct: 218-728-7702
Fax: 218-728-7710
Toll free: 800-777-8403
lynnbentfield@edinarealt.com



Duluth Office
1515 London Road
Duluth, MN 55812



Lafayette Rentals

Lafayette is a great place to hold weddings, reunions, parties, meetings, etc...

The Rental fees are as follows:

- up to 50 people - \$100.00
- 50-100 people - \$200.00
- 100-125 people - \$300.00

There is a Damage Deposit of \$100.00, which is refundable, after cleaning & inspection.

The hours available are from 8:00 am until 10:00 pm

Missy Steichen is our rental agent. You can reach her by phone at 218-208-9545 or by e-mail at ppccdhl@gmail.com

In last month's issue I mentioned that I should do an article on the "zoning mess" on Park Point, particularly around 10th Street. However, I also pointed out that I didn't completely understand it. I heard from our city councilor, Sharla Gardner, who DOES understand it. She agreed to write an article explaining it, which is found below. I thought it was well worth expanding the Breeze this month to include it. The Editor

RECENT PARK POINT ZONING CHANGES

As many of you know, the City Council approved 2 major zoning changes on the Point in March. The first change (Ordinance 004) is for 1000 Minnesota Ave from the previous zoning of "Industrial Waterfront" to "Mixed Use Waterfront" (MU-W), pursuant to Joel Johnsons' request. The second change Ordinance 008) involves the area from 8th St. to 11th St. along Minnesota Ave to the rear property line, from "Mixed Use Business Park to R-1, "Traditional Neighborhood", pursuant to the City Planning Dept and the Planning Commissions' request to put the area in compliance with the Comprehensive Plan.

Mixed Use Waterfront (MU-W) zoning allows for waterfront dependent commercial uses and medium to high density residential development. It also allows for "visitor dependent" retail businesses, lodging, maritime and recreational facilities that fit with the waterfront setting. This zoning includes locally oriented businesses, such as a grocery store.

R-1 (Traditional Neighborhood) zoning accommodates single family dwellings, duplexes and townhouses in already established neighborhoods throughout the City. It also provides for "minimum setback flexibility on adjacent lots". (Quotes are from the Unified Development Chapter Ordinance aka UDC).

Essentially the effect the new zoning R-1 will have on the adjacent zoning MU-W, will be limit the height of a building within 200 feet of the newly zoned R-1 (Traditional Neighborhood) to 35 feet. (Similar to the height restrictions required of Canal Park hotels). These limitations will be on any future developments within that 3 block area between 8th and 11th. Within the R-1 zone, the height limitations are now 30 feet and development is limited to residential uses as described above.

The new zoning will also have the effect of limiting changes and expansions of existing businesses located within that 3 block area that are within 200 feet of the area now zoned R-1. This is one of the reasons a Small Area Plan is essential for the area located next to the Aerial Bridge to 12th Street. The City Council authorized the Planning Dept. to initiate a small area plan by a 2010 Council Resolution. Due to staffing issues, the Plan work will start in mid 2012. The consensus between residents, business owners, most city councilors (including yours truly) and other interested parties, is the area will change within the next 10 years to accommodate our growing tourism industry.

So, we, the community, have a choice. We can either sit down and do a real plan for the highest, best uses for the area, that will accommodate and showcase the areas' unique qualities, OR, we can sit back and wait for developers to pitch their proposals piecemeal to the Planning Dept. and react to their ideas, good or bad, as we are doing now. This non-process is extremely stressful for all concerned; the residents, home owners, developers, planning staff and the Council. It also is bad planning and often results in a hodge-podge of unconnected businesses and uses that do little to fit in or profit existing and new businesses.

The Small Area Plan will take a pro-active approach to development. Planning staff will gather all the stake holders together (business owners, neighbors, potential developers, planning commission members, area city councilors). The group will do a market analysis, decide upon and articulate a long term vision for appropriate commercial and land uses, examine and correct, if necessary, the existing zoning, examine the existing infrastructure, make decisions about possible traffic re-routing, decide whether “form based” zoning would work in the area, and implement other ideas that develop during this process. Everything will be on the table.

As your Councilor, I’ve had to make tough decisions about land use and zoning on the Point. I have acted in the long term best interests of the entire Park Point community, from both an environmental, quality of life standpoint, as well as what is best for real estate and business interests. Quality of life and business interests are inextricably connected on the Point; this small, unique sand spit at the tip of Lake Superior. It’s essential we all work together to grow and change in an intelligent and plan-ful way. This will take additional serious work, a collective vision for what’s best in the long term and extra time. This is nothing new to Park Pointers; you all have been doing this work for years. It is worth it.

Sharla Gardner

2011 PPCC Membership Drive

At last count, vice- president Liz Mackay reported that we have received 211 memberships for 2011. A bit down from last year, but they’re still coming in. If you haven’t joined yet, you can do it at any time. To make things easier, I’m including another membership form

PPCC Membership Form

Name(s)_____

Address_____

E-Mail address_____

Number of Memberships_____ **X \$3.00=**_____

Please Mail Checks to:

**Park Point Community Club
P.O. Box 16326
Duluth, MN 55816-0326**

Editor's Corner

Got a slightly expanded issue of the Breeze this month, mostly due to an article from City Councilor Sharla Gardner on zoning and planning on Park Point. This is a subject I've been wanting to cover for some time, but frankly, it was a little over my head. But I think Sharla explains it pretty well. And to the best of my understanding, I think the recent zoning changes represent a pretty good compromise, allowing development, but limiting it's impact on the neighborhood. And best of all, they conform to the city's Comprehensive Plan.

I don't know about anyone else, but I was kind of disappointed that we didn't get the big blizzard they predicted last month. But the wind and waves were still impressive. If you want to see what a good storm looks like, there's a bit of video on the city's website:

www.duluthmn.gov

Click on Visitor, then go to photo gallery and video gallery. They've got a bit of extreme weather video shot by the late Alex Sahlberg.

I imagine everyone who lives past the s-curve got their bills for the street resurfacing that was done last fall – and paid them with fingers crossed, hoping it will hold up. But while Minnesota Avenue is looking good, I may as well take the opportunity to whine about a side street that is NOT looking good. I'm talking about the one block section of 16th Street, from St. Louis Avenue to Minnesota. Bayshore Nursing Home sits at one end of this street, while the bus stop used by both residents and employees of Bayshore sits at the other. It is a rutted, potholed, puddle filled stretch of gravel without a sidewalk, and watching elderly and handicapped people making their way through this minefield with canes and walkers is just painful. Do you think maybe we can get the city to do something about that?

PARK POINT GARAGE Friday, June 10 & Sat. June 11 8 AM - 6 PM.

Only 2 months to get those basement, closets, cabinets, garages etc cleaned out of unwanted Stuff, taking up room.

It is wise to price STUFF as you take it get out. It will save last minute rush or a panic attack!

Please try and have a sale even if it is just a few items. The Bargains Hunters are so happy to see so many sales. It puts smiles on their faces.

We are still looking for names of non profit groups that will be having sales, so we can included the information with our Press Release that goes out about May 15.

If you have any questions call Charlene Shimmin or Dave Lavamaki or email: parkpoint@clearwire.net

Dog Walker/Jogger needed!

4 days per wk./\$12 per hr.

"Charlie" **BIG**, goofy Goldendoodle.

"Tracker" mellow, older collie mix.

Days negotiable, AM or PM OK.

Please call Candy @ 722-1796

Duluth-Superior Sailing Association

www.SailingForAll.org

(218) 391-5521

Join our
Sunday afternoons
at the races



Proudly hosting
D21 Laser Regatta
August 7-8

Youth, Adult, Group, and Private Lessons
Weekly Races, Advanced Sail/Race Coaching
Community Sailing

We're on Park Point, next to the public boat launch.

The Breeze

Park Point Community Club
P.O. Box 16326
Duluth, MN 55816-0326



Park Point Resident

Numbers you can use

Got (non-emergency) issues you'd like to discuss, but don't know whom to call? Here's some numbers you can use: Parks Maintenance Division: 730-4491 (after hours 730-4150)

Fire station #5 (Park Point): 723-3215

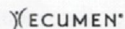
City Councilor Sharla Gardner: 724-4701 sharla.gardner@gmail.com



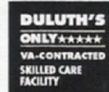
A Place You Can Call Home.

With beautiful views, caring staff and a daily schedule of activities, Bayshore combines the comforts of home with the comfort of having 24-hour healthcare services. Bayshore is a licensed nursing home that is Medicare and Medicaid certified.

- ~ Rehab services with private suites ~ Wound and IV therapy
- ~ 24-hour skilled nursing care ~ Dementia care specialty
- ~ Young adult care specialty ~ Spiritual care



Bayshore is a member of the Ecumen family of senior housing and services.



Call for a tour: (218) 727-8651

1601 St. Louis Avenue ~ Duluth, MN 55802
www.bayshoreduluth.org

