

The Breeze

OF PARK POINT

Vol. 38 issue 11

www.parkpointcommunityclub.org

November 2009

Calendar

Park Point Community Club Meeting
November 19th, 7PM
At Lafayette

Good Dog Club
Wednesdays at 6:30

Nancy English Memorial 5k
November 14
10AM at Sky Harbor Airport

Turkey Bingo at Bayshore
November 15
1:30 PM

Park Point Health Expo
November 21, 9AM-12PM
At Lafayette

Edible garden Potluck
November 22, 5-8PM
At Lafayette

Grilling The Candidates



From left to right, council candidates Becky Hall, Dan Hartman, Beth Olson and Jim Stauber.

The mission of the Breeze is to serve the community by:

- 1) Publishing the minutes and financial statements of the Park Point Community Club
- 2) Informing the community of upcoming meetings, events, happenings and projects
- 3) Providing a forum for Park Point residents to air their concerns
- 4) Sharing the history, stories and anecdotes that make Park Point a unique place to live

City Council At-Large candidates Becky Hall, Dan Hartman, Beth Olson and Jim Stauber attended the October Community club meeting. All were coming straight from another meeting, so we tried to keep it short. Each candidate gave a brief “why you should elect me” speech, then took questions from the audience. Quite a number of issues were raised, and club members voiced some of their frustrations in working with the city, and how the city works. Or doesn’t. Our own District 3 Councilor Sharla Gardner was also in attendance, and perhaps the most valuable part of the meeting was not when the candidates were speaking, but when they were just listening to the regular business of the club, hearing the things we are doing, and things we are trying to do, and the difficulties we’ve encountered. None of the candidates were there for the whole meeting, and how much attention we’ll get after the elections is always a question, But with forums like this, the candidates get to see who we are, what we do, and hear what issues are important to us. And that’s never bad.

The Breeze

Editor: Alan Dartanyan
726-0110

Submissions

The deadline is December 4th for the December 2009 issue. Please send submissions to Alan Dartanyan at breezeditor@msn.com by e-mail or deliver to 1540 Minnesota Ave.

Park Point Community Club Officers:

President: Dave Poulin
3101 S. Lake Ave.
722-1511

Vice President: Liz Mackay
2233 Minnesota Ave.
722-1834

Secretary: Dawn Buck
3105 Minnesota Ave.
525-1764

Treasurer: Chuck Flaig
1511 Minnesota Ave.
727-2814

Committees

ART FAIR

Carla Tamburro
727-2661

Rummage Sale

Charlene Shimmin
722-6828

ENVIRONMENTAL

Kinnan Stauber, 722-6255

HOSPITALITY

Diane Gould, 727-4067

LAFAYETTE SQUARE RENTALS

Barb Flaig 727-2814
lafayette.ppcc@yahoo.com

S-CURVE SIGN

Dave Johnson, 722-9764

SUNSHINE

Pam Griggs
727-2158
peggriggs@clearwire.net

Park Point Community Club

P.O. Box 16326

Duluth, MN 55816-0326

www.

parkpointcommunityclub.org

News from the Lafayette Community Edible Garden

Perhaps you've noticed more raised garden beds sprouting up in the community garden in the old hockey rink at Lafayette Square. This is in part thanks to Vesel Construction Inc.'s generous donation of lumber. We now have 13 beds built, 4 compost bins, 7 fruits trees, 27 charter members, but alas, no partridge for the pear tree.

On October 11, garden members enjoyed a Sunday potluck supper. My, we sure have a lot of great cooks in this group. Our guest speakers were Mary Dragich, the leader of Slow Foods Lake Superior (www.SlowFoodLakeSuperior.org), and her husband, John Pastor, Ph.D., Professor of biology at UMD. Both avid gardeners, they shared tips that we plan to put to use in the community garden.

Here's a recap of John's demonstration on the care and pruning of apple trees:

1. Cut off long (sucker) shoots and branches that rub together.
2. Cut 1/4 to 1/3 of the branches off each year.
3. Cut the top off the tree crown and thin the center of the tree each year to let in more light and air. The crown should be open and there should be lots of horizontal branches so the tree looks like a ladder.
4. Prune every year in the early spring when the tree is still dormant.
5. Mulch around the tree base – don't run lawn under the tree.
6. To keep deer away, buy Bitter Bite (available at Dan's Feed Bin in Superior) and apply it to the trees in the fall.

Soup's On

'Twas the month before Christmas, when all through the house, The gardeners were stirring their pots full of grouse. The tables were set in the dining hall with care, In the hopes that Park Pointers soon would be there. The children rejoiced at the bountiful spreads, while visions of feasting danced in their heads. And mamas in 'kerchiefs and men in their caps, bellied up to the tables before there was nothing but scraps.

Help us finish the poem by joining us for good holiday cheer November 22 from 5 to 8p.m. at the Lafayette Square Community Center. Please bring a potluck offering of side dish, bread or dessert to complement the rib-sticking pots of soup garden members will be creating. In an effort to reduce waste, please supply your own dishes and eating utensils. Any questions? Just call Coral, 727-6455.

Desperately Seeking Max Organics

Max: We've ogled your garlic labeled **Produce from Park Point** perfectly perched in baskets at the Whole Foods Co-Op. But, not one of the community garden cognoscenti knows who you are. We seek your advice on how to grow garlic successfully in the Lafayette Community Edible Garden. If you're willing to share your knowledge and time, please contact Lyn (727-3770). Better yet, why not join us at our November 22 potluck dinner?

EXTENDED BY POPULAR DEMAND!

Eating fit!

A healthy serving of healthy servings



Thai Chicken with Sesame Dressing

Due to the overwhelming responses to Eating Fit, it is now going to stay on the main menu! Enjoy the flavors of Green Mill and be true to your commitment to eat healthy. Counting fats, calories or even dietary fiber? The Green Mill Eating Fit menu features healthier alternatives – many that meet the requirements of today's most popular diets.



340 Lake Ave ★ Duluth ★ 218-727-7000

Don't take legal issues into your own hands!



**Consult
Leege Law!**



**Park Point's own legal counsel
Focus on**

Land Issues & Estate Planning

Sellers/buyers

Deeds/contracts/purchase agreements

Landlord/tenant

Wills/trusts

Powers of Attorney

Health Care Directives

***Real Property Law Specialist.
MSBA Certified**

Also available evenings and weekends, your home or mine

**Larry L. Leege, P.A.
3219 Minnesota Avenue
Duluth, MN 55802
218-831-0438
larkan8@clearwire.net**

St. Andrew's by the Lake Episcopal Church
2802 Minnesota Avenue
www.standrewsbythelake.org
727-1762

The opening of our **Art Exhibit** was just wonderful! If you would like to view the exhibit, it will be up until November 22nd. We are always open from 9-12 on Sunday's -- and other times by arrangement - or if you happen to see the lights on -- feel free to come in!

On November 29th, we celebrate **St. Andrew's Day** with a festive liturgy, lunch and the Talent Show. Come join us for a morning of fun! All are welcome.

The **Bridge to Peace 5K Walk/Run** is organized and receiving registrations. We hope to have all of it funded by donations, so that all proceeds will go to our project - sustaining elementary schools in Pakistan. This is our global outreach. Whatever funds we raise will be matched by Go-Fresh. The registration fee is \$25. You can register online at our website. The 5K is on Saturday, December 5th.

*Holy Spirit
you fill the universe
and bring within the reach of our
fragile humanity these Gospel values:
goodness of heart, forgiveness,
compassion.*

The late Brother Roger of Taizé

Our Lake of Mercy Catholic Church
2002 Minnesota Ave
722-3078

Priests: Fr. Kuriakose Nediakala and Fr. John Golobich
Deacons: Roger Birkland and Ted Windus Sr.

Prayer for the Way of Peace

Almighty God, in whose hands lies the destiny of men and nations, let not the hopes of men perish, nor the sacrifices of men be in vain.

O holy and life-giving Spirit, enable us by thy grace to root out from our common life the bitterness of ancient wrongs and the thirst to avenge the betrayals of long ago. Save us from the tyranny of history and set us free in a new obedience to service each other in the present hour.

Accepting the redemption wrought for us, we believe that all our sins of yesterday are covered by thy mercy; Grant us therefore, grace and courage to give and to receive the forgiveness which alone can heal today's wounds.

Draw us, O Lord, towards loving kindness and guide us into the way of peace.

Services

Sunday Eucharistic Celebrations
Every Sunday at 9:00 A. M.

Sacrament of Reconciliation
Every Sunday at 8:30 A. M.



Naturally Chiropractic
Dr. Stephanie West

404 W. Superior St.
Suite 225C
Duluth, MN 55802

218-722-2004 tel
218-740-4322 fax
swest_dc@yahoo.com
www.naturallychiro.com



Natural Home
Fine building+design

exceptional designs
finely crafted
modern to traditional

218.590.6177 or 218.590.9008

naturalhome@mac.com <http://web.mac.com/naturalhomeandenergy>
2525 lake avenue south. duluth. minnesota. 55802



IMPROVEMENT AND MAINTENANCE

Bathrooms, Kitchens, Basements, Attics
Windows, Doors, Flooring, Sheetrock
Siding, Sheds, Fences, Decks, Saunas

NEW TO PARK POINT!

JIM OURAY 218-370-8980

Is a Reverse Mortgage

something *you* should consider?



A checklist to see if a **Reverse Mortgage** might make sense for you.

- Could you use extra cash or monthly income?
- Do you have quite a bit of equity in your home?
- Do you want to remain living in your home for as long as possible?
- Are there repairs or improvements you would like to make to your home?
- Are there extra things you would like to do for yourself and your loved ones?

If you are 62 or older, find out how much tax-free cash you qualify for. Call WesternBank - your locally owned hometown bank since 1904.

WesternBank

723.1000
www.wbduluth.com

WEST DULUTH OFFICE • 201 North Central Avenue
DOWNTOWN OFFICE • 202 West Superior Street
MILLER HILL SUPER ONE OFFICE • 5401 Burning Tree Road



Park Point Community Club Minutes 10-15-09

Pres. Dave Poulin opened the meeting at Lafayette Center, 7pm.

Diane Gould noted as a correction to the minutes that the edible garden committee did not get the grant they applied for. Alan Dartanyan moved to accept the minutes as corrected.

Chuck Flaig gave the treasurers report which was approved.

Dennis Hoelscher, as a recent renter of the Lafayette facility, and for the record, gave a glowing report of the condition of the rooms and kitchen as well as the ease in all aspects of making arrangements, setting up a rental with Barb Flaig.

Officer Tinsley gave his detailed police report of PP and answered questions regarding boom boxes, beach parties, etc. with his usual aplomb.

Alan Dartanyan noted that the release for the next Breeze would be a bit earlier. (Deer season is near!) He also explained that volunteers deliver the newsletter when they can and have time.

A discussion on the need for public toilets at Lafayette followed, including drawings proposed and sent to the city,

the stalling of the city on the project and possible Lake Superior Grants. Sharla Gardner, present at the meeting, offered to carry the ball to the City Council for action.

City Counsel candidates Beth Olson, Becky Hall, Dan Hartland and Jim Stauber came to present their stands on various city issues and field important questions fired from concerned Park Pointers. One of the concerns has been the fire department's one man on PP. A suggestion included a volunteer addition to the city's regular staff.

After the candidates' presentation, the meeting continued with a motion made and seconded by the Dartanyans to give \$1000 for the building of a shed for tools storage needed by the edible garden group. Discussion followed noting that the snowblower and fuel also could be included there. President Dave will approach the city to put up a shed. All were in favor.

Paul Kellner next gave a description of his apartment plans on the corner of Minnesota Ave. and 16th Ave. S. He has also bought up the property in back of the fence to be torn down and cleaned up. His report was made to offset speculation on what might be there. Many questions and concerns followed.

The last item was a note about the Art Fair budget, which will include "zaplacation", a digital application process standardizing the way the artists apply.

The meeting came to a close at 9:25.

Submitted by volunteer Julie Calligure

. . . Gift Card . . .

Treat Yourself or Someone You Know

60-minute Massage

\$45

Linda Nyquist, Licensed Massage Therapist

1229 Minnesota Ave. 218-464-0676

3 visits, new clients, Prepay or On Demand

SECURE STORAGE ON THE POINT!

8'x8'x40'

2560 CUBIC FEET OF STORAGE



Located on 13th and
the Bay at the S curve.

As low as \$100/month
Your lock. Your key.

Boaters...Pointers...

Weather proof secure shipping
container storage conveniently
located here on Park Point.

Quarterly, annual and semi-annual
leases available.

Bayside Boatworks @ 723-1280

Skating Rink Update

The same small group of volunteers as last year will again work to establish and maintain a modest size skating rink this season. We plan to get an earlier start than last year but we must wait until Mother Nature provides good conditions (think lower 20's and below!). There are no current plans to open or staff the warming house at this time but input is encouraged so please bring any thoughts or ideas to the November meeting. I can be contacted at 729-8925 or at pointer12@q.com if you would like to comment or volunteer.

Dave Lavamaki



website design & maintenance

Creating customized personal and professional websites
- call for details and pricing -

computer support

Need help setting up your computer,
solving e-mail problems,
or just want a personal tutor?
Give me a call - no question is a dumb question!
\$20 / hr + mileage

Ryan Novitzki
office: (218) 525-1401
cell: (218) 341-4948

www.vitzki.com
ryannovitzki@yahoo.com

professional . . .

create lasting memories

affordable . . .



www.duluthwvp.com

*Offering video recording and editing of your
event and editing of
previously-recorded
video footage.*

Ryan Novitzki
office: (218) 525-1401
cell: (218) 341-4948

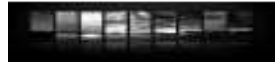
GIVE YOURSELF THE GIFT OF HEALTH

PARK POINT HEALTH EXPO

Join us for the First Annual
Park Point Health Expo

- Optimal Health through Nutritional Awareness
- Mind/Body Relaxation With Sound Resonance
- Energy Balancing with Acupuncture
- Kundalini Yoga
- 3 Hours of Lectures Demos & Food

Saturday
November 21, 2009
9AM – 12PM



PARK POINT
Lafayette Community
Clubhouse

3026 Minnesota Ave.

Phone: 218-260-6913

nutritionalbalancemn@gmail.com

\$3 Donation

Turkey bingo at Bayshore

We are having a Turkey bingo on Sunday November 15th at 1:30 at Bayshore and the cost is \$3.00 for 10 games of bingo and cash games in between.

Stacie Oakland

Activity Director at Bayshore Health Center

Holiday Spirit in the Lights

1999 was the first year I decided to open my Holiday Spirit in the Light's display for viewers to walk through. That year I made homemade cookies and hot chocolate for the visitors and placed them in the unheated front area of the "Garden House" so folks could step in out of the cold if they chose to and enjoy the 8000 lights that twinkled throughout the yard.

The next year tins of Danish sugar cookies replaced the homemade cookies. Hot Apple Cider along with hot chocolate were the warm drinks offered. The entire Garden House was opened that year and the heat was turned on.

By year four it became clear that "keeping it simple" might be a better idea and every year since sugar cookies and apple cider have become my standard offering.

Each year more lights have been added (now over 100,000) and more light viewers have made visits to Park Point a holiday tradition. Last year approximately 6,000 cups of apple cider were consumed.

My Grandson Zach Hales and I would like to thank the Community Club for the \$200 donation, which helps our ability to supply cookies and cider to holiday visitors again this year.

Thanks Pointers for your support of my Holiday Spirit in the Lights Display.

Sincerely, Marcia Hales, 3739 Lake Ave. South

Editor's Corner

After such a lovely September, the miserable October we just had was kind of hard to take. Cold temperatures, wind and rain, even a couple dustings of snow. It it's going to feel like November, it might as well be November. And now it is.

Getting a jump on the season, the same group of volunteers who flooded and maintained the skating rink at Lafayette last winter stand ready to do it again. No plans to open the warming house yet, but if someone is interested in doing it, it can be arranged. Even if it's just for a one day event, or a few weekends, or during the Holiday break, which is when the rink sees the most use. Weather permitting, of course.

I attended the Edible garden Club's potluck in October, and saw that they had a "wish list" that included a shed at Lafayette. A shed has also been suggested by the Community Club, primarily as a place to store our snowblower and fuel. So a motion was made and passed at the October PPCC meeting to spend up to \$1000 on a shed that could be used by both groups. A second vote is required before spending that amount of money, and a project proposal must be approved by the city as well, but with luck, a shed could be up on the Lafayette grounds before winter.

A good trend seems to be developing with developers here on Park Point. Prior to beginning a project, they are coming to the Community Club and informing us of their plans. It happened again at the October meeting, with the proposed re-zoning of the lots at 16th and Minnesota. It doesn't guarantee our support, or a good project, but I do appreciate the openness.

Nancy English Memorial 5k

On August 8th, 2008, Park Point lost one of its' own. Dr. Nancy English died unexpectedly of natural causes in her home. She was a true "Park Pointer" and loved running up and down the Point every morning. In honor of this, the second annual Dr. Nancy English memorial race will be held on Park Point on November 14th at 10:00. The race is a certified 5K run/walk and will start and end at the Sky Harbor Airport. Strollers and wheel chairs are permitted on the course and are asked to line up near the back. We love dogs, but they are asked to please stay at home during the event. There will also be a kid's 1/2 mile fun run as well beginning at 9:30 am near the hangar. We will have a water stop table at the turn around point around 39th Avenue. Day of registration will be from 8:30-9:30 and packet pick up will also be available from 3-8 pm on Friday the 13th at the Edge. This year the road involving the race course will be closed from 9:30-11:15 am or so. We apologize for the extra congestion on the point during the time the participants arrive and leave. We apologize for any inconvenience this may cause you, there will be no parking on either side of the road during the event. Nancy English was a wife, mother, daughter, sister, friend, mentor, social worker and a physician. Nancy truly loved helping others reach their goals. In memory of Nancy's contributions as a mentor, all of the race proceeds go to a scholarship for women going back to school later in life to achieve her dreams. Last year we were able to put \$15,000 into the scholarship fund. Nancy loved to run for the pure joy of it, not just to win. To further honor her love for exercise, prizes will be given not only to the top three finishers, but also several finishers further back in the pack. In addition, the race food and door prizes are a reflection of Nancy's favorites! The night of the race, everyone is invited to a new event at Carmody where there will be a special Nancy English alcoholic beverage offered. If you would like to join us in honoring this wonderful person, go to:

www.nancyenglishmemorial5k.com to register to participate, volunteer, or donate to the scholarship fund. If you have any questions or concerns, please contact Eve Stein, race director at evestein@gmail.com or (218)390-3185. Hope to see you there!

The Nancy English Race Committee!

BRIDGED

A Collaboration of Recipes from the Park Point Community is still available and would make a good Christmas gift. There are only about 40 left and when they are gone we will not reprint. Cookbooks can be purchased for \$10.00 by calling Diane Gould at 727-4067

The Breeze

Park Point Community Club
P.O. Box 16326
Duluth, MN 55816-0326



Park Point Resident

Numbers you can use

Got (non-emergency) issues you'd like to discuss, but don't know whom to call? Here's some numbers you can use: Parks Maintenance Division: 730-4491 (after hours 730-4150)
Fire station #5 (Park Point): 723-3215 Community Police Officer Mike Tinsley: 390-2863
City Councilor Sharla Gardner: 724-4701 sharla.gardner@gmail.com

COME HOME TO BAYSHORE.

Providing skilled nursing care, rehabilitation, memory care,
a Young Adult Unit and long-term care to the community.

{ Located next to Superior Bay on Park Point. }

To arrange a tour of Bayshore Health Center
call Mary Sinner at 740-4022.


Bayshore
A Commitment to Care

1601 St. Louis Avenue, Duluth, MN 55802
Bayshore is a member of the Ecumen Family.

