



2006 Membership form enclosed!

# The Breeze

Of  
Park Point  
February 2006  
Vol.35 issue 2

## Calendar

**Park Point Community  
Club Meeting  
February 16, 7PM  
Lafayette Square**

**Buoys and Gulls Club  
Meeting  
March 7, 1 PM  
At Lafayette  
Bingo every Thursday  
11:00 AM  
Bring your lunch  
Coffee is served**

**Legislative District 7B  
Precinct Caucuses  
March 7<sup>th</sup>  
7-9pm  
Call your party HQ for  
locations**

## New Dune Bridge Proposed



The mission of the Breeze is to serve the community by:

- 1) Publishing the minutes and financial statements of the Park Point Community Club
- 2) Informing the community of upcoming meetings, events, happenings and projects
- 3) Providing a forum for Park Point residents to air their concerns
- 4) Sharing the history, stories and anecdotes that make Park Point a unique place to live

The Duluth Rotary Club, in conjunction with the Park Point Community Club, has proposed building a new wooden dune bridge to the beach at the recreation area. The above aerial photo, taken during the Art Fair, shows both the location and the need for such a bridge. Located at the edge of the parking lot and at the end of the walkway along the softball field, this is already a popular path for beach goers. The constant foot traffic has worn away the low vegetation, and the wind then blows the sand out into the picnic area and onto the walkway. The dune bridge, coupled with subsequent plantings, would allow the vegetation to return, halting or at least slowing the erosion. Though the City has raised some concerns as to its proximity to the lifeguarded beach, and how it would be signed, they seem generally supportive. The Rotary Club has partnered with the PPCC in the building of several dune bridges, and their effect over the past few years has been dramatic.

# The Breeze

Editor: Alan Dartanyan  
726-0110

## Submissions

The deadline is March 3rd for the March 2006 issue. Please send submissions to Alan Dartanyan at [breezeditor@msn.com](mailto:breezeditor@msn.com) by e-mail or deliver to 1540 Minnesota Ave.

## Park Point Community Club Officers:

President: Dick Gould  
3003 Minnesota Ave  
727-4067

Vice President: Dave Poulin  
3101 S. Lake Ave.  
722-1511

Secretary: open

Treasurer: Chuck Flaig  
1511 Minnesota Ave.  
727-2814

## Committees

ART FAIR  
open

CITY COUNCIL LIAISON  
Cliff Tchida, 722-4966

ENVIRONMENTAL  
Kinnan Stauber, 722-6255

HOSPITALITY  
Diane Gould, 727-4067

LAFAYETTE SQUARE  
RENTALS  
Barb Greene 727-2814

S-CURVE SIGN  
Dave Johnson, 722-9764

SUNSHINE  
open  
Park Point Community Club  
P.O. Box 16326  
Duluth, MN 55816-0326  
www.  
parkpointcommunityclub.org

## From the President

The PPCC needs some things that are very important. A new President and Secretary to start with. Nominations are open and I am the chair of the nominating committee because no one else would offer to take on the job. If you would like to be on the list of candidates, please call or e-mail Dave Poulin ASAP. I will be out of town for the February meeting. We also need a CPA to review our books and do the reporting to the State and Feds. The by-laws should be reviewed by a committee and all committees should be reviewed as well.

In short the Club needs an overhaul, I would be glad to help anyone who would like to take on the job of Pres. for the coming term.

Things kind of slow this time of year? Try building a few bird houses or ordering some trees to plant in April. It will make you feel good to give a little back to Mother Nature.

See you all in March,  
Dick

## \$8000 from cookbooks? Who'da Think it?

PPCC Treasurer Chuck Flaig just gave me the figures for sales of the Park Point Cookbook. This is what it looks like:

### Ordinary Income/expense

#### Income:

**Contributions income (cookbooks): \$15,328.00**

#### Expenses:

<b>Postage and delivery:</b>	<b>\$ 205.70</b>
<b>Printing and Reproduction:</b>	<b><u>\$ 6,245.00</u></b>
<b>Total Expenses</b>	<b>\$ 6,450.70</b>

**Net income: \$ 8,877.30!**

Not only has the cookbook succeeded far beyond expectations, it should continue to generate income for the club for years to come. Many thanks to Mary Wade, Diane Gould, and everyone who contributed to this project.

## Correction!

**There was an error in last month's notice of advertising rates for the Breeze. The correct rates are:**

<b>Full Page:</b>	<b>\$100/Mo.</b>	<b>\$780/Yr.</b>
<b>1/2 Page:</b>	<b>\$50/Mo.</b>	<b>\$420/Yr.</b>
<b>1/4 Page:</b>	<b>\$25/Mo.</b>	<b>\$240/Yr.</b>
<b>Bus. Card:</b>	<b>\$8.50/Mo.</b>	<b>\$80/Yr.</b>

**OUR LADY OF MERCY  
CATHOLIC CHURCH**

2004 Minnesota Ave

SUNDAY MASSES 9 AM  
RECONCILIATION 8:30 AM  
Coffee & Donuts 1st Sunday of the month

Classes will begin on Feb. 16, 6:30 PM for those interested in becoming Catholics or those that wish to renew their studies in the Catholic faith. Please call Parish Office for more info.

**WE WELCOME YOU ALL**  
Children are always welcome

PASTOR: MSGR. PATRICK MCDOWELL  
DEACONS: ROGER BIRKLAND  
TED WINDUS

**St. Andrews By The Lake  
Episcopal Church**

2802 Minnesota Avenue  
standrewsbtl.org 727-1262

**February 12** -- Worship led by the Senior High Youth Group  
**February 16** -- Men's Group (6:45 a.m. at Jitters)  
**February 16** -- Third Thursday Group (11:30 at Saigon Cafe)  
**February 25** -- Jr. High Youth Group (6-8 p.m. Bowling at Incline)  
**March 1** -- Ash Wednesday/Holy Communion and Imposition of Ashes 7 p.m.  
**March 2** -- Men's Group (6:45 a.m. at Jitters)  
**March 4** -- Women's Group (9:30 a.m. Beginning Benedictine Spirituality)  
**March 8** - Printmaking with Tom Rauschenfels (Soup Suppers in Lent - 5:45 p.m.)  
**March 15** -- Soup Supper and Printmaking (5:45 p.m.)  
**March 16** -- Men's Group (6:45 a.m.) and Third Thursday (11:30 a.m.)  
**March 22, 29, April 5** -- Soup Suppers and Printmaking (continue)  
**April 9** -- WOMEN'S RETREAT and EGGCEPTIONAL AFTERNOON (April 9th, 1-5 p.m.) (Activities include: video/discussion, prayer room, tole painting, making Easter candies and treats) Tickets -- \$10 for meals and supplies. Sign up needed or call the church)

# *BaySide Market*

**1901 Minnesota Ave 727-7635**

**Meat, Cheese and Veggie Trays**

**Great Deli and Sandwiches**

**Home Made Sausages**  
**Polish, Italian, Potato, Brats**  
**Onion & Garlic, Cheese Franks**  
**Breakfast Sausage and Jalapeno Brats**

## Winter Hours

**Monday – Friday: 7 AM - 8 PM**  
**Saturday & Sunday: 8 AM – 7 PM**

## Park Point Community Club Meeting Minutes, January 19, 2006

Eager, happy chatter delayed the beginning of the meeting until 7:07. In the first order of business, minutes from the November meeting were accepted; the Community Club did not meet in December.

### Committee Reports

**Treasurer:** Chuck Flaig reported that the Club treasury, at that moment, stood at \$43,255.58, representing a gain of \$15,793.28 for the community club from January 2005 to January 2006. This led to a discussion on the financial input from the Art Fair and from last year's resounding sales of the cookbook. A grand total on cookbook sales and production costs will be given in February; there are 70 cookbooks left.

**Lafayette Rentals:** Chuck also relayed how Barb Greene is faring with building rentals. Winter has been quiet, but reservations for summer wedding receptions are picking up. Dick Gould remarked he would still like to paint the main room of Lafayette before rental season took off. The assembled club paused to scowl with distaste at their surroundings.

**City Liaison:** Cliff Tchida urged residents to pay attention to the impact on city planning that Comprehensive Plans can have. He noted recent court cases giving clout to those plans; they might help in fights against outlandish variance requests. The topic of variances and the city would burble to the surface several times through the meeting.

**Breeze:** Neighborhood newspaper tycoon Alan Dartanyan reported that ad revenues for the Breeze are up, and he's even getting inquiries about ad space for sale. He tactfully noted the importance of meeting print deadlines; few in the club saw his reproachful stare at the club secretary.

**Police:** Officer Mike Tinsley distributed copies of his monthly statistics report; this one included a summary for 2005. Traffic stops have increased substantially. This year there were 218 traffic stops resulting in 59 tickets. Other lowlights: There were 7 burglaries and 20 thefts reported on the Point; some reports proved unfounded. No murders... yet.

**Art Fair:** Event Director Carla Tamburro has established March 12 as the date artists will be chosen for the 2006 fair. There will be more artists at this year's fair. She has chosen a jury, and artist submissions and applications have been arriving at the Community Club post office box. They continue to work on an updated version of the handout map given at the entrance to the fair.

**City Comprehensive Plan:** Lloyd Vienneau spoke on progress the city has been making through the neighborhood meeting process. All the meetings are over; the information will be put into a format and get voted on. He then announced that the existing Park Point Comprehensive Plan, barely two years old and generated for a hefty price, will NOT be rolled into the City's new plan. This recent decision was made by the new contractor, who apparently presumes we're nitwits. With regard to street ends along the Point, the interested parties who attended voted to vacate all the street ends. Another discussion on city planning ensued. **Motion:** The Club President shall send a letter to Heather Rand and Chuck Froseth of the City of Duluth. This letter shall emphatically disagree with the contractor's position and support the plan just completed by U.R.S. Motion passed.

**President's Report:** Dick Gould had a number of issues at the ready. First, the grant from St. Louis County (\$10,000) for improvements at the S-curve was approved. Dick thought the money might be used to corral a higher-dollar grant. This would mean waiting on any major improvements at the site for a while.... The next site for a walkway has been chosen. The bridge will start between the two pavilions in the public park, terminate out on the beach, and have small observation platforms at each end. It will be similar to the last boardwalk in the Barrens, which was also built by the Rotary with Community Club input. This walkway will draw all the foot traffic to and from the biggest parking lots in the park. It will be handicapped-accessible as much as possible, and will take a tremendous beating off the beach grass.... Due to frequent complaints about low-flying aircraft from Sky Harbor, Dick contacted "everyone from the FAA to Homeland Security." As a result, the FAA has opened an investigation into Sky Harbor... This year the hockey rink, constructed with money from a city grant a few years ago, will not be flooded or

**(Minutes, continued)**

maintained by the City. The City took away the missing hockey nets; kids now use garbage cans. On the other hand, sidewalks around Lafayette have been cleared quickly and well after snowstorms.... Dick supports a plan to get a Certified Public Accountant for the Club.... At the rate they are climbing, taxes are due to double in the next 7 years. A committee is forming to see if this issue has any remedy beyond revolt.... Tree planting season is coming; orders for trees must be assembled soon.... Dick initiated a discussion about the canceled check originally sent to the City's Duluth Legacy Foundation. The Foundation might not have any money; replacing the check they lost should be done with caution. **Motion:** To replace the check written to the Legacy Fund. Motion failed by a close vote. **Motion:** President Gould shall research the Legacy Fund and report to the Club before replacing the check. Motion passed.... The City informed Dick they wouldn't provide outdoor garbage cans in the parks from October to April. **General Discussion:** Club members returned to the subject of variances. One resident thanked the Club for taking a stand against variances, specifically concerning the duplex planned in the 3100 block, on the bay. City Planning Commission had denied variances, but the City Council granted the appeal and the variances. More are expected. There is very little time elapsed between a neighborhood notice about a variance and the variance showing up on the Planning Commission agenda.... Continuing with a favorite Club topic, the City of Duluth is following a devious plan to get Minnesota Avenue re-built at the expense of homeowners and property-taxpayers. This is different than having Minnesota Avenue re-surfaced, which is financed by city, county and state money.... Dick reminded the Club that elections are coming up in May, and a nominating committee needed to be established. Falling into Dick's sly trap, Chuck Flaig agreed to keep on as treasurer. Flushed from his blanket-and-cushion fort, the club secretary sprinted for the door; his return is highly unlikely.... Discussions about interest in a cross-country ski trail by the airport; a pilot has grooming equipment, and offered his services. Possible damage to the Scientific and Natural Area would prevent this. **Motion:** That the Club set aside \$1000 for the purchase of trees, to continue the spring re-planting tradition. Motion passed.... Membership Month is coming in February.... The Living Green conference will be held on Saturday, February 11, featuring guest speaker Al Franken. The Club has had a table display in the past; the conference is a great opportunity to put forward Club environmental work. Dave Johnson, described by neighbors as a sullen, brooding time bomb, will coordinate booth volunteers. **Motion:** The Club shall spend \$25 for the booth entry fee for the Living Green Conference. Motion passed.... The meeting ended at 8:35 with lusty shouts of "Huzzah! Huzzah!"

Remorsefully Subsandwiched,

Dave Johnson (I had the pen this month)

**Long Range Planning committee Report  
Lloyd Vienneau**

The Club Long Range Planning Committee has been meeting over the past several months to offer feedback to the citywide Comprehensive Planning group and to provide some detail to the Park Point Comprehensive Plan that was developed in 2003. No meeting ever exceeded 14 people, with some coming to most meetings and several coming to speak to a particular subject. We also received several comments by phone and e-mail. As a result of these meetings we will present to the Club for a vote, several options that can be discussed at the club meeting and voted upon so some specifics can be added to the plan for inclusion into the city wide plan.

The meetings had considerable discussion and detail. Here we are only providing the major theme. These four areas were selected as many people wanted more clarification, disagreed with or wanted the plan modified.

(continued on next page)

### **1. Bike Lanes**

In our Comprehensive Plan it recommends we place bike lanes between the parking space at the curb and the traveled way for cars (both sides), all lanes being somewhat narrow. As a result of our meetings the following two options are suggested:

- a. Leave the bike lane as we have it now with one side being used for bike traffic in both directions. This concept bothers some people but it seems better than having the bike lane next to parked cars.
- b. Leave the bike lane plan as it is published in the Comprehensive Plan, with bike lanes located between the parking lanes and the traffic lanes, both sides of the street.

### **2. Roadway 7<sup>th</sup> – 12<sup>th</sup>**

In our Comprehensive plan it is recommended that we leave the roadway from the bridge to the end the same as it is now. As a result of our meetings the following options are suggested:

- a. Leave the roadway as it is, with the same widths as we have now and the same parking schedule for the winter and summer.
- b. Make the roadway from the bridge to 13<sup>th</sup> street generally follow Minnesota Avenue, with the turn much closer to the bridge. The homes on Lake Avenue would be serviced by cul-de-sacs from Minnesota Avenue. This concept was in the 1973 Sketch Plan.

### **3. Zoning**

The zoning of Park Point has been pretty stable for years, although suggestions have been made for change on several occasions. The plan we submitted two years ago at the beginning of this planning process is still what is recommended. It does call for the city to create a “Parks” zoning for the various open spaces and parks, the specific definition of these areas has not been defined, although the city is doing this. We also recommended the removal of the heavy industrial designation (M1) found at about 10<sup>th</sup> to a more residential designation. As a result of our meetings the recommendation is to follow the earlier recommendation as it was submitted.

### **4. Street Ends**

The street ends discussion resulted in three positions. So, therefore the Club will be given the opportunity of voting for having a position of:

- a. Maintaining the position we presently have, that of opposing the complete vacation of any side streets and opposing most variances that include the streets. We do support limited vacations to allow property owners full title to their property in the case of a home or garage being located on public land. This allows adjacent property owners some control over access.
- b. Not taking a position on the issue of streets. This would place the issue of street end vacation and variances strictly between the property owners on the street end and the City Council.
- c. Take the position of maintaining a twenty-foot strip right of way down the center of every street. This would not allow adjacent property owners any control over the use of the right of way.

*Membership Drive*  
*Park Point Community Club*  
*2006*

The Park Point Community Club is conducting its annual membership drive. The club gives the community a common voice on common issues, aids youth programs, manages the Annual Park Point Art Fair and Garage Sale, has a strong environmental committee and publishes *The Breeze* monthly. Family or individual memberships are \$3 a year and allow one vote at meetings. If more than one person wishes to have a vote please buy additional memberships. Membership is limited to Park Point residents 18 years old or older. Memberships can be mailed in the enclosed addressed envelope or slipped through the slot in the front door at Dave Poulin's home at 3101 Lake Avenue South.

*Thanks in Advance*  
*The Officers and Members of the Park Point Community Club*

---

***Membership Form***

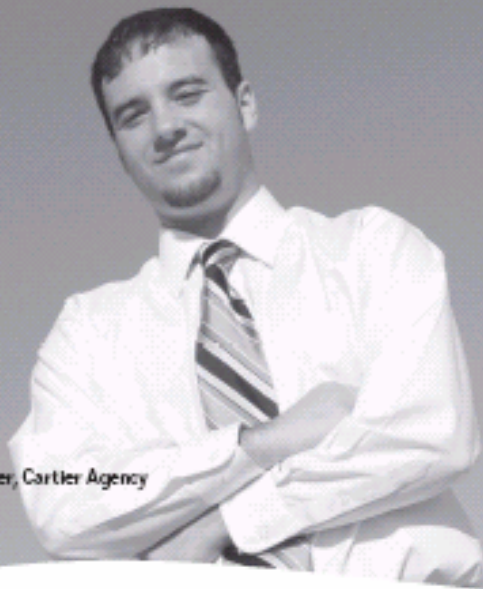
**Name(s)** \_\_\_\_\_

**Address** \_\_\_\_\_

**E-mail address** \_\_\_\_\_

**Number of memberships** \_\_\_\_\_ **X \$3.00 =** \_\_\_\_\_

**Please Mail Check to:**  
**Park Point Community Club**  
**P.O. Box 16326**  
**Duluth, MN 55816-0326**



Cory Cartier, Cartier Agency

# Let's trade secrets.

As a new Park Point homeowner, I'm looking forward to getting to know my neighbors. If you want to know about home, auto or any other personal insurance products, please give me a call.

And while the sand is great, if you have any tips on how to keep it outside—I'd love to hear them.

## CARTIER AGENCY • INC.

Inserting Your Interests.

2631 WEST SUPERIOR STREET DULUTH 218.727.5992 WWW.CADULUTH.COM



## Insurance?

- It's about people, not things.
- It's about security.
- It's about confidence.
- It's about relationships.
- It's about trust.
- It's about you!

As a local independent agent, we can design an insurance program that's just right for you and your family. Give the people you love Safe.Sound.Secure.\* protection from Auto-Owners Insurance Company.

***Auto-Owners Insurance***



# TPI

TWIN PORTS INSURANCE

KENWOOD AGENCY

1309 KENWOOD AVENUE • DULUTH, MN 55811

Jeff McCaffrey CPCU  
218- 728-3600

**Private EBAY Lessons**  
**For selling and buying on the Internet. 1-on-1 attention from start-up to follow-through and everything in between!**  
**Call Susan Hammond**  
**(218)722-9688 sdh1950@aol.com**



## **A Pine Forest Ski Trail?**

At the January Community Club meeting and individual came forward with an offer: If the club was interested, he would be willing to track a cross country ski trail along the path through the pine forest beyond the airport. Several questions were raised as to whether the State, which owns the land, and the city, which manages it, would allow it, and under what conditions. But the first questions that occurred to me were: a) was it feasible, and b), would Park Pointers want it done?

It had been some time since I was down there, especially in the Winter, so I grabbed my beater skis (and the dog) and headed down there. This is what I found.

First of all, as soon as I got through the gate it was obvious the trail is being used. There were some old ski tracks here and there, but mostly it was foot traffic, both 2 and 4 legged. Despite thin snow conditions I was able to ski along the road down to the wooden walkway, where the trail goes up into the forest. I had a little trouble transitioning there, as boardwalks aren't meant for skis, but once I got onto the trail I was able ski pretty well. It was packed from foot traffic, and there weren't any ski tracks I could stay in, and part of the trail is pretty narrow, but I was able to ski all the way to the Superior entry. There would be a few challenges, and in some places no doubt the tracks would be walked on, but yes, it could be done.

Next question: do we want it done? I can see a couple nice things about having a good ski trail there. For one thing it would just have a single track for classical skiing, and as a classical skier, I find I'm often pushed to the margins on city trails groomed for skate skiing. And then there's the dog thing. City trails don't allow dogs, yet as this is a popular dog walking area, you could probably get away with skiing with Fido.

I can also see some areas of concern. Right now, the majority of users are walking. Perhaps some of them would switch to skis if it was tracked, but would it lead to conflicts, especially where the trail is narrow? And then the tracking itself would require the use of a snow mobile. Would allowing a snow machine in there open a Pandora's box, making other's think they could snowmobile there too? And would the use of a snow machine damage the vegetation, and cause erosion especially in marginal areas? Would they even be allowed?

So I'm throwing the question out to the wider Park Point Community. Is this something you care about? Do you have an opinion, pro or con? Any ideas? You can e-mail them to me at [breezeditor@msn.com](mailto:breezeditor@msn.com), or drop them by the house at 1540 Minnesota. I can print your opinion if you like, or if you'd rather I didn't, I can simply tabulate the numbers either way. Give it some thought.  
Alan Dartanyan

## **12<sup>th</sup> Street Beach Plans**

As noted in the January minutes, a \$10,000 grant has been obtained from the county for improvements to the 12th St. Beach area. The PPCC has voted to authorize an additional \$10,000 from general funds to add to this project. It has been suggested that these monies could be used to leverage an even larger grant to finance a complete makeover of the area. This, however, would mean a considerable delay before any work was done, and may result in something that is not in the best interest of residents. The PPCC's point man on the project, Dave Johnson, has come up with a draft plan for some improvements to the area that could be done now, with the money already in hand. Though Dave stresses that is only a draft, and it's open to much tinkering, I believe it bears looking at. However, it's a bit too large to print in the Breeze. So I have attempted, in my technologically inept way, to post the plan to the Community Club's web site. I know that this leaves out those without Internet access, but if you're interested, I'm sure you can find a way. Go to [www.parkpointcommunityclub.org](http://www.parkpointcommunityclub.org), and click on 12<sup>th</sup> Street beach plan. It should be there.....I think it's there.....maybe it's there...

### Editor's Corner

Boy, when it rains, it pours. At 12 pages, this is the largest issue of the Breeze I've put out. Part of this is due to including a 2006 membership form, but even without that it would have had to be expanded, as I received an unusually large number of reports, letters and updates. And I love it. When people show enough interest to submit items for printing, it shows me that the Breeze does fulfill a need here in the community, and I'm not just sitting here at the computer for my own entertainment. Keep 'em coming!

Editor,

As we ponder what changes should be made to Franklin Park, we must take into consideration the desires of the people who use the park, the natural movement of sand erosion, funding or use of other resources and what Pointers want of the park. After several years of polling people at the beach it is obvious they want a beach much as we have now; in watching the sand erosion and movement over many years, the management of the sand is best done about as we do it now, even if it seems messy. We must replace the wall around the back of the parking lot (maybe adding an observation deck), keeping the demonstration dune as our centerpiece and adding a toilet uses up any funds currently available for the items we need the most. To use community club money for a area park that Pointers seldom use except to sit and watch the waves, when we need a roof and paint on our community club or expanded electrical service for our art fair, it does not seem to be best use of our hard earned money (if we are going to donate it to city structures) to spend it on Franklin Park, lakeside. We don't want the park larger, it well serves the need of providing us a place to watch the lake from our cars throughout the year, it does a good job of reducing car traffic to the end of the Point in the summer and it provides excellent water access for thousands annually.

Lloyd Vienneau, 2401 Minn. Ave.

### Letters

Dear Editor,

A special thanks to the Duluth Rowing club for allowing our employees to park in their lot during our construction. Also, thanks to all our neighbors. I sincerely appreciate your tolerance and patience with our parking situation at this time.

Richard B. Ludwig  
Administrator  
Franciscan Health Center  
3910 Minnesota Avenue  
Duluth, MN 55802  
218-727-8933 Fax 218-740-4410

Dear Friends,

The Social Concerns Committee of Center City Catholic would like to thank you from the bottom of our hearts for your generosity and help in contributing to our Annual Christmas dinner at CHUM Drop-in Center

With your help we able to feed about 160 men, women and children a hot meal of lasagna, garlic bread, coleslaw fruit and cookies. We were also able to provide our friends with a gift of a T-shirt, socks gloves, hat sewing kit, toothbrush and paste, soap and shampoo. For the children we had hats, mittens coloring books and puzzles.

Most of us would consider these things our normal due, but there are many in our community who do not even have these basic necessities. It is the simplest of things that we are hoping to provide at Christmas and we are grateful for your support in this endeavor.

Sincerely,

Social Concerns Committee  
Maggie McGillis  
Jean Kilgour

## More Letters...

### Ian Harvey's Row

On February 26th at 5:00 pm there will be a showing of the Belfast Ireland rower Ian Harvey's row from Duluth to Whitefish Point, a four hundred mile row and a first to do it in a rowing shell. Ian had previously rowed across Lake Victoria, which was 200 miles. The reason for these high profile rows are to raise money for the children's charities Fields of Life (.com) which is supports children's needs in Uganda and Children in Need, a Northern Ireland cause.

Ian, a semi-retired BBC senior producer has raised in Ireland over \$85,000 so far from his row on Lake Superior. A BBC film crew followed him down the lake for the entire row and produced an excellent 50-minute documentary, which was used for a daylong telethon on national television in Ireland last October. Because of copyright issues we will be calling it a private showing and all are invited. The Duluth Rowing Club will be showing this film at the Marine Museum in Canal Park Sunday, February 26 at 5:00 PM. A donation of \$5:00 can be given at the door if desired.

Any questions call Dan O'Neill @ 733-0575

### Speak Now or Forever Hold Your Peace?

Park Point residents who follow local news closely may find their eyes glazing over at the mention of Duluth's long discussed Comprehensive Plan, and thus find little interest in the fact that the document is nearing completion. Underestimating its potential impact would be a mistake, however, as the final plan will form the basis for local zoning law, commercial & residential development, green space conservation and public/private land use decisions for the next two decades or more. A recent Mendota Heights, MN case underscored the importance of paying attention to such documents – in a nutshell: the court held that the principles and goals outlined in Comprehensive Plans trump future attempts at change through zoning restriction. Laws passed later that attempt to by-pass a municipality's plan are not considered valid.

In Duluth, a Comprehensive Plan Committee of some 27 members (not including this writer), headed by Heather Rand and supported professionally by Duluth Planning Director Bob Bruce and Project Director Brian Ross of Minneapolis firm CR Planning, inc., has been meeting for nearly two years. To date, governing principles have been established and approved by the City Council, and the final draft is nearing completion. Public meetings to present the draft and receive community input are scheduled for **Feb. 24<sup>th</sup>, 28<sup>th</sup>, and Mar. 8<sup>th</sup>**. I would strongly encourage interested residents to attend a meeting, contact one of the principals involved and/or, at the minimum, visit the website **[duluthplan.com](http://duluthplan.com)** to view details. Goals include presentation of the plan to the Planning Commission in June, with final submission to the City Council soon thereafter. The Council then has the option to accept, deny or "accept with provisions." Director Bruce has proposed that a total revamping of the city's antiquated zoning ordinance should be the essential next step.

The section of the document, which addresses Park Pt. specifically, is commonly referred to as the Park Point Urban Impact Study (a.k.a. "The URS Plan"), completed in the spring of 2003. That very comprehensive set of guidelines was the result of some nine months' worth of meetings and discussions between the URS Planning firm, City Planner Chuck Froeseth and well over 100 Park Point residents who made their concerns known at the time. The strength of the URS study lay in its high level of participation by residents. The Community Club and its Long Range Planning Committee, while active and hard-working participants in the process, were joined by many who rarely, if ever, attend community club meetings. Hence, the URS study represented a broad range of thinking among residents, rather than any single group or voice; attempts to narrow it by any group or committee should be considered suspect. That said, it may not represent *your* views or concerns; to have your voice heard, contact one of the following: Proj. Director Brian Ross – [bross@crplanning.com](mailto:bross@crplanning.com) (612-588-4904); Planning Dir Bob Bruce – [lbruce@ci.duluth.mn.us](mailto:lbruce@ci.duluth.mn.us); Heather Rand – [rand4duluth@aol.com](mailto:rand4duluth@aol.com).

Ellen Dunlap

# *The Breeze*

Park Point Community Club  
3026 Minnesota Ave  
Duluth, MN 55802



## **Park Point Resident**

### **Parks Maintenance Numbers**

If you see a problem such as overflowing trash cans or porta-potties, or any issue concerning our park facilities, you can contact the Parks Maintenance Division of the Public Works Department at 723-3425, Monday thru Friday from 7 AM to 3 PM. Weekends and after hours call 723-3333



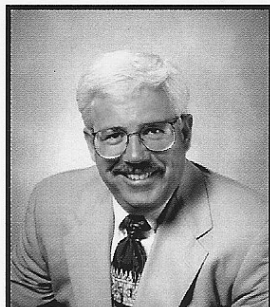
**Edina Realty** Inc.



## **Mark G. Bovee** REALTOR, GRI

*As a life long resident of Duluth and having had the privilege of living on Lake Superior for 30 years I understand the draw of living on the water. I have had the opportunity to work with sellers and buyers on the Point over the last 12 years. Please call me with your Real Estate Questions???*

Office: (218) 728-7706  
Home office: (218) 525-7230  
Email: mgbovee@computerpro.com  
Fax: (218) 728-7710  
Cell phone (218) 390-7230



Duluth Office  
1515 London Rd  
Duluth, MN 55812



A.G. EDWARDS.  
FULLY INVESTED IN OUR CLIENTS.

### **IS YOUR CURRENT BROKER JUST A DISTANT MEMORY?**

If your current broker has left town, left the brokerage business or simply doesn't stay in touch, maybe it's time to enjoy first-class personal service from A.G. Edwards.

Call for a free second opinion on one or more of your investments.



Lynden Medlin, AAMS  
Investment Broker  
4815 Burning Tree Road, Suite 200  
Duluth, MN 55811  
(218) 727-5186

2005 A.G. Edwards & Sons, Inc. • Member SIPC

02/27/05 09:11 AM 308-1305